



MODBURY MESSENGER



illustration - Caroline Barker

For the People of Modbury & Brownston

Volume 22, Issue 283 - October 2022



St Luke's
Hospice Plymouth



1982 - 2022

Saturday 29th October

Pig Racing

At 7.30pm in the Memorial Hall

Tickets £10 from Pickles or Jane Jones 01548 830413

A bar, great raffle prizes and an evening of great fun and laughter

Bring a picnic to share with friends and come dressed for the farmyard while helping to raise funds for St Luke's Hospice

Fitness studio & 24/7 Gym

BOMBERS
PHYSICAL TRAINING

Unit A
Pearse Gardens
Modbury
PL21 0FX

Over 100 5 star reviews

Contact us to book your 'No Sweat Intro'

www.bomerspt.co.uk gym@bomerspt.co.uk

CHRISTMAS STREET LIGHTS

SWITCH-ON NIGHT

November 25th 6pm, Church Street

Lantern parade

Christmas Royalty,

Father Christmas,

Pipe band,

singers/musicians and more

Come and enjoy the festive atmosphere



GEORGE H.W. ROSEVEAR
& COMPANY
A DIVISION OF HOLBROOK ASSOCIATES

ACCOUNTANCY, TAXATION AND
COMPANY SECRETARIAL SERVICES

01548 831427

3 MODBURY COURT, 32 CHURCH ST.,
MODBURY, DEVON, PL21 0QR
george@holbrookass.com

Tall Orders Landscaping

All aspects of gardening

*Hedge trimming / Tree work

*Grass cutting - Lawns to Paddocks

*Fencing / Turfing / Stump grinding

*Weed control / Lawn Scarifying

Logs Supplied

*Locally sourced hardwood

*Delivered in dumpy bags / nets

Tel . 01548 831139 / 07967258318



VEG PICKERS WANTED!

ORGANIC FARM AT BIGBURY

Mon-Thurs 8am-4.30pm

Fri 8am-3.30pm

Winter harvesting work,

September-April

Planting and weeding
in the summer months



Ring Cathy
01548 810079
07830 138133

MICHAEL HAGGER

Professional
Interior & Exterior Painter
& Decorator

*Friendly and reliable, trained to
City & Guilds Advanced Craft level
with 32 years experience*



Lankwells Farm
Burraton,
Ermington
Telephone:

01752 881438
or **07977445521**

Free estimates & References



South Hams
Wills & Probate

*Your local cost-effective
alternative to solicitors*

- Wills -
- Probate -
- Lasting Powers of Attorney -
- Inheritance Tax Planning -
- Trusts -

Call Vanessa (Chartered Accountant)
on 01548 858806
mail@southhamswills.co.uk
www.southhamswills.co.uk

Barnes Computer Services
bcs
Modbury

**Your one stop shop for all
your computing needs**

Do you need help with your
computer, mobile phone,
iPad or tablet?

Would you like to learn more?

Does your computer need
upgrading?

Contact us for professional
help at a reasonable price.

Chris 07722254064
Lynne 07806559465

bcsmodbury@gmail.com



Sarah Wyatt

Independent Civil Celebrant

Weddings, Namings, Vow Renewals,
Funerals – Celebration of Life

MAKING MEMORIES WITH BEAUTIFUL CEREMONIES

Tel: 07794662903 Email: circlecelebrantsarah@gmail.com

www.circlecelebrancy.co.uk



Coastal
Garden Services

NPTC Qualified Tree Surgery

RHS Qualified Landscaping & Horticulture

Fully Insured

Tel: Andy Walker on 07793 056898

MODBURY PARISH COUNCIL REPORT

Report of the Modbury Parish Council Meeting on Tuesday 6th September 2022, 7.15 pm at The Pavilion, QEII Recreation Field.



The Parish Council had a closed meeting with Baker Estates at 6.45pm.

Seven Parish Councillors were present and apologies were received from the remaining four councillors. Three members of the public were present along with both the District and County Councillors.

Open Forum: A member of the public raised the issue of P3, emphasising that P3 is a partnership between Devon Council, the Parish Council and the P3 volunteers. The Parish Council acts as the finance holder and provider of 3rd party insurance and work is carried out on behalf of Devon County Council. At a recent meeting involving some members of the council and P3 volunteers it became apparent to the volunteers that new requirements are being put on them and new equipment purchased.

The Parish Council discussed the issues and stated the equipment was bought to meet the insurance stipulations and public liability cover that applies to all volunteers who needed cover. These issues were mainly being caused by requirements of the Parish Council insurance company. The equipment was bought urgently to try and resolve the issues quickly. It was agreed to take the P3 issues back to committee to try and find a way forward.

Devon County Councillor: Rufus Gilbert stated that the Devon County Council finances are still deteriorating with more money being spent on children in care than was being saved in other areas. The Council will know in June whether an S141 notice will be served and Devon County Council dissolved.

District Councillor: Bernard Taylor stated the SHDC legal team are working on taking back the waste collection in house.

Matters Arising: The Food Bank in Kingsbridge do deliveries to people in Modbury - if anyone in Modbury is in need they should contact the Food Bank directly.

The Parish Council will look into providing a 'warm place' over winter and any other support that could be provided over the next few months to those in need because of recent price rises in energy.

There is a Modbury Charity for the 'Sick and Poor' that has given support to some families of children who attend Modbury School. If anyone is aware of people who may benefit please contact George Rosevear or Dr B Martin. SHDC have various grants that are available, please see SHDC web site for details or contact SHDC Councillor Bernard Taylor.

Planning

2542/22/LBC	Old Traine	Supporting
2456/22/TCA	Upper Paddock	Insufficient information to comment
1446/22/FUL	California Farm	Supporting (but consultation on Signage)
2722/22/LBC	Kingsland	No Comment

The Parish Council is to comment on developing a tourist accommodation register.

Finance Committee: The Parish Clerk was formally thanked for her work on the annual financial statement

Community Engagement Committee: After consultation, it has been decided to go with Parish Online for the new web site. A Social Media specialist will be used for 3hrs per month for 6 months to improve community engagement between the Parish Council and the community in Modbury.

Policy Committee: The draft Health and Safety Policy and Procedures were discussed, but as the main Councillor involved in the preparation of these was not present it was proposed to delay this to next month but to agree the risk assessments ormat.

Parish Council Insurance: The risk assessment format has been agreed. Equipment cannot be repaired by volunteers. Tools need to be checked by a competent person. It needs to be stressed that people are only covered by the insurance, if the risk assessments are followed. It was stated that the above requirements are not due to a change in insurance company.

Modbury Parish Councillor, John Harvey, has resigned from the council and Chair Peter Watts thanked him for his work on the council over many years.

Chris Barnes

Modbury Players Open Meeting for 'Windbag the Sailor - a modern pantomime'



We will take latecomers up until 15th October
circlecelebrantsarah@gmail.com

- Scenery
- Painting
- Make-up
- Lighting
- Sound
- Acting
- Singing
- Dancing
- Back Stage
- Front of House


If you are interested then please join us!

WILKINS
ESTABLISHED 1886
CHIMNEY SWEEP.

- TRADITIONAL SWEEPING SERVICE
- NESTS REMOVED
- CAGES, CAPS AND COWLS FITTED
- CCTV SURVEYS
- SWEEPING CERTIFICATES ISSUED
- PROFESSIONAL, CLEAN SERVICE
- FULLY INSURED
- POLICE CHECKED

01752 895949  

wilkinschimneysweep.co.uk/southhams 

MARTIN LEY
PLUMBING & HEATING

- Oil Installations, Servicing & Repairs
- Unvented Cylinders
- Bathrooms & Showers
- General Plumbing


Tel: Modbury 01548 830609
Mobile: 07811 934551

Unwind Hair
Bigbury
Ladies - Gents - Children

Unwind Hair would like to welcome our new, experienced stylist Kirsten.

Please call any time to book your appointment.

We look forward to seeing you.



www.unwindinbigbury.co.uk 01548 810 000
unwindinbigbury@mail.com 07786860440

Designed Space
Ltd

Architectural Drawings
and
Planning Applications

Contact Alayne Harris B.I.D.
0755 191 0874
info@designedspace.co.uk

Based in Modbury



SNICKERS
JUST PLAY!
BY ENGLAND FOOTBALL

Walking Football -over 50yrs
Modbury Recreation Ground
Every Thursday (weather permitting) 1-2pm and 3-4pm
Contact Steve 07871310987 Email: steve88804@outlook.com

ARE YOU PAYING TOO MUCH TAX ?
ARE YOUR ACCOUNTS AND TAX AFFAIRS UP TO DATE ?
ARE YOUR ACCOUNTING SERVICES COMPETITIVE ?

FOR A SERVICE SECOND TO NONE CONTACT

MARTIN E RANWELL, FCA
ELLIOTT & PARTNERS
ACCOUNTANTS AND TAX CONSULTANTS

KINGSWAY, 10 THE PRIORY,
MODBURY PL21 0TL
AND AT 6 MODBURY COURT, 32 CHURCH STREET
T. 01548 830432 M. 07763 526814
e-mail : martinranwell@googlemail.com

EXTENSIVE EXPERIENCE IN BOTH COMMERCE
AND THE PROFESSION
ALSO PROPERTY MANAGEMENT SERVICES

- Bathroom and kitchen fitting
- Floor and wall tiling
- Leaking toilets/radiators/taps etc
- Radiator replacement and additions
- Shower pumps
- Links with local builder/electrician for larger installations if required

Chapman & Sons Plumbing Service

Small jobs welcome
Reasonable rates
Free quotes
Telephone 07468 466380 now
for a speedy and efficient service.

GREENLANDS NURSERY
Higher Wzaller, Modbury, PL21 0SE

Selection of Shrubs, Vegetable & Bedding Plants, Perennials
Hanging Baskets
Jack's Magic Compost
Deliveries can be arranged

Local family run business excellent value
Tel: 01548 550491 or 07534 611587
Email brendagreenlandsmodbury@yahoo.com
We also have a good selection of marble based garden ornaments

MODBURY COMMUNITY APPLE DAY

Promising Apple Harvest Despite the Long Hot Summer

Compared to last year, the apple harvest in our Millennium Meadow community orchard is looking more abundant this year. We are hopeful that welcome September rains arrived in time to help swell the fruit and thus provide us with a productive morning's apple pressing and bottling at the **Memorial Hall car park on Saturday 22nd October.**

Devon has a long history of apple and cider orchards and we are keen to maintain not only traditional varieties, but also apple traditions such as the Wassail in January and the apple harvesting and pressing in October. There now over twenty-five community orchards in South Devon.

In an age of factory food production, to have fresh apple juice produced on our doorstep, from our own apples, is indeed something to be celebrated. No food miles here and the juice could not be fresher.

We always welcome involvement from children in this seasonal activity so that they develop, from an early age, a hands-on understanding of what's involved. This year we will again be encouraging the school to help with the harvest and for parents to bring children to the pressing and bottling. It's quite a labour-intensive process to sort and wash the apples, then chop or scrat them into pulp before putting them in cloth lined trays, called cheeses. These are stacked in the press and downward pressure is applied to squeeze out the juice. It takes around 10kg of apples to produce about 5 litres of juice. After pressing, the pomace (what's left after the juice is extracted) is removed, the juice is then bottled and the whole process starts again. Come and join in.



After pressing, the pomace (what's left after the juice is extracted) is removed, the juice is then bottled and the whole process starts again. Come and join in.

If you have any clean glass or plastic bottles (with screw caps) that you could give us or apples you wish to donate on the day, your contributions would be very much appreciated. For more information please contact Charlotte Rathbone landscape@rathbonepartnership.co.uk

Apple Day is on Saturday October 22nd at Memorial Hall car park from 10:00am

Colin Whybrow

Cindy Evans-Finney
Cindy's Bookkeeping Services
07311 757 584
cindyevansfinney@gmail.com
Modbury, Ivybridge, Devon



Freelance Bookkeeping Services for Sole Traders and Small Businesses

If you would like a **quote**, please send me an **email**.

I will send you some questions to answer so that I can quote you accurately.

No obligation!!



Boat Talk: Thursday 20 October, 8pm, Modbury Inn

An informal get together to talk about anything to do with boats - trips made, planned and dreamt about, maintenance, moorings ...

If you are interested in boats then come along to this, the first of our winter evenings ashore.

tim@cospectrum.co.uk

07493 483811

Tim Beavon

The Next Generation of Gardeners



The Palm Cross Allotment holders were delighted to welcome pupils from Modbury Primary School to the allotments at the end of the Summer term. It was the perfect time of year for such a visit as so many fruit and vegetables were in full 'bloom', and the children were fascinated by everything growing there.

Students from key stage one walked across with their teachers and a handful of parent volunteers, and were met by lots of the allotment owners when they arrived. They then split into smaller groups and were given a tour of the different plots. It was brilliant to see their enthusiasm and excitement about all the different things growing, and they were able to identify most of the plants they came across - with the exception of artichokes which were a mystery to all!

The children dug up potatoes, sampled raspberries and peas, and were fascinated by the cucumber plants and the tortoiseshell caterpillars clustered on a patch of nettles. Perfectly behaved throughout, it was really lovely to see how engaged they were with the whole process of how we grow the things we eat. Hopefully, it means a future generation of budding gardeners has been inspired!

Thanks to all the allotment holders who gave up their time to help show the children what was growing, and to the school too for encouraging such green-fingered community involvement.

Kate Tyler
Modbury School



ALAN MAHER ELECTRICAL CONTRACTORS LTD

- *Electrical Installations*
- *Electric Car Charging installations*
- *Intelligent Lighting*
- *Home Entertainment.*
- *Design, Installation and Testing.*
- *Condition Reports and PAT testing*

Phone 01548 811290 / MOB 07966 168 928
e-mail:-alanmaherelectricalLtd@gmail.com

J R Fox Carpenter & Joiner

All Aspects of Work Undertaken
07771741249 01548831411

jim1127@hotmail.co.uk



Modbury Tiddlers

Playgroup

Come and say hello!

For families with children 0-4 years

Fridays – 9.15-11.15 at Modbury Memorial Hall

Last Friday of the month – out and about day

Term time only

Sensory play, crafts and a dedicated baby area
Dress up, ride ons, toys and more!
Monthly breastfeeding support with refreshments provided
for adults and a healthy snack provided for children



Find us on facebook and instagram for up to date info each week

 Modbury Tiddlers
  @modbury_tiddlers
mail@modburytiddlers.org.uk



Modbury Mission Community

To know Jesus and make him known



St George's Church

Please check our website for our current opening times

www.modburyteam.org



pray

Welcome to St George's Church, Modbury

We are open every Sunday for public worship and the church is open every day if you wish to visit the building for a time of personal prayer and contemplation.

Everyone is welcome and you can find out more about what is on offer from our website www.modburyteam.org. If you want to speak to the Vicar, call Rev. Matt on 01548 830260 or email matt.rowland@modburyteam.org.

October	Service	Service Leader
Sunday 2nd	9.30am Harvest Holy Communion	Rev Matt Rowland
Sunday 9th	8am Holy Communion BCP 9.30am All Age Service	Rev Matt Rowland Rev Matt Rowland
Sunday 16th	9.30am Holy Communion	Rev Matt Rowland
Sunday 23rd	9.30am Sunday Worship	Gilbert Snook
Sunday 30th	10.30am Team Service at Aveton Gifford	Rev Matt Rowland

On a Kids' Church Sunday, children start in Church with their families and then go to their group for age appropriate Bible teaching, a fun session with games, prayer and craft. Each group has two adult leaders, all DBS checked and having completed relevant Safeguarding courses. If you have any questions or would like more information about Kids' Church please contact Sara Chapman at s.chapman@modburyteam.org

CHRISTIAN COMMENT: Substitution

One of my predecessors at St Andrews, Aveton Gifford, was the Rev. Daniel Pitman. He was the vicar in the early years of the twentieth century. History records him as a snappy dresser (unlike the present incumbent!), he would be seen around the village in a black top hat and dark morning suit with tails and starched shirt and collar.

He was also the local magistrate and was known to pay the fines of villagers found guilty when he was sitting on the bench, rather than have the villagers go to prison for being unable to pay their fines.

In doing so he was modelling his boss, not the bishop, but the Lord Jesus Christ, who is the head of the church. Jesus didn't put his hands in his pocket to pay a fine but stretched out his hands upon a cross to take upon himself as the judge his judgement for our sin. That substitution is at the heart of the Christian faith and available to all who come in faith to ask for it.

Matt Rowland

Harvest Gifts

for

Kingsbridge Food Bank

Please bring them to

St. George's Church

Sat Oct 1st 2 - 4pm

or Sun Oct 2nd 9.30

(Harvest service)

Tinned and dried goods, please

St Monica's Roman Catholic Church, Modbury

Mass weekly at 12 noon on Saturday

St Austin's Priory Roman Catholic Church, Cadleigh

Mass weekly 11.30 am on Sunday

01752 895888

ivybridge@prcdtr.org.uk



Modbury WI

The next meeting of Modbury WI will be held at 7.30pm on Tuesday, 18TH October 2022

which will be a Games night. Meetings usually take place on the third Tuesday evening of the month at the MARS Pavilion, QEII Recreation Ground in Chatwell Lane, Modbury PL21 0FS where there is ample parking. You are most welcome to come along as a visitor to see what we do (a fee of £5 is charged to cover expenses, tea/coffee and cake etc).

Please contact me if you would like further information or a programme at

rosiejaneparker@gmail.com

Rosemary Parker



Modbury History Society

The next meeting of the Modbury History Society will take place at 7.30pm on Friday, 14th October when renowned Dartmoor guide and local historian Simon Dell will talk about 'The Georgian Improvers on Dartmoor.'

Membership of the Society is £20 per annum, but guests for the meeting are welcome to attend for an admission fee of £5. Meetings take place at the Pavilion, QEII Recreation Ground, Chatwell Lane, Modbury PL21 0FS where there is ample parking.

Please email me for further information about the Society and its programme.

rosiejaneparker@gmail.com

Rosemary Parker

MODBURY LUNCH CLUB

Senior Citizens living within the Modbury area are invited to join us for a freshly cooked lunch on the last Friday of most months. Dates are regularly advised in the Memorial Hall. In October the lunch will be in the Hall.

If you are interested please contact Kim Wells on 01548 830594 to let us know if you would like to come along and to give contact details. We may be able to arrange transport if needed. We look forward to hearing from you. You will be very welcome.

Jean Davis

Modbury Over 60's Short Mat Bowls Club

We now have a few vacancies for new members at the club. We meet every Tuesday in the Memorial Hall from 2:00pm - 4:00pm.

All equipment is provided, but you are asked to bring some soft soled shoes.

The cost is £2.00 per session to include light refreshments.

Come along and give it a try - no need to book in advance, or call Sue Irish for more details. 01548830244.

Sue Irish

Modbury Education Foundation - Are you aged 17 - 25?

Any person living in Modbury Parish (including Brownston) who is leaving school to start higher/further education or a training scheme is entitled to a small, one-off grant from **The Modbury Education Foundation**.

Please apply by 4th October 2022 with your full name, postal address and brief details of the course you will be taking to sue@mercer5.co.uk.

Sue Mercer

MODBURY PARISH COUNCIL

Modbury Parish Council Office, 2 Galpin Street. PL21 0QA 01548 830222 email parishclerk@modburypc.co.uk

Your Councillors are:

Barry Keel	07795 533704	barrykeel@modburypc.co.uk
Helen Nathanson		helennathanson@modburypc.co.uk
Barbara Price		barbaraprice@modburypc.co.uk
George Rosevear	01548 831427	georgerosevear@modburypc.co.uk
Phil Smith	07759282404	philsmith@modburypc.co.uk
Dave Trigger	07808742372	davetrigger@modburypc.co.uk
Ann Turner		annturner@modburypc.co.uk
Andy Walker		andrewwalker@modburypc.co.uk
Peter Watts (CHAIR)	07721 918129	peterwatts@modburypc.co.uk
Rob West (VICE-CHAIR)	01548 830135	robwest@modburypc.co.uk
Jo-Anne Woodcock	01548 831128	jowoodcock@modburypc.co.uk

How can we help you?

Councillors run drop-in surgeries on Saturdays 10 - 11am in the Parish Office at 2 Galpin Street. The Parish Clerk is in the Parish Council office on Tuesdays 10am - 4pm. Call into the office, phone, email or come along to our meetings on the first Tuesday of every month and speak in the public forum.

Devon County Councillor (Salcombe Division):	Rufus Gilbert	Tel: 01548 856659 rufus.gilbert@devon.gov.uk
South Hams District Councillor Charterlands Ward:	Bernard Taylor	Tel: 01548 830844 Cllr.Bernard.Taylor@southhams.aov.uk

Diary of a Local Beekeeper – Closing down for Winter

Duncan and Justine are busy making sure all their hives are fully prepared for the winter months ahead

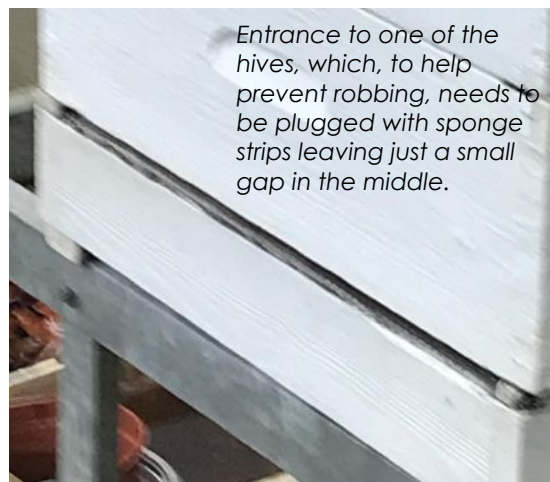
Unlike last year, 2022 will go down as one of the best years for honey production I can ever remember. Of course, this includes the fact that we virtually doubled our collection of hives at the start of the season. Nonetheless, our warm spring and hot, dry summer encouraged high levels of nectar and pollen, of which the bees took full advantage, making our final total output way above the simple doubling of amounts we might have expected. Only towards the latter part of summer did the prolonged dry conditions have a detrimental effect on flower growth, but by then the bees had built up plenty of honey stocks, which they could then utilise to feed themselves and their young grubs. We were careful when we did our last spin in August, only to take honey from hives which could happily spare it – about 10 hives out of the 30 we now superintend.

So, once again, we are getting our bees settled down for the coming winter – a ghastly thought indeed! This is an important time of year for beekeepers everywhere, ensuring that hives survive what could be a long and cold season. Our tasks are many and varied, but always carried out with the bees welfare in mind - I probably described most of them in my article last year!

Varroa reduction: Varroa is a parasite that lives on bees and, if left unchecked, will weaken and ultimately kill them and, in consequence, the whole colony. Varroa breed by laying their eggs in open brood cells, mainly drones, where they hatch out along with the bee larva. As the queens' egg laying is now minimal and there is no drone production, now is the right time to disrupt the Varroa reproduction cycle. Specially treated strips are placed into each hive, which cause the Varroa to fall off their host and through a grill onto the hive floor. Beneath the grill, we place a tray to catch the mites, which we take out and examine regularly. This ensures easy removal of the mites from the hive, prevents re-infestation and allows us to count the number of mites as an indication of infestation levels.

Security precautions: All hives, but especially the smaller, weaker colonies, can be attacked by other insects – mostly wasps, but also bees from stronger hives, who are after their winter stores. To help counteract such threats, we reduce the size of the hive entrances to a minimum, thus enabling the guard bees to better assess potential threats. Wasps are a particular problem as, individually, they are larger and stronger than a worker bee. It's reckoned that it takes four bees to overpower one wasp and highlights how a major wasp attack can soon decimate a hive.

Other unwelcome invaders are mice, which can rapidly decimate all food stocks while the bees are dormant, causing the hive to starve out. To prevent this calamity, we fit mouse guards over the entrances to all the hives, which allow bees to pass through, but not their furry foes.



Entrance to one of the hives, which, to help prevent robbing, needs to be plugged with sponge strips leaving just a small gap in the middle.



Duncan holding a can of syrup and a plastic feeder

Stores: We are currently packing our hives with additional food where needed, to ensure each colony has at least 30lbs of honey stock to survive the average winter. Obviously, there is scant food around for the bees to forage in the cold weather and in any case, honey bees cannot fly in temperatures under 10 degrees. Yet beekeepers ideally prefer a cold, dry winter, when the bees will be less active and so eat less food. Justine and I are now utilising rapid feeders to give the bees a special winter syrup – stronger sugar base with added ambrosia – to help keep their strength up over the coming months.

As well as checking on food stores, we also take care to check up on the actual hive itself – whether it is properly weather-proof and sturdy enough to repel the worst of winter conditions. Chronic damp conditions can be a big killer of bees at this time of year. We also deliberately remove extra layers (supers) from the bigger hives to reduce their overall size, so the bees have a smaller space to keep warm – maintaining bee central heating uses up a lot of vital winter honey supplies.

As we head into winter, Justine and I are working hard to ensure all our hives hibernate in the best possible condition. We look forward to writing again next year, when the beekeeping season starts all over again. There will be honey available in the Post Office for the foreseeable future, which we sincerely hope you continue to enjoy.

Duncan Curral

MODBURY SOCIETY TO CLOSE AFTER FIFTY YEARS

Extraordinary Annual General Meeting of the Modbury Society Held on 24th May 2022 in the MARS Pavilion

The meeting was called to establish whether the time had come to close the Society and wind up its affairs. A poor attendance highlighted the need for discussion. Ironically, the Society was founded on 10th February 1972, 50 years ago this year.

However, times have changed. The Society was founded as an amenity society with the objectives of encouraging high standards of architecture and town planning, to stimulate public interest in the care for the beauty, history and character of the town and to encourage the preservation of general public amenities.

Modern communications have, amongst other things, made most things easier. One of the key roles in the early days of the Society was to keep up to date with planning applications, as they would affect the life and development of the town and the listed status of many of its buildings. In 1972, this necessitated a trip to SHDC in Totnes, now a quick look at their website is all that is needed.

During the past five decades the Society engaged in many initiatives including researching, writing and producing the Village Design Statement (which was used by Sunnybanks Homes and Bloor in the two most recent large housing developments), finally winning The Best Kept Village competition in 2013, contributing to all public enquiries relating to the town, produced the Modbury Heritage Map, a Welcome Booklet for new residents and established street planting to brighten up the town for both residents and visitors alike.

Annual summer parties were held in members' gardens and wonderful Country Christmas concerts in St George's Church. The Society has supported and donated to numerous other causes too including (in no particular order) the May Fair with cream teas and treasure hunts, the Pavilion, St George's 'Raising the Roof' fund, the QE11 Recreation Ground, the Bell Tower restoration fund, both allotment sites, Heritage project walks and website, restoration of the Corn Press and installing a new notice board in Poundwell ... the list goes on.

Looking back, much has been achieved and we would like to thank all our past and present members and committees for their enthusiasm and willing hands. The Society would not have been so successful nor achieved so much without you.

In winding up the affairs, the Society will be supporting the "Amazing Spaces" project for St George's, the History Society with the Heritage website and one or two smaller local projects.

A founding member and long time Chairman was Roger Gage who believed "Modbury to be the centre of the Universe". Roger, committees and members of the Society worked tirelessly for the good of the town.

Nicky Shepley

HELEN MOORE

POWERED BY
exp™ UK

Independent local estate agent
specialising in the sale of
residential and new homes in
the South Hams and Plymouth

01752 962162

helen.moore@exp.uk.com



Pickles Hardware Shop Closure



Mo & Kelly at the Pickles Hardware counter

It was with some surprise and indeed sadness that I saw the "Sale & Closing Down" notice in the window of Pickles Hardware shop some weeks ago, a sentiment I am sure would be shared by most Modbury residents and many others. Pickles had always seemed to be a thriving shop, not least during the pandemic when Richard even extended deliveries to help customers, so I decided to investigate.

Over a cup of tea in their house on a rainy evening in early September, I sat with Richard and Nikki, (with a short appearance by Ella who was busy with her A level studies) to hear the story.

The reason for the closure is quite simple. Richard is now 70 and naturally wants more time to himself to play golf with his mates, more time to holiday with Nikki, and more family time with Ella before she disappears off

to university. He is sad for Modbury to be closing the shop and told me they have tried to sell it as a going concern, but despite a few bites of interest, nothing turned up.

Their plan now is not to sell, but to work out a way to bring new business into Modbury using the ground floor premises, and true to form Richard and Nikki are thinking about the best way to do this. They feel there is scope for new businesses, services, retail, niche markets, etc., and are considering dividing the ground floor into two outlets (subject to achieving the necessary planning, of course!) hopefully to appeal to a wider audience.

Nikki will continue working for Francis Clark Financial Planning in Exeter, and Richard has already started another project locally! They have no intention of moving from Modbury, which is very much their home.

Richard moved to Modbury in 1976 and set up a successful carpentry and joinery business in the town in 1978. In 1991, he bought and converted a former farmhouse and outbuildings off Brownston Street. In 2003, Richard and Nikki went into business together, buying and developing properties. Their projects have included a small development in Champernowne and four barn conversions at Alston, before acquiring Pickles almost 15 years ago.

The hardware shop occupies the ground floor of a huge four-storey building. The shop itself offers a very large floor space, very deep, and an interesting shape with two entrance doors and three windows looking out on the main street, which lends itself to be split into two. They are adamant they want to increase rather than reduce business into Modbury's high street, and have always supported Modbury functions too, with Pickles being the place where shows were advertised, tickets were sold for the productions, and Richard even helped to create some of the props. Above the shop are storerooms, and a large three-storey maisonette, with the entrance from Brownston Street.

So, Pickles as we know it, will close on the 29th October, and at the time of writing, there is 50% off everything, so by the time the Messenger comes out, there may be some bargains left. Hazel, Kelly, Mo and Gill have been with Pickles for many years and will no doubt be sad to see the shop close, but have been very understanding of the reasons for the decisions made. I left somewhat sad, but relieved that in time, Modbury's "high street" would not suffer a loss of business premises, and that at 70, Richard is doing the right thing choosing to spend more time with the family.

John Bower





**Rooster Auction
Sat 15th October
Memorial Hall
7.30 pm**

**Tickets £5 From Pickles
Entertainment, Bar, Food to purchase
It'll be a great evening**



To own one of these wonderful pieces of art

**The Auction will be on Saturday 15th
closed bids can also be made prior to the
live auction at the Post Office,
Brownston Gallery and Marchand Petit
Or at**

www.roosterramble.co.uk/contact



Invitation to Apply for Grant Funding

Are you a non-profit organisation or group providing a service or activities for residents in Modbury Parish?

Do you need some seed funding for a new project or to develop existing activities? Please contact us for a simple application form: Email parishclerk@modburypc.co.uk Call 01548 830222

Download it from our website: <http://www.modburypc.co.uk/document-category/finance-and-hr/>

Write to: Parish Clerk, 2 Galpin St, Modbury, PL21 0QA

Please return the form by Friday 14th October in time for us to consider whilst setting the budget.

If you are unable to complete the form by this date but have an idea of the amount of money you need please email that amount to the clerk.

Our grant funding policy can be found here:

<http://www.modburypc.co.uk/document-category/policy-documents/>

Sally Smale, Modbury Parish Clerk

SOUTH HAMS MOBILE LIBRARY

Saturday 17th October
Poundwell Square
09:45 to 12:15

Tuesday 25th October
Ayleston Park
14:45 to 15:30
Higher Green Park
(Palm X)
15:35 to 16:35

Wednesday 26th October
California Inn Carpark
09:10 to 09:30



**Devon
Libraries**

canec

custom home electrical

With over 30 years experience, working closely with our clients, we find efficient solutions for your home

- Design • Installation • Testing
- Intelligent Lighting
- Home Data Networks
- Green Energy

Tel: 07731 689571 / 01548 821500

Email: simon@canec Ltd.com
www.canec Ltd.com

Insured
Compliant
Experienced



Hipkin-Wale
GARDENS

Garden Design

Onsite and Online Garden Design Services



tracy@hipkin-wale.com
www.hipkin-wale.com



NOAH'S ARK
Baby & Toddler Group

Wednesday Mornings Term

Time 9.30-11.00 am

The QE11 Recreation Ground
Chatwell Lane, PL21 0FS

Hot drinks • Snacks • Songs • Bible story • Craft
Baking activity • Parachute games • Outdoor walks
Outdoor meet up last Wednesday of the month

Contact: louise_rowland@hotmail.com | 01548 830260

Advertising in the Modbury Messenger

To advertise in the Modbury Messenger, please go to our website www.modburymessengercic.co.uk for details of prices and formats for adverts. The Modbury Messenger relies on our advertisers so we would like to thank them.

We also accept adverts for local events and societies, please email modburymessengercic@gmail.com

Personal notices may also be submitted via email at a cost of £10 per 50 words.

**BIGBURY
CAMPING
BARN**



Short stays and weekend breaks.
Group accommodation with
flexible indoor space, TQ7 4AP.
Contact Cathy 01548 810079
info@bigburyholidays.co.uk
www.bigburyholidays.co.uk

ARE YOU LOOKING TO EXTEND OR
IMPROVE YOUR HOME?

WOULD YOU LIKE TO KNOW MORE
ABOUT PERMITTED DEVELOPMENT?

DO YOU NEED A DESIGNER WHO
UNDERSTANDS YOUR NEEDS &
BUDGET?



Architectural plans and designs

**PERRY DESIGN
SOLUTIONS**

CONTACT FRANCIS ON 07811 287763
INFO@PERRYDESIGNSOLUTIONS.CO.UK

**STANBOROUGH CHORUS
AND ORCHESTRA**

CONDUCTOR CHRISTOPHER FLETCHER

SATURDAY 19TH NOVEMBER
7.30 P.M.

Holy Trinity Church, Salcombe

**CHRISTMAS MUSIC FROM
MESSIAH**

**ETERNAL LIGHT - HOWARD
GOODALL**

Tickets £18 (Under-16s free entry) will be available
from:

Kingsbridge Information Centre
May Crimp (01548 842361)
Brigitte Haddy(01548 581465)
Jenny Kinder (01548 810750)
All Choir members

health:hub

End Back Pain & Stiffness

WITHOUT Taking Painkillers
Or Seeing The GP

Back pain is the **most common problem** we see in the clinic..... and it's gardening time!

We have many ways to help those with back pain. No matter how long you've suffered, there is STILL something that can be done.

Find out we can help you with our **FREE TASTER SESSION** or request our **FREE** back pain report, "12 Steps To Eliminate Back Pain And Stay Pain Free" Call us and quote "parish magazine Spring 2022"

www.healthhub-kingsbridge.co.uk 01548852355

Physio Massage Pilates Fitness Exercise



Including:

**Stone Walling • Retaining Walls • Groundworks
Drainage & Irrigation • Driveways
Patios & Paths • Gates • Fencing & Decking etc**

Family Business Since 1976
Company No.3942610

Competitive Quotes Given, Full Insurance

Gatcombe Mill - Littlehempston - Totnes - TQ9 6LW

Office: Tel- 01803 864 871

Email: enquiries@afbrown-sons.co.uk

Web: www.afbrown-sons.co.uk

**"They carried out a number
of viewings in short succession
which resulted in a swift sale"**

"Thank you for going the extra mile!"

We are experiencing an unprecedented demand for properties in your area, with a great many buyers ready and waiting to experience living in our beautiful region.

There has never been a better time to consider selling your home and we are the friendly, knowledgeable agents who can help you to achieve the best price possible, with the least amount of stress.

Call us now for an informal, confidential chat and to see if we can help you.



Luscombe Maye
Estate Agents



01548 800155

Christmas Lights 2022

It's that time of year again, when we start preparations for the Christmas Lights. This year, we have some new volunteers for installation - a big thank you to all those who have come forward - but we need more volunteers for marshalling the switch-on ceremony.

We need people to assist with the road closure and diversions as well as crowd control in Church St. Hi-vis jackets and full instructions will be provided. Radio communications for key locations around the town have been arranged.

If you can spare a couple of hours on Friday 25 November (starting with a briefing get-together at around 1700hrs) please contact Phil Smith on 07759 282404 or pgsmith617@gmail.com.

Phil Smith

Holbeton Film Club



Our programme for the coming months is:

Respect (12A),	Friday 14th October
Summerland (PG),	Saturday 12th November
The Duke (12A),	Friday 9th December

Harry Baumer 01752 830274



It's back!



Puddings and Quiz Night

Saturday 19th November 2022

7.00pm for a prompt 7.30pm start
In Modbury Memorial Hall

Another great night out to exercise the brain and tempt the taste buds!

Raffle

Tickets £6 (to include first pudding) available at
Fifth Sense from Saturday 5th November

Make up a team of 4-10

Buy early to avoid disappointment and then you **must**
book your table with Sue Chambers on 831447

Bring your own drink, glass, nibbles, bowl and spoon

A community event organised by St George's Church

Make this year extraordinary

Start your journey. Speak to one of our experts in a free consultation.



sales@distinctiveworldtravel.co.uk · 01548 859 272
35 Church Street, Modbury · distinctiveworldtravel.co.uk



EST. 2005

**DISTINCTIVE
WORLD TRAVEL**

Questions from the Undergrowth

Following a number of nursing/care homes over recent years closing and the impending adoption of the Neighbourhood Plan, is it time for the town to lead the way and identify an exception site in the bottom of town for a new nursing and residential home?

Would this help the town to play its part in easing bed blocking at the Hospital?

Would the plan increase footfall in the Town?

Would a new home increase job opportunities?

Bill Cole

Stroll and Chat Group

every Wednesday

Poundwell Carpark,
Modbury

11 – 11.30am

then at Cool Beans Café

Walk at your own risk

All welcome

Contact Jenny Beavon

07985 759881

CRAFT GROUP

Memorial Hall, Modbury



Every Thursday 2 to 3.30pm
All abilities welcome

£2

Please contact Wendy on 01548 831219
for more information.

The walk on the 4th October will be the Yealmpton riverside walk - meeting at 10.00am to catch the 10.08am Plymouth-bound bus.

The walk on the 18th October will be at Bolberry Down and need to be a car share, so please speak to a walk leader at the previous week's local walk so that arrangements can be made.

The walks on the 11th and 25th October will be local ones - meeting at Poundwell car park at 9.45am for walks around Modbury starting at 10.0am.

Walk Leader contact details:-

Sue Rogers 01548 831289
Jean Wright 01548 810029

Catherine Speight 01548 830195
Ann Brooks 01548 550300

Sue Rogers

walk&talk

Are your feet trying to tell you something?

If your feet are crying out for professional care:



Call me today

for advice & treatment for:
Difficult Nails, Heel Pain, Corns and Hard Skin, Diabetic Foot Care, Verrucae, Cracked Heels, Bio-mechanical Testing, Sport Injuries etc

Home visits or treatment in our Aveton Gifford clinic Mon-Fri and Eve & Weekend appointments on request



Bernard Hill Podiatrist
Bsc (Hons) MChS

2RightFeet
Podiatry/Chiropody
01548 830 761

Or call **07808 953 538** leave a message and I'll get back to you
www.2rightfeetpodiatry.com



"GREAT FUN!"

"VERY FRIENDLY"

"BRILLIANT; I LEFT FEELING UPLIFTED AND RESTORED"

All abilities welcome

Seated dance & Singing Sessions

 **Home Instead**
It's us, it's personal

Home Instead Ivybridge are proud to sponsor Modbury seated dance and singing sessions (especially the cake 😊)

Sing: Raise your voice with the joy of singing favourite songs in a friendly, relaxed atmosphere.

Dance: SEATED in a circle – move your arms to beautiful music from around the world.

Eat cake: Homemade cake served with your cup of tea and time to catch up with the others.



Location
Modbury MARS Hall
PL21 0FS
(at the top of Sheepham cutting)

When
Every third
Wednesday of
the month

Time
14:30 - 16:30

Cost
£3 per person

PLEASE CONTACT JENNY FOR MORE INFORMATION ON 01548 830937 OR 07787786994

Home Instead Ivybridge providing quality care at home to our elderly community in Modbury and the South Hams.
Contact Martin on 01752 938220 or martin.allison@homeinstead.co.uk

INTENDED MONTHLY FLAG HOIST AT PALM CROSS GREEN - OCTOBER

The flag hoists will only use the International Code of Signal Flags, which can be found at:
[international code of signal flags - Bing](#)

Date	Masthead	Starboard Yard (Plymouth) - West	Port Yard (Modbury) - East	Event
07	Union Flag	AFGHANS	Ans202 nd sub1	Start of Afghanistan War 2001
11	Union Flag	2BOER	Ans1893 rd sub	Start of Second Boer War 1899
14	Normandy Flag	HASTING	1063 rd sub	Battle of Hastings 1066
15	Rooster Heritage	AUCTION	Modbury Rooster	Auction of Roosters
21	White Ensign	TRAF3 rd subLG2 nd sub	1805	Battle of Trafalgar 1805
23	White Ensign	TRAF3 rd subLG2 nd sub	SUN	Trafalgar Sunday
24	UN Flag	FOUND	1945	Founding of the UN 1945
25	Army Flag	AGINCOURT	141 st sub5	Battle of Agincourt 1415
28	RM Flag	FOUND	162 nd sub4	Founding of RM 1664
29	Union Flag	SUEZ	Ans1956	Start of Suez Crisis 1956
31	RAF Ensign	BRITA3 rd subN	1940Ans	End of the Battle of Britain 1940

Royal British Legion - Modbury Branch



The next meeting of the Modbury and District Branch of the Royal British Legion will take place in The Club on Wednesday 5th October 2022 starting at 7.30pm and this will be the Annual General Meeting. New members are always most welcome. Just a reminder; all will note that the day of our meeting has now been changed and the Branch will meet on the first Wednesday of every even month and not a Monday. Also the launch of this year's Poppy Appeal will take place on Saturday 29th October outside the Post Office at 10am.

David Scott (Hon Secretary)

The Filo Project - What a Difference a Day Makes

The Filo Project is a not-for-profit organisation offering high quality day care for small groups of older people. We support individuals across Devon and Somerset who are socially isolated, many experiencing symptoms associated with moderate dementia. Each day is provided by a host, and takes place in the intimate setting of a host's own home. This warm and welcoming environment is key and no client is overwhelmed by a large group.

Apart from having a home-cooked lunch, what occurs in each group varies, and very much depends on who is in a group, and their capacities, preferences and personalities. It is a bespoke service, however, the focus of any day is to provide the opportunity for meaningful socialising.

A day with The Filo Project is like a day out with friends, and, at a stage of life where many older people often find themselves excluded. The Filo Project provides a time and space to feel at ease and be valued. A by-product of our service is that carers can enjoy regular and extended respite. Transport is also provided.

For more information visit www.thefiloproject.co.uk or contact us on 0333 939 8225 : info@thefiloproject.co.uk

MODBURY-BASED MORTGAGE & PROTECTION BROKERS

A family-run business with over 20 years industry experience.

- Mortgages
- Remortgages
- Buy to Let
- Commercial

- Help to Buy
- Bridging Finance
- Life Assurance
- Home Insurance

Book a free, no obligation appointment

Tel: 01548 831 670

www.strakerfinancialservices.co.uk



Straker Financial Services

Authorised and regulated by the Financial Conduct Authority (999746) Your property may be repossessed if you do not keep up repayments on a mortgage or any debt secured on it.



I'm Jackie, Volunteer Co-ordinator at the Foodbank. While we have many volunteers on our regular schedule we can never have too many. To give you some insight into how you might best contribute, below is a brief summary of how the foodbank operates.

Food is packed and delivered every day; few clients come to the bank in person.

In-house jobs involve, as well as packing bags, stacking shelves, tidying up (we tend to take in white goods and basic furniture for needy clients), breaking bulk (bacon, sausages, cheese, sugar, rice, etc etc), making coffee, emptying bins, and so on. We try not to have large numbers of people in the building at any one time, since Covid landed. Most volunteers stay for a few hours, maybe 0930 till 1200, maybe 1400 - 1630, some work longer shifts, say 1030 to 1600 and so on. There are always jobs to do, many of them unglamorous!

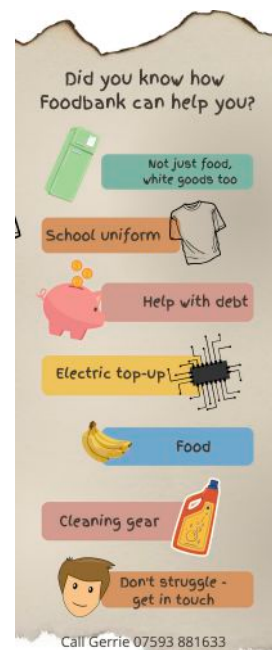
Deliveries go out at the same day/time each week so that clients know when to expect delivery. Regular drivers take the same run/s every week, some doing a single run, others two or even three runs. Each run consists of between 4 and 6 households - you can see how much room a car needs for at least three bags for each household! Households can be single, couples, families and family plus - maybe 7 children in a combined household. I also have a list of 'stand in' drivers who take on deliveries when the regular drivers are absent. The number of client households on our books has grown since the end of last year, now totalling 165 (420+ individuals). The current economic climate is pushing more people to ask for help.

An in-between role is **shopping!** Every day requires some specific shopping to be done, which is usually best done between 0830 and 1030, before shops get busy. This can require 40 loaves of bread each day, maybe 10 trays of children's yogurts, 48 tins of beans, or specific items for those with special dietary needs: lactose free, gluten free, diabetic, vegan/vegetarian. We also need to carry out a supermarket sweep a few times a week collecting the donations from Morrisons and Tesco. I put together a shopping list for the next day each evening.

Confidentiality in all roles is essential as we encounter genuine poverty, sadness, desperation, loss, fear, mental health issues, as well as those who've lost employment and are waiting for benefits assessments to come through. Some clients have been on the books for a very long time, others may only be with us for a few weeks until things get sorted out. The bottom line is that we exist to provide food, and it's not our place to question how come people need us. We do ask for new clients to get a referral from a formal outside agency, which might be GP, social services, job centre, Citizens Advice, who are expected to explain the reasons for referrals. But we never turn anyone away while they're getting the referral. Some clients are referred to us as safeguarding concerns, vulnerability, and so on.

If you'd like to come in for a chat and to look around please let me know when would suit you.

Email: kfbvolunteering@gmail.com or call 07593 881633



Modbury Messenger November Copy Date 10th October

The copy date for the November 2022 Modbury Messenger is 10th October. Please email all articles, notices of events and paid advertisements to modburymessengercic@gmail.com.

The Modbury Messenger is published by Modbury Messenger CIC and is printed by Kingfisher Print. The views expressed in the Messenger do not necessarily represent those of Modbury Messenger CIC.

The Editorial Committee reserve the right to précis/abbreviate any copy submitted for inclusion in the Modbury Messenger. Their decision is final. The contents of the Modbury Messenger may not be reproduced in any form without the prior written permission of Modbury Messenger CIC.

modburymessengercic@gmail.com

MODBURY MESSENGER CIC

Modbury Messenger CIC is a Community Interest Company and as such is registered by the Registrar of Companies for England & Wales, Northern Ireland or Scotland. A Community Interest Company is a special type of not-for-profit limited company which exists to benefit the community. The purpose of Modbury Messenger CIC is to disseminate information about events, notices and articles of interest to the people of Modbury and it does this by publishing the Modbury Messenger, a printed newsletter, every month with 1000 copies delivered to homes and businesses within the Parish of Modbury. An online copy of the Modbury Messenger is available to neighbouring communities, advertised via social media and on our website modburymessengercic.co.uk

Advertisers are charged a fee for advertising in the Modbury Messenger and this covers the cost of producing the Modbury Messenger. The Board of Directors, Company Secretary, Editor, Proofreaders and Distributors are all volunteers.

Directors of Modbury Messenger: Christopher Barnes, Diana Lynne Barnes, Burda Gage, Bernard Taylor.

Company Secretary: George Rosevear.

Editorial Committee: John Bower, Lynne Barnes, Nicky Shepley, Ira Young.

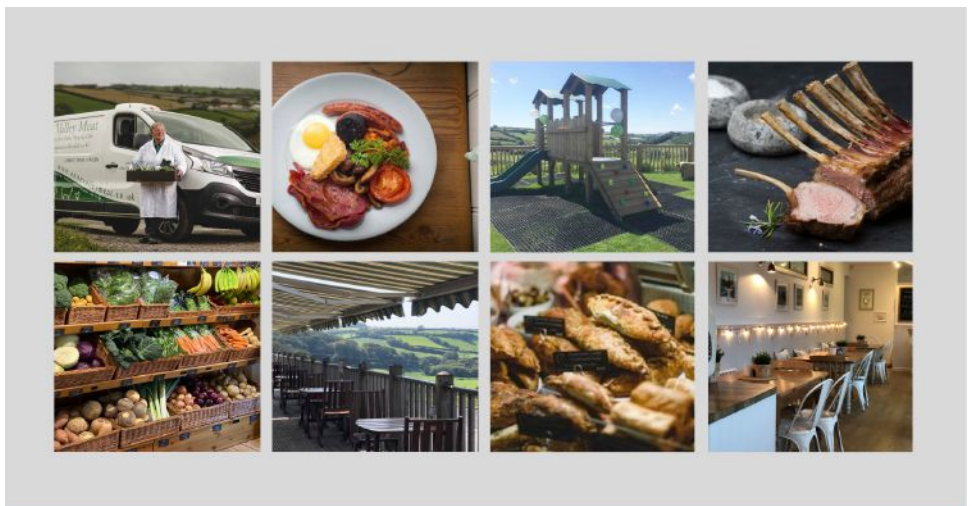
Modbury Messenger CIC has produced the Modbury Messenger as an independent CIC since September 2018. Previously it was published by Modbury Parish Council.

 **Modbury**
Massage Therapy
Relax, Revive, Rejuvenate

Deep Tissue Massage
 Sports Massage
 Holistic Massage
 Aromatherapy Massage
 Pregnancy Massage
 Waxing

Contact Martha 07990773153
 info@modburymassagetherapy.co.uk
 www.modburymassagetherapy.co.uk

@ Brownston Street, Modbury &
 Wholesome Life Chiropractic, Ashburton



Aune Valley Meat & Valley View Café
 Free Local Delivery
 www.aunevalleymeat.co.uk




Put your feet in safe hands

Full range of podiatry treatments including:

- Nail cutting
- Corns and callus
- Diabetic foot checks
- Ingrowing toenails incl. nail surgery
- Fungal nail treatment
- Verrucae

Jackie Thomas BSc (Hons) MCPod.
 10 Glanvilles Mill
 Ivybridge
 PL21 9PS

01752 426075
 feet@ivybridgepodiatry.com
 www.ivybridgepodiatry.com
 HCPC registered: CH33566



ARCHITECTURAL DESIGN & SERVICES
 contact Jon & Emily Sullivan to discuss your requirements further

- Planning Applications
- Building Regulations
- On Site Supervision

arb
 Architects Registration Board

NEST DESIGN
 25 Galpin Street, Modbury, Devon, PL21 0QA
 www.nestdesignstudio.co.uk 01548 830409

For customers who expect more from their estate agent.

Our team has over 80 years of South Devon estate agency experience.

01548 831163
 modbury@marchandpetit.co.uk

SOUTH HAMS' LEADING ESTATE AGENT

Marchand Petit
 ESTATE AGENTS

**Sales
 Lettings
 Auctions**



 **Coast & Country Cottages** 

Join the South Devon holiday letting experts

With over 20 years' experience in holiday letting, our locally-based team are proud to offer expert knowledge, bespoke property management options and consistent year-round bookings.

Contact us today to find out about the award-winning support we could offer you.

Find out more | 01548 802179
Order a free Owners Guide | coastandcountry.co.uk

Est. independent LOCAL ELECTRICIAN

Dependent, honest and reliable service



- Complete rewires and new builds
- New 18th edition Consumer Units/Garage Units
- Landlords & Insurance Certificates
- Domestic electrical fault finding
- Specialising in garden, kitchen and floor lighting from planning to certification

All work guaranteed/certificated
Fully insured, qualified & registered with NICEIC



Call Phil for a free, no obligation quote or callout
Tel: 07769 840012

Email: lightworks.electrics@gmail.com



ERMINGTON HOUSE
Quality Residential Care



Ermington House

CQC overall rating

Good ●

6 January 2021

Quality Care 24 hours a day in an idyllic location

- 24-hour Person-Centered Care
- Highly trained, caring and attentive staff
- Daily stimulating entertainment and activities
- Home cooked, nutritional and appetizing meals
- Safe and secure environment
- Daily visits by District Nurses
- Regular visits by Chiropodist, Hairdresser, Dentists, Opticians and GP's
- Beautiful personalized en-suite bedrooms
- Respite and Long-term Care

Ermington House, Ermington Nr Ivybridge, Devon PL21 0LQ
Email: enquiriesermingtonhouse@outlook.com | Tel: 01548 830076