



Illustration - Jennifer Johnston

## Modbury Wins Multiple South Hams Community Awards



Full details on p. 25

## FALCON ENVIRONMENTAL SERVICES

Local trusted experts in:

- Pest control
- Wildlife management
- Specialist cleaning
- Bird control

We combine our environmentally-friendly approach with proven modern and traditional methods.

Call Us: 01752 929292 | [www.falcones.co.uk](http://www.falcones.co.uk)

Google ★★★★★



## Modbury May Fair 2026

# Pirates

Full revised programme inside as a centre four-page pull out

## NC NEALE'S CAVERN

We are based in Modbury - PL21 0PS

Contact us on: 07920 461079

Email: [info@nealescavern.com](mailto:info@nealescavern.com)

Bookings can be made from our Webpage - <https://www.nealescavern.com>

WE ARE OPEN MON - SAT  
10:00AM - 17:00PM

## WE DO REPAIRS! BRING YOUR DEVICE

The Premier Gadget Repair Centre  
You Break it.... We FIX it!!!

Neale's Cavern can help you with your faulty phone, device, tablet, or gadget. One of our skilled technicians will quickly repair your phone and have it back to you as soon as possible.

We repair all makes and models of Mobile phone, iPad, Laptop, MacBook and GHD repairs.

We also sell Stationery, batteries, Dog treats, Hardware Electrical, Fire wood and Coal, Paint brushes, Cleaning and Phone/iPad leads & Chargers.

## MICHAEL R HAGGER

### Professional Painter & Decorator

City & Guilds Advanced Craft trained

Over 40 years decorating  
experience, with the last 26 years  
in the wonderful South Hams.

Fully Insured



For a friendly,  
no obligation  
estimate or  
reference

Tel: 07977445521



## MARTIN LEY PLUMBING & HEATING

- Oil Installations,  
Servicing & Repairs
- Unvented Cylinders
- Bathrooms & Showers
- General Plumbing

Tel: Modbury 01548 830609  
Mobile: 07811 934551

## Tall Orders Landscaping

All aspects of gardening

- \*Hedge trimming / Tree work
- \*Grass cutting - Lawns to Paddocks
- \*Fencing / Turfing / Stump grinding
- \*Weed control / Lawn Scarifying

### Logs Supplied

- \*Locally sourced hardwood
  - \*Delivered in dumpy bags / nets
- Tel . 01548 831139 / 07967258318



ARE YOU PAYING TOO MUCH TAX ?  
ARE YOUR ACCOUNTS AND TAX AFFAIRS UP TO DATE ?  
ARE YOUR ACCOUNTING SERVICES COMPETITIVE ?

FOR A SERVICE SECOND TO NONE CONTACT

### MARTIN E RANWELL, FCA ELLIOTT & PARTNERS

ACCOUNTANTS AND TAX CONSULTANTS

KINGSWAY, 10 THE PRIORY,  
MODBURY PL21 0TL  
AND AT 6 MODBURY COURT, 32 CHURCH STREET  
T. 01548 830432 M. 07763 526814

[martinranwell@googlemail.com](mailto:martinranwell@googlemail.com)

EXTENSIVE EXPERIENCE IN BOTH COMMERCE  
AND THE PROFESSION  
ALSO PROPERTY MANAGEMENT SERVICES



## Coastal Computers

- PC & Laptop Repair / Upgrades
- Internet & Email Support
- Device Security & Protection
- Smart Home Devices
- Data Migration & Recovery
- General Guidance

[www.coastal-computers.co.uk](http://www.coastal-computers.co.uk)  
[info@coastal-computers.co.uk](mailto:info@coastal-computers.co.uk)  
07459 766420

## Modbury taxi



Contact  
Tel : 07455393693

### Modbury Private Hire Taxi

Pre booking is required for all local and longer  
distance journeys. This includes daytime,  
evening and airport transfers. Prices are  
agreed on booking.

Please don't hesitate to contact us if you have  
any questions.

**07455393693**



### Architectural Drawings and Planning Applications

Contact Alayne Harris B.I.D.  
0755 191 0874  
[info@designedspace.co.uk](mailto:info@designedspace.co.uk)

Based in Modbury



GEORGE H.W. ROSEVEAR  
& COMPANY  
A DIVISION OF HOLBROOK ASSOCIATES

ACCOUNTANCY, TAXATION AND  
COMPANY SECRETARIAL SERVICES

**01548 831427**

3 MODBURY COURT, 32 CHURCH ST.,  
MODBURY, DEVON, PL21 0QR  
[george@holbrookass.com](mailto:george@holbrookass.com)

## A.R.Hilder

B.Sc est 1985

### Garden design, care & Maintenance specialist

I can care for your borders,  
shrubs, trees, hedges,  
vegetable patch & fruit trees

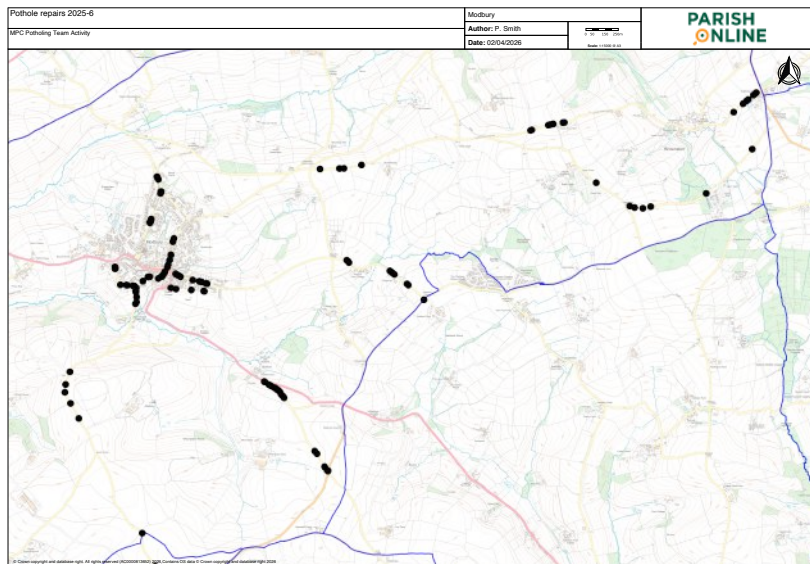
FORMER VOLUNTEER NATURE RESERVE  
WARDEN AND FORMER HEAD GARDENER TO  
A CORNISH ESTATE WITH OVER 40 YEARS OF  
EXPERIENCE. I CAN HELP TO ENCOURAGE  
MORE WILDLIFE INTO YOUR GARDEN

Call 07762 269436 for free  
initial consultation

# Pothole Repairs 2025-6



**MODBURY**  
PARISH COUNCIL



As readers will know, one of the key issues which the Parish Council continues to tackle on behalf of parishioners is road conditions. For the main part, we can only lobby the Highways Authority, especially for the main roads and for the larger potholes on the rest of the network. However, our Road Warden agreement with Devon County Council does allow us to undertake smaller repairs on the unclassified roads around the Parish.

We are pleased to report that during the last 12 months our Road Warden Team has repaired no less than 188 potholes in 135 locations as illustrated by the accompanying map.

Thank you to Parish Councillor Bill Cole and his team for their wonderful efforts during the last year. They are all volunteers who offer their service without financial reward and if anyone else would like to join the team, please contact the Parish Clerk.

**Phil Smith, Chair of Maintenance, Modbury Parish Council**

## Connecting People & Landscapes



Connecting People and Landscapes (CPL) is a 4-year project that brings together farmers, and communities across Devon to create a more resilient landscape in the face of a changing climate.

Made possible with funding from the National Lottery Heritage Fund, the project looks at the impact that climate change is having on wildlife in farmed landscapes, focusing on nine threatened nocturnal mammal species. It aims to build understanding of how nature-friendly regenerative farming supports biodiversity and creates resilient landscapes. We're working with 6 focus farms across south & east Devon, one of which is at Holbeton.

We welcome all ages and levels of experience, bringing communities and farmers together to connect and learn through events, activities, and wildlife monitoring. For example: Nature walks and farm visits, learn how to soil sample, tree plant and learn about hedgerows, biodiversity surveys on farms, conservation task days, online and in-person training sessions, bat walks etc.

**7th**  
MAY

**CONNECT CAFE: WHAT HAPPENS ON A BAT WALK?**

online event

You don't need any previous experience to get involved with CPL, just an interest in the natural world. Please follow the link; CPL Spring 2026 Newsletter (Flyer (A4)) to find out about the online and in person events that we've already arranged. There'll be lots more to come.

<https://cdn.bats.org.uk/uploads/pdf/CPL-Spring-2026-Newsletter.pdf>

## PAUSE FOR THOUGHT

Can you feel the buzz of energy all around you? It's May, baby! It's a beautiful month to invite in balance and intention before summer fully arrives. It's so easy to fill those extra couple of hours of daylight, but I invite you instead to keep the space — to do what intuitively feels right in that moment, rather than jam-packing our schedules and tiring ourselves out before summer has even arrived.

May is a month of bloom and beauty. Sea thrift comes into bloom along the coastal cliffs, and wild garlic sprouts up in the woodlands. Can you feel the energy and inspiration that the sun brings? Don't overcommit — savour it and notice what energises you.

- Take a big breath in, and sigh it out. You have time and loves. All that you hope for is coming your way.
- Grab a pen and paper, find a cosy little nook, and enjoy these journal prompts:
  - What energises me naturally?
  - What drains me — and why am I still holding onto it?
  - Where am I overcommitted?
  - What would "gentle progress" look like this month?

I hope this month you feel the sun across your skin, love in your heart, and wild garlic pesto in your tummies.

Big Hugs

**Becky Hickman and the Wellness Warriors Team**



*Tailor-made* **travel arrangements to Africa and Latin America.**

35 Church Street, Modbury • 01548 859 272  
sales@distinctiveamericas.com  
www.distinctiveamericas.com



**DISTINCTIVE AFRICA**



**DISTINCTIVE AMERICAS**



## Modbury Therapy Centre *Health and Wellbeing Centre*

**Offering Complementary Therapies**

Acupuncture, Reflexology, Massage Therapy, Homeopathy, Counselling, Psychotherapy, Nutritional Therapy, Yoga, Pilates, Meditation, Cognitive Behavioural Therapy, EFT, Life Coaching, Sound Healing

[www.modburytherapycentre.co.uk](http://www.modburytherapycentre.co.uk)  
[enquiries@modburytherapycentre.co.uk](mailto:enquiries@modburytherapycentre.co.uk)  
**07973 367517**



To advertise your business in the Modbury Messenger, please contact us at [modburymessengercic@gmail.com](mailto:modburymessengercic@gmail.com)  
[www.modburymessengercic.co.uk](http://www.modburymessengercic.co.uk)

## Diary of a Local Beekeeper: Back on the Beekeeping Bandwagon for Another Season

*That great British obsession, the weather, dominates as the new season gets into its stride*

It's early April as I write this article and we have been lucky to enjoy some warm, spring days, although there are still enough cold fronts lurking to remind us that winter can linger, unwanted, for a while yet. Nonetheless, the 2026 beekeeping season is off and running energetically. Justine was barely in the door from her travels, before she was dusting off her bee-suit ready for our first hive checks! Now is a challenging time for our bees, who are not only consuming vast amounts of food themselves, but also feeding a rapidly expanding number of young brood. Bees that have survived winter die off quickly in the spring, which means the new brood has to take over fast. Successful hives with strong queens can expand numbers rapidly, as long as workers can fly and forage for food, which of course, is weather dependent. It is very rewarding therefore, to see our busy bees bringing in loads of pollen in a variety of colours, collected from a range of flowers. Both honey and bumble bees carry pollen in sacs called corbiculae, attached to their hind legs, which is combed off by a gaggle of workers once they're back inside the hive. The bees returning so laden is a sure sign that brood rearing is well underway again.

It's been a gloomy winter for bees and beekeepers this year, with large numbers of hives dying out right across the UK. None more than in Devon and Cornwall, where many beekeepers have tragically lost all their stock, including some well-established colonies. There has been much debate about the precise cause of this phenomenon, but I think it is down to a combination of factors, exacerbated by a protracted period of unusual weather conditions. Firstly, we had a very mild autumn and early winter, which confused the bees' hibernation cycle and led the workers to continue foraging and the queens to lay brood far later than usual. Some queens became exhausted by the extra work and died, effectively condemning the colony. This prolonged hive activity also enabled varroa

to breed and build up their levels. Varroa lay their eggs in brood combs, where they feed on the young larva and greatly weaken the overall health of the hive. We then endured a lengthy spell of wet weather from early January, to mid-March, which caused a build-up of damp and mould in some less protected hives – an anathema to hibernating colonies. So, I'm reasonably sure that a combination of a shortened hibernating period, coupled with high numbers of varroa and a wet and soggy winter has created a perfect storm of adverse conditions which some colonies could not, sadly, surmount.

Against this back-drop, Justine and I are happy to report that we lost only two hives. All the others are now rapidly growing in strength and numbers, and building up honey stores. This season there are a clutch of oilseed rape fields within close range of our various sites, which the bees love to visit, so we are anticipating a good crop of early honey in May. We plan to cream some of our rape honey this year. You may recall that rape honey crystallises quickly into a very hard, sugary texture in the jar. Some people love it, but for those who prefer a more pliable texture, then creamed honey could be the answer. A creamer is basically a tank, containing a set of paddles which rotate slowly, stirring the honey in a way that loosens its propensity to crystallise quickly, leaving it soft, but without forfeiting any of its flavour. We hope to start offering both versions of this Modbury honey for sale in Neale's Cavern, in May.



*Bees carry pollen in sacs called corbiculae, attached to their hind legs*



*Another image of the bees' corbiculae, filled with a variety of pollen colours*

**Duncan Currall**

# SPACES

MODBURY

Premium office, treatment  
or therapy rooms to rent.  
Flexible terms available.

## OPENING SOON

VISIT WEBSITE OR CALL  
TO BOOK A VIEWING

SPACESMODBURY.CO.UK

01548 704004

Unit C Pearse Gardens,  
Modbury, PL21 0FX  
(next to Bombers PT gym)



Inclusive social space to write and share  
Absolutely no experience needed  
Complete creative freedom  
Monthly get togethers

@thepoetryclubdevon  
thepoetryclubdevon@gmail.com



 Luscombe Maye  
Since 1873

## The Luscombe Maye Advantage

To find out how much your home is worth,  
please call or email Eleanor, Sara, Janice or  
Ryan in the Modbury office.

For more information contact  
[modbury@luscombemaye.com](mailto:modbury@luscombemaye.com) or  
call 01548 830831

[luscombemaye.com](http://luscombemaye.com)  [luscombe maye](https://www.facebook.com/luscombe_maye)  [luscombe\\_maye](https://www.instagram.com/luscombe_maye)

# GEOFFREY JAMES FIELDEN "GEOFF": HIS LIFE IN MODBURY

**Auctioneer, Estate Agent, Land Agent, District and Parish Councillor, Sheriff of Devon, Chairman and Secretary of the Modbury Club, sat on and chaired many committees.**

Geoff was born on 10 January 1939, born in Plymouth and was brought up in Beechwood Avenue, Plymouth, near Mutley Plain. His family moved to Modbury during the War to avoid the Blitz, living in Upper Sheepharm Farm, moving into the Town in 1971.

After attending Plymouth College, he set up an Estate Agent's business in Brownston Street below the house he and Margaret lived in. He used the phrases, Marvellous Modbury and Lovely Loddiswell as slogans. He often said he bought or sold most of the houses in Modbury. This was a success, and after a while another agency was opened at the far end of Mutley Plain in Plymouth.

His next venture with Margaret was to start to expand the Auction side of the business, running the Plymouth Car Auctions in the Old Cattle Market in Plympton and having a salesroom in Modbury in Back Street which is now the Old Coach House. This was expanded with the purchase of the large building in Poundwell and turning it into an auction room.

The next stage in his business life was to join Shobrooks of Plymouth, a Plymouth auctioneer and estate agent, as a consultant. The estate agency side of the business was closed and Geoff finally retired aged 75 years. Every spring and autumn, he ran a boat auction. It was a large, grand affair on Sheldon beach selling boat bits and pieces. Probably his most grand auction was that of the Palace Theatre, in Union Street. It certainly made the Western Morning News.

As well as running a successful business, Geoff played a very active role in the community, a member of Modbury Parish Council for many years, then moving on to be a District Councillor and being Chair of planning at South Hams District Council for several years. He also became Sheriff of Devon for a while. The Modbury Club was another passion of Geoff, being Chairman and Secretary for many years. He also served on many Modbury charities and committees, never afraid to speak up and put his views forward, forcefully if needed.

He loved Modbury and its people with a passion, never wanting to leave. Always passing the time of day with you either in the street, pub or cafe.

Marvellous Geoff, thank you for all you have done for Modbury, the town and the people will miss you.

**Rob West**

## **Personal note from Rob West.**

I have known Geoff all my life. When Geoff and Margaret moved to Modbury, they became friends with my parents, Derrick and Estelle, and over many years Geoff and Derrick would spend many happy hours talking business (as they both ran small businesses) and had a lot in common.

In the early years, we would call Geoff, Mr Fielden as a mark of respect. This only stopped when we became adults ourselves. Growing up, respecting Geoff turned into a friendship with our respective families as we all grew older.

Gill remembers helping him with auctions in Back Street and having to run back and forth to his office in Brownston Street.

We will miss you Geoff; sorry I didn't finish your boat!!!!

## **From Peter Watts**

Being a local, born and bred, I have known Geoff ever since he and his family moved to Modbury. He was a neighbour when my wife and I lived in the top flat above what is now known as Neale's Cavern. He was very much a part of the community, and I have many memories of him as an auctioneer when he owned the auction rooms in Poundwell. He was a dedicated trustee of the Modbury Club and often discussed politics with my late father-in-law, a subject they both cared deeply about and which he retold on many an occasion. Geoff and I sat as Parish Councillors and he also went on to become a District Councillor with South Hams District Council. In my role as Chairman of the now Modbury Recreation and Sport Trust, I remember and thank him for his help as District Councillor in supporting the case for grant funding towards the build of the QEII Recreation Pavillion which opened in November 2013. He will be greatly missed.

## **From Sally O'Neill**

I've known Geoff and Margaret and worked for them for 40 years. Geoff at that time was often working in Plymouth, so I initially spent most time working for Margaret. Only in later years when Geoff had retired and Margaret was unwell did I have the time to get to know Geoff, a bit better. Geoff was a very kind and loyal person. I saw, first-hand, the tender care he gave to Margaret. After she died, he came to rely on me as well as others, a lot more. When he was in hospital, he would often call me early in the morning to ask me to do things for him. There was real mutual trust in our relationship ... I'm going to miss him terribly.

### From Roger Pickles

Geoff was a good friend and, for 32 years, a neighbour. He had a great sense of humour. After opening his estate agency in Brownston Street, he called the White Hart his Branch Office (Monday to Saturday) and on Sundays, it was Chapel. When we opened Pickles for the first time, he and Margaret were "queueing" outside and he bought 2m of curtain track! As part of his business, he did house clearances and before he had an auction room in Poundwell, he held auctions in the Memorial Hall, Helen's father helped as did I. I remember if items did not sell, they were sold to me or Percy for £1! If you had difficulties with the local authorities, Geoff was the first person to talk to for info on a way around the problem! Geoff got involved with so much in the town, he, together with others, helped build the Fair floats for the May Queen.

### From Michael Young

My work meant a relocation to Plymouth in 1982. We quickly realised that we needed to live east of Plymouth and, of course, consulted Geoff as to somewhere to live. He showed us a cottage near Ermington, as he had nothing in Modbury then. As a true estate agent, he knew almost all about us by the end of that viewing. A year later, we eventually moved to Modbury. He had become an avid supporter of the Modbury Club and, towards the end of the eighties, he expressed his concern that the mortgagee was close to withdrawing its funding and I helped Geoff build his defence and raise the mortgagee's confidence in the Club's financial control. Later, I helped with producing the accounts. Geoff's tenacity won through and my wife remembers Geoff stopping her in the street decades later to say with delight that the mortgage on The Club had been paid off.

### From Gerry McAllister

I first met Geoff in 2021 when enquiring about the lease of his shop in Brownston Street. He was sceptical, at first, about the idea of a toy soldier shop and whether it would do well. I signed the lease with him and as time went on, with increased numbers of visitors to the shop, Geoff's scepticism mellowed and he would often come in to have a chat about the toy soldiers, and times past in Modbury. The conversation would usually start with a very warm appreciation of the old oak chair in my shop and that if I was to sell it, to give him first refusal!

He recalled as a young boy, a regiment of Sikh Artillery based at the Modbury Barracks during the 2nd World War and ardently emphasised their restrictions on fraternising with the locals. He would often recall happy days working with his wife Margaret when he set up the first estate agent in Modbury, and her role as his secretary.

I am grateful to Geoffrey for giving me the opportunity to get established in Modbury and his well wishes when I moved to the high street. Geoffrey loved Modbury and enjoyed the company of all who knew him. He was very warm and accommodating to new arrivals, as is the Modbury way. His kindness with folk, his influence and his knowledge of Modbury in the community will be greatly missed by me and all who knew him.

## walk&talk

Walks will be on 5th, 12th, 19th and 26th May.

The venue and travel arrangements for each of the walks will be discussed at the previous week's walk and decided according to the weather forecast for the walk day.

Walk leader contact details:- Sue Rogers 01548 831289 Jean Wright 01548 810029

**Sue Rogers**



### Craig Kensett

Highly Experienced Carpenter

Home Improvement  
Custom Carpentry  
CIS Site Construction  
Projects Managed

Happy to discuss all types of work

07500 115177

craigkensett@btinternet.com

### FIONA'S FANCY FEET DANCE SCHOOL

CLASSES IN MODBURY  
AND KINGSBRIDGE

Scan the QR code



CONTACT FIONA ON

07800883367

FIONASFANCYFEET@GMAIL.COM

WWW.FIONASFANCYFEET.ORG.UK



### BIGBURY CAMPING BARN



Shake off the winter blues with an uplifting and revitalising spa day, available for your exclusive use.

Contact Cathy 01548 810079  
info@bigburyholidays.co.uk  
www.bigburyholidays.co.uk

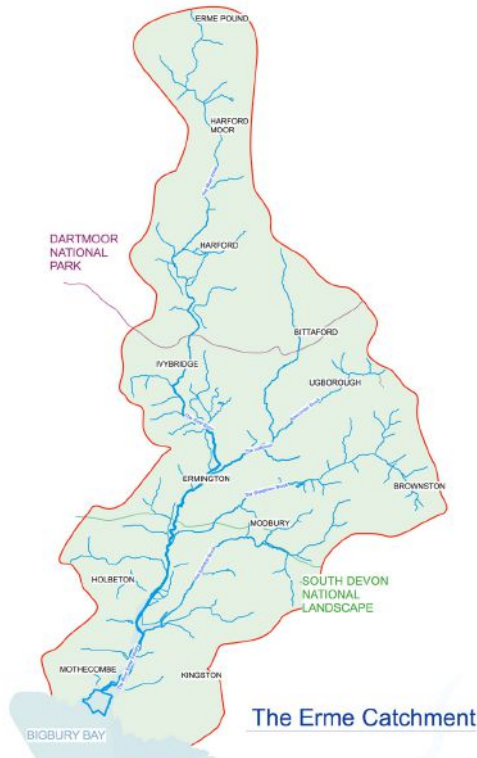
## How to Become a Wildflower Meadow Maker

Wildflower meadows are one of Britain's most threatened habitats, but they are also one of the most powerful tools we have for restoring nature. That's why WATER (Wild About The Erme River) and Devon Wildlife Trust are proud to introduce **Erme Meadow Makers**, a long-term initiative to grow a living network of meadow habitats across the River Erme catchment.



Think of meadows like a pearl necklace. Each meadow, however large or small, is a pearl: beautiful and valuable on its own, but far more meaningful when connected to others. Together they form a chain of habitat along which wildlife can travel, shelter, feed, and thrive. Bees, butterflies, beetles, birds, mammals and countless other species depend on these connections. Our goal is to add pearls to that necklace, and every landowner, farmer, and garden owner in the Erme catchment has a role to play. Any size of garden, field or farm is welcome.

The Erme Meadow Makers' initiative aims to connect fragmented habitats, boost biodiversity across the Erme catchment, and draw inspiration from the remarkable meadows that already exist here. There is so much we can learn from those who have already taken the plunge, and so much more we can achieve together.



**To mark the beginning of this journey, we're holding a free landowner and land manager drop-in event at Shilstone House Cafe on Thursday, 14th May 2026.** Lynne Kenderdine from Devon Wildlife Trust will be on hand to offer expert, confidential advice on wildflower meadow creation and restoration and any available grant schemes. Whether you manage an acre or a hundred, this is your opportunity to find out what's possible on your land. She is also able to offer seed collected from local meadows to be sown this autumn to help get you started.

**Bookable 30-minute advice slots** will be available for landowners within the Erme catchment (see map) from **10:30 – 13:00 and 14:00 - 15:00**, bookable via [Eventbrite.co.uk](https://www.eventbrite.co.uk) and search Erme Meadow Makers Advisory Drop-in or visit [www.erneriver.org/news](http://www.erneriver.org/news) for the link. If you'd prefer to come along informally, or live outside the catchment there will also be a **free drop-in session from 15:00–16:00**. Bring along maps, photos, or any questions you have — no question is too small. **Members of the WATER team will also be on hand throughout the day** to talk about the wider work happening across the Erme catchment, answer questions, and share how you can get involved with the river's recovery.

Nature recovery in our catchment starts with us. Come and be part of it.

[erneriver.org](http://erneriver.org)

**Rebecca Kikkides and Charlotte Rathbone on behalf of WATER.**



[www.let-it-out.co.uk](http://www.let-it-out.co.uk)

*The flexible approach  
to letting your holiday home*

Gail Critchlow  
07889 628514

Liz Baker-James  
07388 673228



# Modbury Parish Council Meeting

Tuesday 7<sup>th</sup> April 2026, 7:00pm MARS Pavilion



**MODBURY**  
PARISH COUNCIL

Present were seven councillors. Apologies were received from Cllr Louise Wainwright (Devon CC), and Cllr Bernard Taylor (South Hams DC); two members of the public were present.

## Devon County Council Report by Louise Wainwright

- LW has published her annual report which is available for download from the MPC website.

## Matters arising from the minutes of the last meeting

- DCC funding for maintenance equipment: no more funding is available,, but our application will be considered in the next financial year.
- The lease between MPC and the Modbury Recreation and Sports Trust for the Recreation Ground and QEII Pavilion has been signed as from 1<sup>st</sup> April 2026.

**Planning:** Palm Cross - Public meeting re Bloor Homes development: A report has been written on the meeting and is available on the MPC website and on p. 19 of this Modbury Messenger. Options for action discussed were getting our own traffic report, contacting the Local Government Ombudsman, and funding a judicial review. The report has been forwarded to involved parties and MPC is considering options for a professional traffic report. It was considered that a judicial review was too expensive a risk, and even if successful, would only overturn the present SDHC decision and the planning application would go back before SHDC again. Our local MP cannot get involved in a specific planning issue but has been approached to discuss the wider implications of the effects on Neighbourhood Plans.

## Health & Safety

- Play areas – issues in the play areas have been resolved.
- Road warden scheme – work must not take place on the A-road through Modbury.

## Devolution

- MPC hosted a forum on the issues and options of a change to unitary councils within Devon. MPC have submitted a paper on the subject which is available on the MPC website. Louise Wainwright was congratulated on the work she is doing on the subject.
- SHDC have discussed asset transfer before they are dissolved. In Modbury, there are some areas worth considering: the Millennium Meadow; the Fullers Ope grass and Patch; the Galpin Street community orchard; the hedge and pathway along Barracks Road. It was decided to apply to take over those assets.

## Maintenance

- Potholes – MPC have produced a map (available from the website) of all 188 potholes filled in by the Road Warden team in the year 2025/26. Dealing with these early has prevented our roads getting much worse.
- P3 scheme – this is the scheme under which MPC look after the public footpaths within the parish. There have been issues with DCC communication and funding but these have now been resolved and we can move forward with training and work with our team of seven volunteers.

## Community Engagement Working Group

- Progress is being made on signage etc within the town on making it Dementia Friendly.
- SHDC have had no response from the owners of the Baptist Chapel and are considering their options on action to deal with its deterioration. Members of the public are welcome to comment directly to SHDC.
- SHDC community awards went to Modbury Lunch Club, Colin Whybrow and Nigel Toms.
- A meeting on youth provision within Modbury has been organised.

Date of next meeting: Tuesday 5<sup>th</sup> May 2026 @ 7pm

Tony Price

## Holbeton Film Club

May's film is **Ocean** (certificate PG). This is David Attenborough's personal statement about the Earth's oceans. We are screening this film one day after his 100<sup>th</sup> birthday, and **we will be joined by Marine**

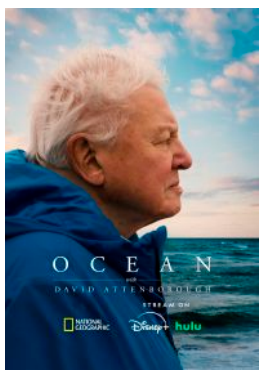
**Biologist Dr Richard Kirby**. We will start the evening with a 15-minute film on the oceans' smallest creatures that Richard made, narrated by David Attenborough. Richard will be answering questions after Ocean, and we will be celebrating David Attenborough's long and illustrious career.

This is screening on **Saturday the 9<sup>th</sup> May 2026** in Holbeton Village Hall. **Doors open 7pm. The programme starts at 7:30pm**. Tickets on the door are £4 for adults and £2 for children under 12 (card or cash). Ice creams are on sale for £1.

Our programme continues with:

Sing Sing, 15  
Ballad of Wallis Island, 12A  
I'm still here, 15  
I swear, 15

Friday 12<sup>th</sup> June  
Saturday 11<sup>th</sup> July  
Friday 14<sup>th</sup> August  
Saturday 12<sup>th</sup> September



01752 830274 [harryluson@gmail.com](mailto:harryluson@gmail.com)

Harry Baumer



**KIDS' CHURCH** - Kids' Church meets in Modbury Primary School. Parents, please drop off your Explorers (age 9+) and Discoverers (age 6-8) at the school from 9:15 am where they will be met by one of the leaders. After Kids' Church, the youngsters will be taken to St. George's to be with their parents at the end of the service. Climbers (age 0-5) will remain in St. George's, meeting their leader to be taken to the Lower Vestry. If you have any questions regarding Kids' Church, please contact Sara Chapman on [s.chapman@modburyteam.org](mailto:s.chapman@modburyteam.org).

For St George's Parish enquiries, contact Rev. Oli Long, Vicar 01548 732344.

	Service	Service Leader
May 3rd	Holy Communion and Kids' Church 9.30 am	Rev. Oli Long
May 10th	Holy Communion BCP 8.00 am	Rev. Oli Long
	All Age May Fair Service 9.30 am	Rev. Oli Long
May 14th Ascension Day	Holy Communion 11.00 am	Rev. Oli Long
May 17th	Holy Communion and Kids' Church 9.30 am	Rev. Oli Long
May 24th Whit Sunday	Sunday Worship 9.30 am	Rev. John Elliott
	Rooted 6 pm. A Service of Contemporary Worship	Rev. Oli Long
May 31st	Team Service Holy Communion 10.30 am	Rev. Oli Long

**CHRISTIAN COMMENT:** As I am writing this, the sun is streaming in through the window, the sky is blue, no rain, no strong chilly winds, just a feeling that at last, spring is here after the dull days of very changeable weather. There are primroses and bluebells in the hedgerows, and daffodils and other spring flowers in gardens. Posters for Flower Festivals are starting to appear - events where the flower arrangers have used their skills to display some of the wonders of creation, many of which had started off as lifeless, dried-up seeds ranging from tiny minute specks of dust to quite large grains. Yet when these seeds were sown in the soil, watered by the rain and warmed by the sunshine they burst into life to grow into fine plants. Often all this happens without any further input from the person who sowed them, although sometimes they may need a helping hand in the form of extra nutrients added to the soil, or the extraction of weeds which threaten to choke their growth.

Jesus used the growth process of seeds in some of his parables to illustrate the process of the growth of faith. For instance, he said that the Word of God, like the seed, grows in God's good time, which reminds us that we often never know what effect the evidence of our own faith can have on the people with whom we come into contact in our daily lives. Just as we don't know the effect of bringing a child to church for baptism will have on the members of the baptism party. It could be that during that service a seed of faith is sown in a person's heart, which later, in God's good time, will start to grow. And as another of Jesus's parables reminds us, that just as a minute mustard seed can grow into a big bush, so a tiny seed of faith could grow into something big.

When we think about it, aren't we, as individuals, very similar to seeds and plants? Just as the growth of a seed is influenced by the things around it, and the nurture it receives, so our development as individuals is influenced by the environment and the people around us. This starts in our childhood and continues throughout the whole of our lives. So how important it is that we affirm, encourage and support those around us! For instance, when we think that someone has done something well, why not tell them? When we know that someone is going through a rough time, why not offer help or support instead of assuming that their family, or someone else, is already supplying all their needs? Often it is the knowledge that people do care that can make all the difference to a person who is lonely!

Love and care for each other was one of the characteristics of the Christians of the early church, who were following the teaching of Jesus to love God and love our neighbour, treating them as we would like them to treat us. - and this is just as applicable to us now as it was back then.  
**Joyce Howitt**

**St Monica's Roman Catholic Church, Modbury**

No weekly mass at present

**St Austin's Priory Roman Catholic Church, Cadleigh**

Mass weekly at 11:30 am  
on Sunday

**Phone: 01752 895888**

**Web: [staustinsivybridge.co.uk](http://staustinsivybridge.co.uk)**





# History Corner

All the fun of the fair



FRIDAY 9th	SATURDAY 10th
10a.m. MEET AT SCHOOL FIELD FOR CHILDRENS SPORTS	THE MARKET With 115 EXCITING SELECTION OF STALLS, WITH Over 1000 "Burst into Life" at 10.00 a.m. In THE FOURWELL CARPARK
12:00 NETBALL	2:15 P.M. MILE RACE
MARVELLOUS MODBURY MUMS	START: BROAD ST. at 10.15 to 10.30
THE NIMBLE NEIGHBOURLIES	Classes: 1st Ladies 2/3 Ladies 4/5 Ladies 6/7 Ladies 8/9 Ladies 10 Ladies 11 Ladies 12 Ladies
1-2 PM Lunch in SCHOOL HALL	2:30 P.M. PRAM RACE
2:15 PM Filmshow in MEMORIAL HALL	WIDE COURSE at crossing near 3 Pubs & 4 Bkys! 1st 2nd 3rd 4th 5th 6th 7th 8th 9th 10th 11th 12th
7-7:30 MEET AT THE MEMORIAL HALL FOR THE TREASURE HUNT (ENTRANCE 10p) ON FOOT!	2:45 P.M. TUG O' WAR
FINDS AT MEMORIAL HALL FOR A CURRY SUPPER (ON SALLAD) SERVED FROM 8-10.30 P.M. BAR	Teams of six men or women.
SUPPER TICKETS (ADULTS 6.00 CHILDREN under 10p)	3:00 P.M. MAYPOLE DANCING
TICKETS FROM Mrs Wood, 2 Broad St, Modbury	BY THE BROTHERS
CLOSING DATE: 1st May	CALL 01392 5222 "BROAD ST." FRIDAY 9th



## Ivybridge u3a General Meeting

Monday 18th May 2026, 2.00pm at the Watermark Centre

Guest speaker will be Felicity Goodall who will talk about

### Lost Devon - Forgotten Stories from Devon's Past

Felicity, a freelance writer with a background in radio and newspapers, has a passion for history. She promises a fascinating insight into Devon's history, exploring what little remains of the past whilst discussing events that have formed the county of today.

The event is open to members and to those no longer in full-time employment who wish to find out more of what u3a has to offer,

## MODBURY MEMORIAL HALL AGM

The Trustees of the Modbury Memorial Hall wish to communicate that there will be an AGM for Modbury Memorial Hall held on Tuesday 5th May at 7.30 pm in the meeting room of the Hall. Residents of Modbury are most welcome.



Tree surgery & landscape management  
Contact us on 07793 056898

- Tree surgery
- Grass cutting
- Fence construction
- Planting
- Shrub pruning
- Hedge reductions
- Garden projects
- Regular maintenance

Working with commercial & domestic clients in the South Hams since 2012  
Fully insured to £5 million  
NPTC & RHS qualified

info@coastalgardenservices.co.uk  
www.coastalgardenservices.co.uk



Please come and try our new milk and milkshake vending machines at Bigbury on Sea

3 sizes of glass bottles available

Fresh milk and hand crafted ice cream from our organic cows

Open 24/7 - Please call in

Milk - Ice Cream - Eggs - Vegetables - Meat

Straight from the farm @mountfollyfarm

# MODBURY MAY FAIR

## CARNIVAL

SATURDAY 9<sup>TH</sup> MAY, 4PM

AHOY, FAMILIES!  
GATHER YOUR CREW, DRESS LIKE PIRATES, AND JOIN  
OUR CARNIVAL ADVENTURE!

MARCH TOGETHER OR SAIL IN STYLE ON A FLOAT-  
EVERY FAMILY CAN BE PART OF THE FUN.

THE MORE COSTUMES, THE MERRIER!

THIS YEAR, WE'RE REALLY HOPING TO SEE MORE  
ADULTS GETTING INVOLVED-FANCY DRESS IS WARMLY  
ENCOURAGED FOR EVERYONE JOINING THE CARNIVAL  
PROCESSION!

SPECIAL GUESTS  
THE NOSS WAILERS  
CROOKED TEMPO SAMBA BAND



SPONSORED AND ENTRY FORMS FROM MARCHAND PETT



# THE MODBURY MAY FAIR

☑ AHOY, ME HEARTIES! SET SAIL FOR A DAY OF FUN  
AND FOLLY! ☑

ON MONDAY 4<sup>TH</sup> MAY, FROM 10AM 'TIL 2PM, DROP  
ANCHOR AND JOIN US AT LOWER POUNDWELL FOR A  
SWASHBUCKLIN' CELEBRATION FIT FOR PIRATES,  
PRINCES, AND LANDLUBBERS ALIKE!

⚓ WHAT TREASURES AWAIT YE! ⚓

- 👑 THE ROYALTY CROWNING - WATCH AS NEW RULERS BE CROWNED BEFORE THE CREW!
- 🦆 THE GREAT DUCK RACE - CHEER YER LUCKY DUCK TO VICTORY ON THE HIGH SEAS!
- 🍷 CREPES - SWEET DELIGHTS TO KEEP YER ENERGY SHIPSHAPE.
- 🍕 WORLD PIZZA - HOT, HEARTY SLICES WORTHY OF A CAPTAIN.
- 🌮 COAST 2 COAST - HOG ROAST, HOT DOGS & VEGAN BURGERS FOR EVERY SAILOR ABOARD.
- ☕ SOUTH COAST COFFEE - A MUG O' FINEST BREW TO WARM YER BONES.
- 🍦 PETE'S ICE CREAM VAN - FROZEN TREASURE FOR SCALLYWAGS YOUNG AND OLD.
- 🧜 LIZZIE FLUID FACES - TRANSFORM INTO A FEARSOME PIRATE OR MYSTICAL MERMAID!
- 👩 HOLLY FRANCIS HAIR - GLITTER BRAIDS TO MAKE YE SPARKLE LIKE BURIED GOLD.
- 🥕 CRUNCHY CARROT - LEAP, BOUNCE, AND DANCE LIKE TRUE SCALLYWAGS AS THE TUNES PLAY AND THE DECK COMES ALIVE!
- 🎪 MAY POLE DANCING - TRADITIONAL FUN WITH MERRY PIRATES
- 🎲 FAIR GAMES - TEST YER SKILL AND WIN BRAGGIN' RIGHTS ACROSS THE SEVEN SEAS.

👤 BRING THE WHOLE CREW, DON YER FINEST PIRATE GARB, AND  
PREPARE FOR A DAY OF LAUGHTER, LOOT, AND LEGENDARY FUN.

ALL HANDS ON DECK - WE'LL SEE YE THERE! 🏴‍☠️



Carers Direct (SW) Ltd

Bringing Care To Your Home

Do you or a loved one need a little  
extra help?

WE ARE HERE TO HELP

Carers Direct SW Ltd is local not-for-profit care  
team of dedicated, well trained, friendly, local  
carers.

We can provide from one hour to 24-hour care.

Tasks undertaken include personal care, meal  
preparation, prompting medication,  
appointments and social outings.

Contact us for more information on:

01548 854358 or Email. [office@carersdirect-sw.co.uk](mailto:office@carersdirect-sw.co.uk)

You are welcome to pop in and see us at our office:

Unit 2N South Hams Business Park, Churchstow,  
Kingsbridge, Devon TQ7 3QH

CARERS DIRECT (SW) Ltd

Book a slot!



## MEN'S BREAKFAST

SATURDAY 16<sup>TH</sup> MAY | 9AM  
FULL ENGLISH WITH TOAST, TEA/COFFEE

in the  
White Hart  
Assembly  
Room

"On a wing  
& a prayer"

GUEST  
SPEAKER

Jonathan Atkinson  
Mission Aviation Fellowship

£15

book a place with simon franklin 01548  
830071 email: [sfranklin@btinternet.com](mailto:sfranklin@btinternet.com)

Organised by St George's Church

# MODBURY MAY FAIR ROAD CLOSURES ROAD TRAFFIC REGULATION ACT 1984, SECTION 16A THE COUNTY OF DEVON TEMPORARY PROHIBITION OF THROUGH TRAFFIC

No person shall cause or permit any vehicle to proceed on the sections of Affected Roads except for access to land or premises on or adjacent to those length of roads.

NOTICE is hereby given that Devon County Council has been approached to make the above titled order live as per the dates below. It is planned that this will be invoked as follows:

## Monday 4<sup>th</sup> May 14:00h - 15:00h

Town Centre (Palm Cross Green - Galpin St), Brownston Street, Dark Lane, Barracks Road closed to all traffic -  
Modbury Mile Fun Run Road Races 14:00h -15:00h

## Saturday 9<sup>th</sup> May 07:00h - 14:30h

Poundwell Street Closed 07:00h – 14:30h From Post Office – Bottom of Short stay car park.  
Access to Poundwell from 07:00h on Saturday via Church Lane & Bunker Hill only

## Saturday 9<sup>th</sup> May 15:00h – 17:00h Carnival Parade

A379 Town Centre (Palm Cross Green - Galpin St) 16:00h -16:30h Brownston Street, 16:00h – 17:00h, Dark Lane,  
16:00h – 17:00h, Barracks Road 15:00h – 16:30h

## CAR PARK CLOSURES

APPLICATION HAS BEEN MADE TO SOUTH HAMS DISTRICT COUNCIL TO CLOSE THE CAR PARKS AS FOLLOWS: -

### Monday 4<sup>th</sup> May 2024

Poundwell Lower Long Stay Car Park closed for May Fair Opening Ceremony  
closed from 06:00h on 4<sup>th</sup> May until 14:00h

### Friday 8<sup>th</sup> May - Saturday 9<sup>th</sup> 2024

Poundwell Short Stay Car Park closed for May Fair Market from 18:00h on 8<sup>th</sup> May until 15:00h  
on 9<sup>th</sup> May

---

## MODBURY PARISH COUNCIL

Modbury Parish Council Office, 1 Modbury Court, PL21 0QR  
Tel: 07467134225 email [parishclerk@modburyparishcouncil.gov.uk](mailto:parishclerk@modburyparishcouncil.gov.uk)



### Your Councillors are:

Bill Cole	01548 830913	
Chris Field	07836 592854	<a href="mailto:chrisfield@modburyparishcouncil.gov.uk">chrisfield@modburyparishcouncil.gov.uk</a>
Barbara Price (Chair)	07739752095	<a href="mailto:barbaraprice@modburyparishcouncil.gov.uk">barbaraprice@modburyparishcouncil.gov.uk</a>
Tony Price	07801837129	<a href="mailto:tonyprice@modburyparishcouncil.gov.uk">tonyprice@modburyparishcouncil.gov.uk</a>
Phil Smith (Vice Chair)	07759282404	<a href="mailto:philsmith@modburyparishcouncil.gov.uk">philsmith@modburyparishcouncil.gov.uk</a>
Dave Trigger	07808742372	<a href="mailto:davetrigger@modburyparishcouncil.gov.uk">davetrigger@modburyparishcouncil.gov.uk</a>
Ann Turner	01548830606	<a href="mailto:annturner@modburyparishcouncil.gov.uk">annturner@modburyparishcouncil.gov.uk</a>
Sarah Wyatt	07794 662903	<a href="mailto:sarahwyatt@modburyparishcouncil.gov.uk">sarahwyatt@modburyparishcouncil.gov.uk</a>

**How can we help you?** Councillors run drop-in surgeries on Sat. 10:00 - 11:00 am in the Parish Office at 1 Modbury Court. The Parish Clerk is in the Parish Council office on Tues & Wed, 10:30 am – 5:00pm. Call into the office, phone, email or come along to our meetings at 7:00 pm in the Pavilion, QEII Recreation Ground on the first Tuesday of every month and speak in the public forum.

<b>Devon County Councillor (Salcombe Division):</b>	Louise Wainwright	Tel: 07908 525663 <a href="mailto:louise.wainwright@devon.gov.uk">louise.wainwright@devon.gov.uk</a>
<b>South Hams District Councillor (Charterlands Ward):</b>	Bernard Taylor	Tel: 01548 830844 <a href="mailto:Cllr.Bernard.Taylor@southhams.gov.uk">Cllr.Bernard.Taylor@southhams.gov.uk</a>



# MODBURY MAY FAIR 2026

## 30th April - 11th May



## MODBURY TAKES TO THE HIGH SEAS!

A Royal Charter to hold an annual nine-day Fair was granted to Modbury in 1329 by King Edward III. The Charter was read by the Portreeve on May 3rd, eve of the old St. George's Day, to announce the start of the Fair and allowed that the people had the right to free trade and to sell liquor without a licence. This freedom was symbolized by the Glove, which, on a pole with flowers, was first hung on the Market Hall, then the Bell Inn on Broad Street. The Town Crier reads the Charter and the Glove is hung there on the same building every year.

Modbury's own Town Crier, David Scott, will officiate and herald events throughout the Fair.

### **Pirates! A Music Hall has been postponed**

## Saturday 2nd May

### **Registration for Monday's Events – 10am–1pm At the Mewstone shop in the Old Bank, 13 Broad Street**



#### **Modbury Mile Fun Run registration**

Secure your place and collect your number for the run on Monday afternoon - see next page for details. Entry fee £2 pp for all. You can also register at Modbury School and on the day.



#### **Duck Race - Buy your duck for £1**

or in various shops all week or on the day in the Lower Poundwell Car Park.

Prizes for 1st, 2nd and 3rd places

The race is on Monday - see next page for details.

Be aware that access to the stream and duck race, which is in the Meadow, is via a stone stile, and is unsuitable for wheelchairs and pushchairs.

## Sunday 3rd May

### **May Fair Treasure Hunt – start from 1pm-2.30pm**

A treasure hunt for adults and another for children in a gentle, enjoyable stroll around town.

Collect your forms after 1pm in the Upper Poundwell courtyard.

Fee £1 for adults and 50p for children. Return forms by 4.00pm to the Church.

### **Afternoon Teas by St George's - from 3.00pm in St George's Church**

Indulge with a traditional Devon tea (squash and gluten-free cake available).

**Any questions about May Fair 2026?  
Please email [pipainsworth@btinternet.com](mailto:pipainsworth@btinternet.com)**



## Monday 4th May



### **Crowning Ceremony with entertainment for all - 10am-2pm Lower Poundwell Car Park**

Old-fashioned **fairground games** through the morning; Crunchy Carrot bouncy castle plus; Lizzie Fluid Faces; Holly Francis Hair for glitter braids. **Live Music and Maypole Dancing!**

#### **10.30am Crowning of the May Fair Royalty,**

Queen Maisie Palmer and King Charlie Walker, attended by Princess Martha Smith  
Reading of the Charter by the Town Crier and Hanging of the May Fair Glove.  
Announcement of May Fair Community Grants.

**10.15am-12.00pm Mile Fun Run register** & collect your number, entry fee £2 pp

**10.15am-12.00pm Buy your ducks** for the duck race

**Food Galore:** World Pizza; South Coast Coffee; Hog Roast, Hot Dogs & Vegan Burgers;  
Pete's Ice Cream; Modbury Twinners Crepes

### **Duck Race - 12.30pm**

Prizes for 1st, 2nd and 3rd places

Buy your duck for £1 from local shops or on the day in the Lower Poundwell Car Park

Be aware that access to the stream and duck race, which is in the Meadow,  
is via a stone stile, and is unsuitable for wheelchairs and pushchairs.

### **The Modbury Mile Fun Run - 2.15pm**

A fun event for all the community starting and finishing at the bottom of Galpin Street.

Adults and teenagers compete in the first race, children in the second  
(minimum age 5y, children under 8y must be accompanied by an adult).

With 14 categories from school *Key Stage 1* to *over 50 years*.

**there is something for everyone.**

Trophies for the winning runners in each age/gender category

**PLUS medals** for *all runners* and gold/silver/bronze for the top 3 in each category

**PLUS prizes** for the best-dressed adult & junior runner in line with this year's theme (pirates).

There will be no official timing ... **because it's fun!**

The Modbury Mile is sponsored by Luscombe Maye Estate Agents



### **Quiz at the Exeter Inn - 8.00pm**

£2pp entry, plus £10 for a meal (food served beforehand from 7.00pm).

Maximum team size is 6, no minimum.

Contact the Exeter Inn on 01548 831225 to book a table in advance.

Cash prize for the winner and the usual superb raffle prizes.



### **Open Darts Tournament at The Club - 7.30pm**

Open to all, £2 entry. Register by 7.00pm.



## Wednesday 6th May

### **Dog Show – 6.30pm – Memorial Hall Courtesy of South Moor Vets**

**Categories:** Best Puppy (under 18 months); Golden Oldie (over 7 years); Best Rescue; Best Crossbreed; Best Pedigree; Best Fancy Dress; Waggiest Tail; Child's Best Friend.

Best In Show: all class winners will automatically be entered.

**Entry is £1 per Dog per class**

Best Pet Portrait Art Competition - entries are FREE and winners will be displayed at South Moor Vets after the show

Contact South Moor Vets for more info and to register your Dog for this year's show.

***You must pre-register, otherwise you may not be able to enter on the day!***

South Moor Vets 01548 830210 ; modbury@southmoorvets.co.uk

### **Acoustic Music Night at the White Hart – 8.30pm**

Bring along your guitar or other acoustic instrument or just your voice and join in with the tunes and singing. Or come along to listen.



## Thursday 7th May



### **Cub Scout Beetle Drive – QE2 Pavilion – 6pm-7.45pm**

1st Modbury Cub Scouts invite you to join in a fun-filled evening.

Prompt start at 6.00pm. £2 entry fee.

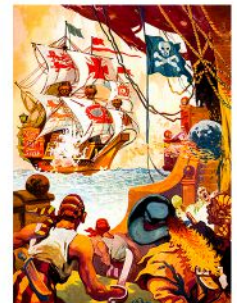
KS1 children need to be accompanied.

### **Modbury Gospel Singers – St George's Church - 7.30pm start**

Modbury Gospel Singers will be entertaining you with their Sound of Gospel Music

**Free entry.** Doors open at 7pm.

Bring your wallets for the cash bar and donations to Modbury May Fair, and your hearts for a fun night of music for all ages.



## Friday 8th May

### **Exeter Inn Senior Residents Lunch: 12 pm**

£12.50 for two courses; book your place by calling 01548 831225

### **Bingo at the Memorial Hall - 7.15pm**

Organised by Modbury Brownies. Doors open 6.45pm. A simple, fun game of chance for all the family. Bring your own bingo dabbers and buy your games at the door.

Prizes to be won. Refreshments available.

## Saturday 9th May

### **May Fair Market in Upper Poundwell Car Park 9.00am – 1.00pm**

**Opened by our Royalty, Modbury's annual street market with a superb array of crafts, goods, produce, games, and ever-popular plant stall.**

**1st Modbury Scouts will be serving bacon rolls!**

*To book a stall email [pipainsworth@btinternet.com](mailto:pipainsworth@btinternet.com)*

*If you can help to put up (6-7pm Friday) and/or take down (1-2pm Sat.) the market stalls please contact Tony Price - 07801 837129 [tp@lordprice.com](mailto:tp@lordprice.com)*

### **Art @ The Hart 9.00am – 1.00pm**

Beautiful artwork on display and for sale upstairs at the White Hart. Watercolours, oil paintings, paper art, prints, photography, gifts and much more. All created by local artists.



### **Shop Window Competition Judging – 10.00am**



### **Carnival Procession - 4.00pm - 5.00pm**

Judging from 3.15pm, this will start from the Memorial Hall and thence down Church Street, with the wonderful Crooked Tempo Samba Band and the Noss Wailers, returning via Brownston Street and Dark Lane.

Entry forms from Marchand Petit to be returned, to them, no later than the 30th April.

**Display of Vintage cars & tractors 2.00pm to 3.30pm by Long Park.**

**The vehicles will then join the parade at 4pm.**

*If you are not a member of the **Devon Vintage Car Club**, but wish to include your car, please email [mike.oakins@gmail.com](mailto:mike.oakins@gmail.com)*



**A swashbuckling' celebration for pirates, crew and landlubbers all**

**Fancy dress - the more costumes the merrier**

*The Carnival sponsors are Marchand Petit Estate Agents*

### **CEILIDH - 7.00pm - 11.00pm at the Memorial Hall**

Do come and enjoy our fabulous evening of fun and dancing, with instructions by our wonderful callers Rod and Jac Denley-Jones.

£15 to include food; licensed bar (not BYO)

**Tickets available from **Ringrose** in Broad Street**

## Sunday 10th May

### **May Fair Service at St George's - 9.30am**

The May Fair King and Queen will be joining us and we invite everyone in the community to come along and give thanks for the Modbury Fair, and the week of fun we will all have had.

Everyone is welcome at this all-age service; please stay to enjoy refreshments afterwards.

### **Modbury History Walk – 1.30pm**

Join Tony Price (and Alfie) for a one-hour (or so) stroll around the centre of town with an insight into its long and fascinating 1,000 year (and more!) history.

Numbers have to be limited, so please email [tp@lordprice.com](mailto:tp@lordprice.com) to book a slot.

**The Modbury May Fair has its own Facebook page:**

**search on FB for *Modbury May Fair***

**and join the group for details and updates.**

## SUMMARY NOTES

**Attendance:** Parish Clerk plus 6 MPC councillors, District Councillor, 65 residents of Modbury, one other (camera operator).

**Representations:** Two written representations from persons unable to attend.

The meeting opened with an introduction from Cllrs Barbara Price and Ann Turner outlining the proposal, the decision of SHDC planning committee and the position of Modbury PC. Handouts summarising the process and current situation were distributed to those attending (following this).

### Access

- a. There were numerous concerns about access, both vehicular and pedestrian.
- b. Exiting and entering the A379 at Lanveoc Way is already hazardous. Visibility is poor with parked cars when entrancing the estate and speed of traffic when joining the main road.
- c. At least three recent incidents were referenced but members of the public recounted many other incidents and near misses. The entrance sign to Lanveoc Way was damaged by a lorry.
- d. There was discussion about how to record incidents to reflect the actual experience of residents. Police will only attend if there is injury or obstruction, but other incidents are not recorded.
- e. The amount of traffic is already too busy for the entrance and narrow roads within the site. A Bloor representative said that the roads are narrow to serve as "traffic calming".
- f. Children should be able to play safely on the green. The area is already busy with cars flying around. More traffic will increase the risk. A serious incident is certain to happen.
- g. We could perhaps ask the bus company drivers what their issues have been. Note that Bloor promised to put up that bus stop but didn't do so.

### Emergency Access

- a. Access for emergency vehicles was a general concern. Emergency access was supposed to be in place for Phase 1 of the Palm Cross development. This was not done.
- b. A member of the audience who is an ex Fire Service Officer stated that with the current layout, the fire service would struggle to attend the site.

### Pedestrian Access

The proposed pedestrian access onto Sheepharn Road and to the QE11 Recreation Ground is very dangerous. Children are most likely to use this route to get to the recreation ground.

Vehicles come at speed up to the brow of the hill, this is particularly an issue in the summer with increased holiday traffic and farm vehicles.

### Construction Traffic.

- a. Where is the plan for managing construction traffic? This is something which could go on for around 3 years. The roads are poorly laid, that is why they have not been adopted. how are they going to stand up to heavy construction vehicles?
- b. What about provision for residents parking during the construction phase?
- c. There will be issues for residents with pollution and keeping children safe.
- d. House values at Palm Cross 1 & 2 will be affected.

### Performance of Bloor Homes

- a. After nearly 6 years, the poorly laid roads have still not been adopted.
- b. Bloor do the bare minimum of essential work and that is poorly done. They should not be given the opportunity to repeat the failure of previous schemes.
- c. Why should we trust Bloor to do anything they promise, they have still not completed the undertakings on the previous developments.
- d. Pedestrian access from Palm Cross to the school is inadequate and dangerous.

### Neighbourhood Plan

- a. There was general unhappiness that after so much effort a key part of the NP was being discarded.
- b. Proposals for the number of affordable homes was not kept for Phase 1 and 2  
The proposal is for 30% affordable homes on the new site. If the NP boundary counted, it would be an exception site so would have had a higher percentage of affordable homes.
- c. Why was this site even considered since it is outside the Neighbourhood Plan boundary? On a vote of 9 councillors there were five abstentions, two against, two to vote for, the chairman used his casting vote for, there were questions about a failure of process.
- d. Is there redress against SHDC for not making it clear that the changes to the NP boundaries no longer counted?
- e. **Point of information:** MPC have communicated this issue to the rest of the Councils within SHDC.

*Continued on next page*

*Continued from previous page*

### **Decision making process**

- a. Unhappiness about the procedure of the SHDC committee hearing was a recurring theme (see comment above). The voting numbers showed how divided the committee was. Were two votes a fair representation of the committee?
- b. As the purpose of the meeting was to discuss access, DCC Highways Officer should have been there to answer questions. If he couldn't be there, the hearing should have been deferred.
- c. The point was made that MPC should challenge the decision AND process.
- d. Is there an option to contact the Local Government Ombudsman re the conduct of the meeting
- e. A separate highways report by MPC would be useful. So far, comments are made by those accepting that this will happen, but it has not yet been approved. Pedestrian safety is more important than traffic.
- f. There is a petition circulating to be sent to SHDC.
- g. Every resident has the power individually to lobby the councillors.
- h. **Point of information:** Representations should be sent to SHDC quoting the Planning Reference Number at the top of the page. Specific issues about traffic and road safety should be directed to DCC Highways Officer.

### **Infrastructure:**

- a. What are provisions for water and sewage to the new site as the current water treatment plant is inadequate? Point made that it can't cope! The holding tank at Palm Cross does not function properly. The impact on the existing system has not been thought through.
- b. The health centre is already at full capacity.
- c. To afford any homes, most families will have to work, meaning that most houses will have two cars – will there be sufficient parking spaces?
- d. A proposal for homes suitable for retired people should be made but has not.
- e. MPC should put up on its website details, or at least a link, to the relevant SHDC councillors and the minutes/video of the planning meeting.

At the conclusion of the meeting there was general applause to show appreciation to MPC for organising the meeting.

**Ann Turner**

---

## **Handout: Notes for public meeting 20/03/26**

### **South Hams District Council Planning meeting 15th January 2026 to determine 4116/24/OPA (Bloor Homes outline planning application (access only) for 75 homes)**

**Proposed site:** Land adjoining the current Palm Cross estate. The plan is for access through Higher Green Park and Lanveoc Way on to the A379

The Highways Officer from DCC submitted a report supporting the application but was not present at the meeting. There was no plan submitted by the applicant for management of construction traffic.

**Modbury Parish Council objected** on grounds of safety of access and development outside the agreed settlement boundary as shown in our Neighbourhood Plan. (Correspondence on PC website).

Last year, the PC had been told by SHDC that communities with current Neighbourhood Plans were protected from development outside the agreed settlement boundary. At the meeting, we were told that the settlement boundaries in NPs no longer applied so were not protection against development. We only learned about the change of advice at the meeting.

**Planning Decision:** The application was passed by a casting vote from the Chair, with 5 abstentions.

Modbury Parish Council has appealed against the decision. (letter on PC website)

**Representations:** This is still a live application so remains open to further representations. These should be sent to SHDC Planning Portal.

### **What has changed and why does it affect us?**

The government has a target of 1.5 million new homes across the country. It believes that the planning process is too drawn out and is obstructing development. Local councils are now obliged to find extra land for development and to approve applications unless there are major issues.

The Joint Local Plan has been scrapped; a new plan will not be in place for several years.

Neighbourhood Plans settlement boundaries can be disregarded although other NP polices remain in place.

The immediate consequence is that the Local Planning Authority (SHDC) is under pressure to pass this application. The system is weighted in favour of development.

**Continued on next page**

Wider consequences of removing local protections are that this leaves communities vulnerable to opportunistic development rather than building homes where they are needed.

Modbury Parish Council is taking legal advice and has written to all other parish councils with Neighbourhood Plans to alert them to the issue. We will continue to communicate with SHDC to represent the views of the community.

### Planning structure:

National Planning Policy Framework (NPPF) Dictated by national government policy. Sets out regulations and targets for development across the country. New NPPF produced in 2024

Local Planning Authority (LPA) In our case this is South Hams District Council. Review and make decisions on local planning applications. Must conform to the rules in the NPPF.

Parish Councils. Consider local planning applications and report to the LPA but do not have decision making powers.

Devon County Council Highways Department (DCC) Advise the LPA on road safety aspects of planning applications.

Joint Local Plans (JLPs) Covers South Hams and West Devon. Sets out aims for the whole area on a range of issues, especially location and amount of development.

Neighbourhood Plans (NPs) Produced after consultation with local community. Sets out the settlement boundary to contain development within an agreed area. It contains policies and recommendations for development, environment, community facilities A legal part of decision making process.

### On Behalf of Modbury Parish Council

## MODBURY TENNIS CLUB

April 2026 to March 2027 Memberships. New Memberships and renewals are invited for the year commencing 1<sup>st</sup> April.

Join your local tennis club and have access to the all-weather courts 52 weeks a year right on your doorstep.

Family	£60.00 pa
Single	£40.00 pa
Junior & student (over 12 yrs)	£25.00 pa
Child (under 12 yrs)	£ 5.00 pa

- Coaching available for all age groups;
- Friendly Club Sessions Thursday afternoons & Sunday mornings (free to members);
- or just play whenever you wish to.

Full details & Application Form available at [www.clubspark.lta.org.uk/ModburyTennisClub](http://www.clubspark.lta.org.uk/ModburyTennisClub)

Or, contact: [info@modburytennisclub.uk](mailto:info@modburytennisclub.uk)

Or, Chairman 07968 777141

AND INTRODUCING **THREE FREE TASTER SESSIONS** ... we're calling it **"HIT & HOPERS"**

For those of you that haven't played for a while, or simply want to give tennis a try.

We can provide racquets and balls if you don't have your own.

You **don't have to be a Member**, just come along to any 3 of the following dates:

Thursday evenings 6:00 - 7.00pm : 23<sup>rd</sup> & 30<sup>th</sup> April & 7<sup>th</sup> May

Friday mornings 10:00 - 11.00am : 24<sup>th</sup> April, 1<sup>st</sup> & 8<sup>th</sup> May



## Modbury Branch Royal British Legion

The next Meeting of the Modbury and District Branch of the Royal British Legion will be our next Business Meeting on Wednesday 3<sup>rd</sup> June at 7:30pm in The Club. All are welcome.

*David Scott*



## Modbury History Society

The next meeting of Modbury History Society will be held at 7:30pm on Tuesday, 12<sup>th</sup> May 2026 when Jon Bell, an Exeter Red Guide returns to talk about **'Tales of the Land and Songs of the Sea'**.

The History Society meets at the QEII Pavilion in Chatwell Lane, Modbury PL21 0FS where there is ample parking. The current series of eight lectures started in September. Membership of the society is £20 per annum but guests are welcome to attend individual meetings for a fee of £5.

Please look at the Modbury Heritage website, which is a comprehensive database with a wealth of information about the town including historic photographs, a walking guide and parish records of use to family historians. [www.modbury-heritage.co.uk](http://www.modbury-heritage.co.uk)

For further information please contact [rosiejaneparker@gmail.com](mailto:rosiejaneparker@gmail.com)

*Rosemary Parker*

## MODBURY HOP

### Lindy Hop Dance Classes



## Thursdays

7.30-8.30pm

8.30-9.30pm

Beginners Class

Improvers Class

£8 each class: £10 for both

White Hart Hotel, Modbury PL21 0QW

For further information call Heather on  
07876522934

# BELL RINGING COMPETITION



SATURDAY 9 MAY

## ST LAWRENCE'S CHURCH, BIGBURY

COME AND LISTEN TO SOME OF THE  
COUNTY'S BEST BELL RINGERS  
BETWEEN 2-6 PM

REFRESHMENTS SERVED

## AUNE VALLEY IN MODBURY

6 Church Street, Modbury



Free Local Delivery\*

\*Terms & conditions apply.

10%  
Off  
with this advert\*

Bring this with you to receive 10% off in the shop or  
café. Terms & Conditions Apply

[www.aunevalleymeat.co.uk](http://www.aunevalleymeat.co.uk)

## Retirement - Thoughts on Fibromyalgia

As I retire at 84, Wendy and I would like to thank Modbury for the life we have had here for the last 20 years.

As a GP in Plymouth specialising in musculoskeletal medicine, I was confused 35 years ago by the new diagnosis of Fibromyalgia. With its multiple symptoms and normal tests, surely it was not a physical diagnosis. To diagnose it the physician had to find a set number of "trigger points" – tender areas of muscular spasm.

The problem was very few GPs could feel these points, and I was not even sure if I had ever seen a case.

Chronic or recurrent pain often seemed to be a precipitating cause for Fibromyalgia. Often it is combined with chronic fatigue and the combination of the two is known in the UK as Yuppie Flu. The one associated symptom that did stick out like a sore thumb to me was Floppy Mitral Valve (a weak heart valve). A diagnosis that could not be more physical!

The penny dropped for me when a colleague pointed out that half of patients ending up in chronic back pain clinics started life as being hypermobile (double-jointed) – they had stretchy ligaments and tendons caused by abnormal collagen (fibrous tissue). These same people often had fibromyalgia, and they often had relatives with onset of back pain at an early age, and fibromyalgia.

My concept is that those with hypermobility are likely to have weak discs and weak associated spinal ligaments. As with other joints in the hypermobile body, they sprain easily. The difference with discs is that all 33 of them have an exiting nerve on each side. If the discs and associated ligaments are frequently sprained there is recurrent inflammation of these areas with recurrent pain and muscular spasm due to irritation of these nerves. It is recognised that if you irritate a nerve too much it reaches a point where it starts firing off with increasing ease and becomes a cause of pain with minimum provocation.

Thus you have a mechanism whereby hypermobility can cause recurrent back ache (often at a young age) leading to hypersensitivity, and to the muscle spasms from which fibromyalgia derives its name.

After retiring from general practice, I travelled weekly to the London College of Osteopathic Medicine for a year to become an Osteopath. I acquired the ability to feel the trigger points, but also learnt Jone's Technique (Positional Release). This involves treating tight muscles by holding them in a relaxed position for 90 seconds.

After returning to Plymouth, I ran NHS back-pain clinics for a decade, including a chronic back-pain clinic. Here I saw patients that had not been cured after six months treatment. Many of these patients were hypermobile and had fibromyalgia. Often they had relatives similarly affected.

Patients with long term fibromyalgia symptoms including hypersensitivity and chronic fatigue (sometimes to the extent that they are in wheel chairs) are very difficult to cure.

There is more hope if the process is recognised before "deconditioning" has set in. Deconditioning occurs when pain causes lack of exercise to the extent that supporting muscles wither, and exercise itself hurts.

My treatment of fibromyalgia involves strict disc care, with treatments aimed at relaxing trigger points, and strong emphasis on trying to keep active – "not too little exercise on a bad day, and not too much on a good day".

There have been calls to channel funding into explaining the causes of such an ill-understood condition, a condition that can become disabling. My concern is that the association with hypermobility and disc damage may not be realised. This is compounded by the fact that many physiotherapists are not keen on the idea that disc damage is a major cause of back pain.

Finally, although comprising nearly 20% of GP consultations, musculoskeletal medicine is poorly taught and funded. Doctors with interest in the subject are channeled into the much more lucrative world of sports medicine.



# FGS

## FLINT GARDENING SERVICES

Hello, I'm Tom Flint.

I'm happy pruning shrubs, tackling congested perennials or waging war on weeds.

I love working with people to create beautiful, manageable gardens full of life and colour, with a team of hardworking, knowledgeable gardeners on hand to help.

We work *with* wildlife, helping nature flourish and do the work.



- RHS qualified with 20 years of experience
- Planting, pruning, digging, weeding, hedge work
- Fully insured
- NPTC insured and qualified for chainsaw work
- Based in Modbury, full references available



Please call me on 0785 232 6786, send a Whatsapp or email [tpcf.flint@btinternet.com](mailto:tpcf.flint@btinternet.com)



## Modbury Wins Multiple South Hams Community Awards

South Hams District Council held their third annual Community Awards, lunch and presentation ceremony at Follaton House on Thursday 26th March. Introducing this year's awards Chairman Cllr. Bernard Taylor said "this year had seen the largest ever number of nominations from across the South Hams".

Modbury Parish Council supported nominations for the awards in several categories, and we are proud to announce that Modbury had three award winners.

Modbury Lunch Club was the winner in the Community Organisation category for their tireless commitment, over three decades, to providing a freshly-cooked lunch once a month for seniors in Modbury. The award was presented to long serving stalwarts and kitchen cooks Carole James and Marlene Winch on behalf of the volunteer team, some of whom were there to celebrate. The social and wellbeing benefit of this monthly get together is as much of an attraction as the superb meals. Those who cannot



make it to the Memorial Hall under their own steam are collected from their front door and safely delivered home afterwards by volunteer drivers.

Highly Commended in the Community Champion category was Nigel Toms, Modbury's first responder whose prompt response in medical emergencies is always accompanied by a calm efficiency and reassuring presence. Nigel has also carried out defibrillator training for members of the community to ensure that knowledge of that vital lifesaving technique is shared as widely as possible.

Highly Commended in the Climate and Biodiversity category was Colin Whybrow for his numerous volunteering activities that include brightening up Modbury with floral planting, working with the Modbury Community Orchard Group which now manages three community

orchards and holds the well-established autumn Apple Day and January Wassail events. He is a Trustee of the Wild About The Erme River (WATER) charity that is restoring water quality and habitat to our local river.

In an unlikely piece of happenchance, Colin took the opportunity to warmly congratulate Nigel and say a deeply felt personal thank you. It was Nigel's speedy response back in 2013 that had bought him enough time to be blue lighted into the emergency arrivals bay at Derriford where he then needed the defibrillator to bring him back from cardiac arrest. The cardiac theatre team were already waiting and 48 hours later he was home.

**Cllr Ann Turner  
Modbury Parish Council**



# The Modbury and South Hams Creative Writing Group

The Modbury and South Hams Creative Writing Group meets every month to read and discuss our work.

Below is a submission which one of our members brought to our last meeting. The theme was 'A Reworking'. This poem was written in another poetry workshop, but Lucy revised and restructured it for our meeting.

We are keen to welcome new members, so if you enjoy creative writing, why not join us. We meet on the first Saturday of the month at the Queen Elizabeth II Pavilion in Modbury at 10.00am.

[www.facebook.com/modburyc creativewritinggroup](http://www.facebook.com/modburyc creativewritinggroup) or call 07767 393802

## At Spring Equinox -A Child that Can Name Such Things

At light-crack, I walk out  
Among the back-lit filigree  
Of twiggy frames.  
The moon low and fading -  
Her time no more,  
My track marked out in dewy prints.  
Suddenly - a ricochet of hammering!  
Somewhere a woodpecker!  
Eyes scan minutely above,  
But all is solid torso of beech.  
I stand and stare,  
Stand and stare.  
Dead still.  
There at last - an infinitesimal shift  
Of black and white  
and flash of red -  
A Lesser Spotted Woodpecker!  
Beady eyed in Ladybird Book perfection.  
Once again I am the child  
That can name such things!

At dark hush, I walk out  
Among the drawings-in  
Of cloaking shadows.  
The moon high and rising -  
Her time once more,  
Glistening my path in ghostly glimmer.  
Through the pooling silence,  
As if voicing a magic chant,  
Ethereal callings, callings,  
Of Tawny Owl.  
There a reply!  
No chance of seeing;  
I stand and listen  
Each echoing the other.  
The Owl and the Pussy Cat,  
The Owl Service,  
A Barn Owl, white wings glimpsed -  
Gliding low over a dusky field.  
Once again I am the child  
That can name such things!

Lucy Brown



**Modbury Tiddlers Playgroup**

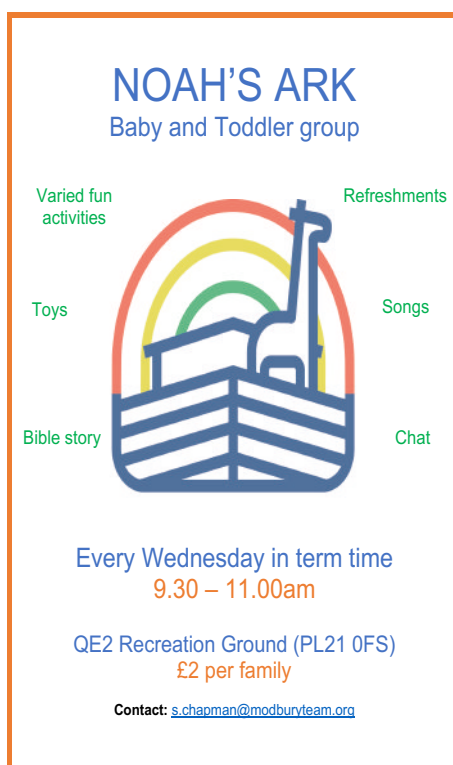
**Come and say hello!**  
For families with children 0-4 years

**Fridays - 9.15-11.15 at Modbury Memorial Hall**  
Last Friday of the month - out and about day  
Term time only

Sensory play, crafts and a dedicated baby area  
Dress up, ride ons, toys and more!  
Refreshments provided for adults and a healthy snack provided for children




Find us on facebook and instagram for up to date info each week  
f Modbury Tiddlers @modbury\_tiddlers  
mail@modburytiddlers.org.uk



**NOAH'S ARK**  
Baby and Toddler group

Varied fun activities Refreshments  
Toys Songs  
Bible story Chat



Every Wednesday in term time  
9.30 - 11.00am

QE2 Recreation Ground (PL21 0FS)  
£2 per family

Contact: [s.chapman@modburyteam.org](mailto:s.chapman@modburyteam.org)



**Need a new website?**

**iMakeWebsites.**

Clear pricing. No jargon.  
Local support.

**Call Vicky on 01548 831910**



**www.imakewebsites.co.uk**



## MODBURY MEADOWS

You may have seen a few volunteers working alongside contractors on green areas around town in mid to late April and wondered what they were up to!

Well, we were successful in applying for a grant to help us establish and maintain some better meadow patches with the assistance of a professional organisation, Parklife. Meadow mixes contain grasses, annual and perennial flowers, and contribute to the biodiversity, which is so badly needed to support insect pollinators, and in turn other species such as birds, bats and hedgehogs. The sites have been carefully selected and will be managed in such a way that they are 'framed' by neat, cut grass or paths. Our grant covers maintenance for 2 years, while we wait for our new meadow patches to take root.

You probably remember us handing out lots of seed packs and instructions last September to enable anyone in Modbury with a space in gardens, tubs or pots to cultivate a wildflower bird and butterfly mix, as a 'pocket meadow'.

We hope that many of you will be successful and that the seeds germinate and the plants thrive this summer. We encourage you to please send your feedback to Life on the Edge, who provided the seeds, between June and August. This is part of a larger project involving other parishes, and it is very important that they know what results people have had. The contact details for feedback through photos and messages are on the leaflet which accompanied the seed.

If you missed out last year, never fear, we have a few more packs available which can be sown asap this month and these can be collected from Neale's Cavern.

For contact details see the poster to the right.

**Life on the Edge**  
working together to restore a coastline buzzing with wildlife

This 'All Things Bright and Beautiful, Bee & Butterfly Wildflower Seed Mix' contains 22 different native wildflower species and 4 naturalised 'super-pollinators' for maximum benefit to bees and butterflies – borage, sainfoin, white clover and red clover.

It's a rich variety of plants with high nectar to attract bees and other pollinators. Brimming with a diverse range of annual and perennial wildflower species, including dozens of the RHS's recommended 'Plants for Pollinators' – there's no better way to get your garden buzzing with life!

We would like to know where you have created your pocket meadow – please register your pocket meadow by visiting our Esri Survey123 Web form. You can either visit [www.arcg.is/zLj9u1](http://www.arcg.is/zLj9u1) or follow the QR Code

Your Pocket Meadow details will not be used by any third party and will be held in accordance to South Devon National Landscape Data protection policy

South Devon National Landscape [southdevon-nl.org.uk](http://southdevon-nl.org.uk)

buglife

POCKET MEADOWS PROJECT

DEVON ENVIRONMENT FOUNDATION

Heritage Fund

Boony Bower

Fitness studio & 24/7 Gym

**BOMBERS**  
PHYSICAL TRAINING

Unit A  
Pearse Gardens  
Modbury  
PL21 0FX

Over 100 5 star reviews

Contact us to book your 'No Sweat Intro'

[www.bomberspt.co.uk](http://www.bomberspt.co.uk) [gym@bomberspt.co.uk](mailto:gym@bomberspt.co.uk)

**THE CIRCLE CELEBRANCY**

**Sarah Wyatt**  
Independent Civil Celebrant

Weddings, Namings, Vow Renewals,  
Funerals – Celebration of Life

MAKING MEMORIES WITH BEAUTIFUL CEREMONIES

Tel: 07794662903 Email: [circlecelebrantsarah@gmail.com](mailto:circlecelebrantsarah@gmail.com)

[www.circlecelebrancy.co.uk](http://www.circlecelebrancy.co.uk)



**A.F. Brown**  
 & Sons Ltd  
*Landscaping and General Building*

**Including:**

**Stone Walling • Retaining Walls • Groundworks  
 Drainage & Irrigation • Driveways  
 Patios & Paths • Gates • Fencing & Decking etc**

Family Business Since 1976  
 Company No.3942610

**Competitive Quotes Given, Full Insurance**

Gatcombe Mill - Littlehempston - Totnes - TQ9 6LW

**Office:** Tel- 01803 864 871  
**Email:** enquiries@afbrown-sons.co.uk  
**Web:** www.afbrown-sons.co.uk

**Est. independent  
 LOCAL ELECTRICIAN**

**Honest and  
 reliable service**



**LightWorks**  
 Domestic Electrician

- Complete rewires and new builds
- New 18th edition Consumer Units/Garage Units
- Landlords & Insurance Certificates
- Domestic electrical fault finding
- Specialising in garden, kitchen and floor lighting from planning to certification

All work guaranteed/certificated  
 Fully insured, qualified &  
 registered with NICEIC



Call Phil for a free, no obligation quote or callout

**Tel: 07769 840012**

Email: lightworks.electrics@gmail.com



**WELLNESS WARRIORS**  
 YOGA STUDIO



Visit us at our dedicated Wellness Sanctuary

**Blissful Yoga.**  
**Workshops & Events.**  
**Coffee & Shopping.**

WellnessWarriorsYogaStudio.co.uk

Modbury High Street, 2C Broad Street, Modbury PL21 0PS  
 Saturdays at Bigbury Beach from April - September



**KILN DRIED LOGS  
 SMOKELESS FUELS  
 ECO BRIQUETTES  
 KINDLING & FIRELIGHTERS  
 CALOR GAS STOCKIST**

**PARKLAND 01548 852723**  
**SORLEY GREEN 07968 222008**  
**KINGSBRIDGE**  
**DEVON**  
**TQ7 4AF info@winterfuelstore.co.uk**  
**www.winterfuelstore.co.uk**



## DAVID SCOTT AND SYLVIA'S FIELD ALLOTMENTS

David Scott, as the new owner of the Allotments in Church Lane, which are now known as the David Scott and Sylvia's Field, met with the Modbury Allotment Association (MAA) Committee, which included the chairman, Brian Weeks, secretary Jane Bullen and Martin Hunt who is the treasurer to discuss the future.

After a productive meeting when fees were discussed, David Scott announced that this annual payment would be given to assist the maintenance of St George's Church fabric. In recognition of this generosity, the MAA presented David with an original painting of the allotments when they first came into being.



## INTENDED MONTHLY FLAG HOIST AT PALM CROSS GREEN - May

Date	Masthead	Starboard Yard (Plymouth) - West	Port Yard (Modbury) - East	Event
01-1	Modbury Flag	Gloved Hand Fair	Rooster Flag	Modbury May Fair Week
06	Union Flag-Royal	CROWN	201 <sup>st</sup> sub3	Coronation Day 2023
08	Union Flag	VEDAY	1945	Victory in Europe Day 1945
09	Guernsey/Jersey	LIBERT	1945	C.I. Liberation Day 1945
10	London City Flag	BLITZ	1941 <sup>st</sup> subAns	End of London Blitz 1941
15	RBL Flag	FOUND	Ans1922 <sup>nd</sup> sub	Founding of the British Legion 1921
16	RAF Ensign	DAMBST	1943	RAF Dam Busters Raid 1943
24	White Ensign	HOOD	1941 <sup>st</sup> sub	Sinking of HMS HOOD 1941
26	Union Flag	DUNKIR	Ans1940	Start of evacuation of Dunkirk 1940
27	White Ensign	BISMAK	1941 <sup>st</sup> sub	Sinking of the Bismark 1941
31	White Ensign	JUTLAD	191 <sup>st</sup> sub6	Battle of Jutland 1916



*Expert care. In the comfort of home.*

See how our Live-in Care services can help your loved ones stay in the place they feel best.

Call us for a friendly chat on

**01752 347 700**



It's good to be home

Or visit  
plymouth@bluebirdcare.co.uk

## PLAYERS WANTED UNDER 10'S & 11'S (SCHOOL YEARS 5&6)

- U10'S - ALL POSITIONS
- U11'S - MIDFIELDERS AND STRIKERS
- OPEN TRAINING SESSIONS: WEDNESDAYS, 5.45PM
- NO PRESSURE - JUST COME ALONG AND HAVE A GO!

EMAIL FOR MORE INFO: [MODBURYROVERSFC@GMAIL.COM](mailto:MODBURYROVERSFC@GMAIL.COM)  
MODBURY RECREATION GROUND, MODBURY, PL21 0FS



# MODBURY MESSENGER

## COMMERCIAL ADVERTISING RATES MODBURY MESSENGER 2026

SIZE	Size - can be portrait or landscape	1 month (per insertion)	3-11 months (per insertion)	12 months (per insertion)	12 months (Year total)
1/8 page	45mm x 65mm	£30	£26	£16	£192
1/4 page	90mm x 130mm	£60	£50	£30	£360
1/2 page	130mm x 180mm	£108	£86	£50	£600
1 page	180mm x 250mm	£192	£148	£80	£960

The Modbury Messenger is an all colour publication, no preferential rates for black & white advertisements.

To advertise in the Modbury Messenger, contact the Editor, Lynne Barnes, via email on [modburymessengercic@gmail.com](mailto:modburymessengercic@gmail.com) with details of the size of the advert and how many months you wish to advertise for.

### Modbury Messenger June 2026

The copy date for the June 2026 Modbury Messenger is **10th May**. Please email all articles, notices of events and paid advertisements to [modburymessengercic@gmail.com](mailto:modburymessengercic@gmail.com).

The Modbury Messenger is published by Modbury Messenger CIC and is printed by ESP Print. The views expressed in the Messenger do not necessarily represent those of Modbury Messenger CIC.

The Editorial Committee reserve the right to précis/abbreviate any copy submitted for inclusion in the Modbury Messenger. Their decision is final. The contents of the Modbury Messenger may not be reproduced in any form without the prior written permission of Modbury Messenger CIC. Guidance for submitting material is available online at <http://modburymessengercic.co.uk/about.html>

**Persons submitting entries with art or photographs not drawn or taken by themselves must confirm they have obtained copyright permission, or agree to pay any copyright fine which is subsequently raised**

[modburymessengercic@gmail.com](mailto:modburymessengercic@gmail.com)

### MODBURY MESSENGER CIC

Modbury Messenger CIC is a Community Interest Company and as such is registered by the Registrar of Companies for England & Wales, Northern Ireland or Scotland. A Community Interest Company is a special type of not-for-profit limited company which exists to benefit the community. The purpose of Modbury Messenger CIC is to disseminate information about events, notices and articles of interest to the people of Modbury and it does this by publishing the Modbury Messenger, a printed newsletter, every month with 1000 copies delivered to homes and businesses within the Parish of Modbury. An online copy of the Modbury Messenger is available to neighbouring communities, advertised via social media and on our website [modburymessengercic.co.uk](http://modburymessengercic.co.uk).

Advertisers are charged a fee for advertising in the Modbury Messenger and this covers the cost of producing the Modbury Messenger. The Board of Directors, Company Secretary, Editor, Proofreaders and Distributors are all volunteers.

**Directors of Modbury Messenger CIC:** Diana Lynne Barnes & Bernard Taylor.

**Company Secretary:** George Rosevear FCIS.

**Editorial Committee:** John Bower, Lynne Barnes, Ira Young.

Modbury Messenger CIC has produced the Modbury Messenger as an independent CIC since September 2018. Previously, it was published by Modbury Parish Council.

# THE FLOOR SHOW



Your Local South Hams  
**Carpet & Vinyl Flooring Experts**

7 Church Street, Modbury,  
Devon. PL21 0QW

**01548 830909**

thefloorshowmodbury@gmail.com

www.thefloorshowmodbury.co.uk

## GREENLANDS NURSERY

Higher Wizaller, Modbury, PL21 OSE



Shrubs and Perennials

Godwins Professional

Peat Free Compost

Planted hanging baskets

Holly wreaths at £10 & £12 each

Deliveries can be arranged

**Local family run business excellent value**

Tel: 01548 550491 or 07534 611587

Email [brendagreenlandsmodbury@yahoo.com](mailto:brendagreenlandsmodbury@yahoo.com)

We also have a good selection of marble based garden ornaments



- Bathroom and kitchen fitting
- Floor and wall tiling
- Leaking toilets/radiators/taps etc
- Radiator replacement and additions
- Shower pumps
- Links with local builder/electrician for larger installations if required

## Chapman & Sons Plumbing Service



Small jobs welcome  
Reasonable rates  
Free quotes

Telephone 07468 466380 now  
for a speedy and efficient service.



MARCHAND PETIT

COASTAL, TOWN & COUNTRY

For customers who expect more  
from their estate agents.

Our Modbury team, led by Helen Harris and Debbie Cole,  
has a wealth of South Devon Estate Agency experience,  
covering the coast and countryside.

Whether you're looking to buy or sell, contact our  
friendly and knowledgeable team today.

SALES | LETTINGS | AUCTIONS

01548 831163 | [modbury@marchandpetit.co.uk](mailto:modbury@marchandpetit.co.uk)

4 Broad St, Modbury, Ivybridge PL21 0PS

[www.marchandpetit.co.uk](http://www.marchandpetit.co.uk)



HELEN MOORE  
PROPERTY

POWERED BY  
**exp** UK

Independent Estate Agents

Over 100 years combined  
experience

Local. Approachable. Honest.

 01752 962162



MODBURY  
DENTAL PRACTICE

## OUR SERVICES

- Cosmetic Dentistry
- Dental Implants
- Restorative Dentistry
- Hygiene Services
- Orthodontic Aligners
- Same Day Emergencies
- Root Canal Treatment
- Extractions
- Dentures
- Tooth Whitening
- Facial Aesthetics
- Membership Plans

## MODBURY DENTAL PRACTICE

*Tailored dental treatments for the entire family*

### Practice Plans

Our plans allow you to spread the cost of your dental exams and hygienist visits into monthly payments.

### Finance Options

We offer a 0% APR finance so you can spread the cost of your dental treatments in affordable payments.

## NEW PATIENTS WELCOME

4 Broad St, Modbury, Ivybridge PL21 0PS

Tel no: 01548 830811

Mon-Fri | Private appointments only

[www.modburydentalpractice.com](http://www.modburydentalpractice.com)