



Illustration - Ter Allen

For the People of Modbury & Brownston

Volume 26, Issue 322 - January 2026



## Modbury's Toy Soldiers in New Barracks

Mr. McAllister's Amazing Toy Soldier Emporium has moved into its new, renovated premises in Church Street in Modbury. The shop is much larger than the previous premises in Brownston Street so many more articles are on display. It isn't just toy soldiers, it is related games, puzzles and other military ephemera.

Everyone is welcome to come in and look around the shop, chat with Gerry McAllister and ask questions about his remarkable collections. Items are for sale for a few pounds upwards, with many unique items. The displays change regularly so you may see the Battle of Waterloo one month or the Battle of the Bulge the next.

After all the Toy Soldiers had completed their transfer to Mr. McAllister's Amazing Toy Soldier Emporium, the new premises were officially opened on Friday 28th November and David Scott, Modbury's Town Crier, has included his cry from the opening on page 13 of the Modbury Messenger.

If you haven't yet visited the new shop, then go on down as soon as possible and you will be delighted to see the last Toy Soldier shop left in the country, and while in the town centre, why not visit all the other traders, including Mewstone Home, which now offer candle making workshops.

## FALCON

ENVIRONMENTAL SERVICES

**Local trusted experts in:**

 **Pest control**  **Wildlife management**  
 **Specialist cleaning**  **Bird control**

**We combine our environmentally-friendly approach with proven modern and traditional methods.**

**Call Us: 01752 929292 | [www.falcones.co.uk](http://www.falcones.co.uk)**

Google ★★★★★





## MICHAEL R HAGGER

### Professional Painter & Decorator

City & Guilds Advanced Craft trained

Over 40 years decorating  
experience, with the last 26 years  
in the wonderful South Hams.

Fully Insured



For a friendly,  
no obligation  
estimate or  
reference

Tel: 07977445521



## MARTIN LEY PLUMBING & HEATING

- Oil Installations,  
Servicing & Repairs
- Unvented Cylinders
- Bathrooms & Showers
- General Plumbing

Tel: Modbury 01548 830609  
Mobile: 07811 934551

## Tall Orders Landscaping

All aspects of gardening

\*Hedge trimming / Tree work

\*Grass cutting - Lawns to Paddocks

\*Fencing / Turfing / Stump grinding

\*Weed control / Lawn Scarifying

### Logs Supplied

\*Locally sourced hardwood

\*Delivered in dumpy bags / nets

Tel . 01548 831139 / 07967258318



ARE YOU PAYING TOO MUCH TAX ?  
ARE YOUR ACCOUNTS AND TAX AFFAIRS UP TO DATE ?  
ARE YOUR ACCOUNTING SERVICES COMPETITIVE ?

FOR A SERVICE SECOND TO NONE CONTACT

### MARTIN E RANWELL, FCA ELLIOTT & PARTNERS

ACCOUNTANTS AND TAX CONSULTANTS

KINGSWAY, 10 THE PRIORY,  
MODBURY PL21 0TL  
AND AT 6 MODBURY COURT, 32 CHURCH STREET  
T. 01548 830432 M. 07763 526814

[martinranwell@googlemail.com](mailto:martinranwell@googlemail.com)

EXTENSIVE EXPERIENCE IN BOTH COMMERCE  
AND THE PROFESSION  
ALSO PROPERTY MANAGEMENT SERVICES



## Coastal Computers

PC & Laptop Repair / Upgrades  
Internet & Email Support  
Device Security & Protection  
Smart Home Devices  
Data Migration & Recovery  
General Guidance

[www.coastal-computers.co.uk](http://www.coastal-computers.co.uk)  
[info@coastal-computers.co.uk](mailto:info@coastal-computers.co.uk)  
07459 766420

## Modbury taxi



Contact  
Tel : 07455393693

### Modbury Private Hire Taxi

Pre booking is required for all local and longer  
distance journeys. This includes daytime,  
evening and airport transfers. Prices are  
agreed on booking.

Please don't hesitate to contact us if you have  
any questions.

07455393693



### Architectural Drawings and Planning Applications

Contact Alayne Harris B.D.  
0755 191 0874  
[info@designedspace.co.uk](mailto:info@designedspace.co.uk)

Based in Modbury



GEORGE H.W. ROSEVEAR  
& COMPANY  
A DIVISION OF HOLBROOK ASSOCIATES

ACCOUNTANCY, TAXATION AND  
COMPANY SECRETARIAL SERVICES

01548 831427

3 MODBURY COURT, 32 CHURCH ST.,  
MODBURY, DEVON, PL21 0QR  
[george@holbrookass.com](mailto:george@holbrookass.com)

## A.R.Hilder

B.Sc est 1985

### Garden design, care & Maintenance specialist

I can care for your borders,  
shrubs, trees, hedges,  
vegetable patch & fruit trees

FORMER VOLUNTEER NATURE RESERVE  
WARDEN AND FORMER HEAD GARDENER TO  
A CORNISH ESTATE WITH OVER 40 YEARS OF  
EXPERIENCE. I CAN HELP TO ENCOURAGE  
MORE WILDLIFE INTO YOUR GARDEN

Call 07762 269436 for free  
initial consultation

## Sustainable Energy Event January 17<sup>th</sup> at the QEII

It's that time of year when most of us are thinking about our heating and energy bills, especially after all those Christmas expenses. Lovely though the old buildings in and around Modbury are, keeping them warm and dry can come with quite a cost.

Even newer buildings may benefit from energy improvements. Modbury Parish Council has teamed up with Sustainable South Hams for a free afternoon of advice and ideas to help with energy saving. There will be independent advisers to discuss ways of making your home more energy efficient and reducing bills, information from local firms specialising in energy assessments and installations, and a chance to ask questions about making improvements to listed buildings.

Looking to the future, there will be information about community energy projects, including from a speaker involved in a successful local project. Last, but not least, there will be free refreshments. What better way to spend a cold afternoon in January than coming along and finding ways to stay warm!

**Ann Turner**  
Modbury Parish Council



# MODBURY & AREA



# ENERGY FAIR

*Looking to future-proof your home, lower your bills or to generate your own cleaner, greener energy? Come along for impartial energy advice and stalls from a range of local installer companies.*

**Sat  
17th Jan**

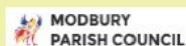
**1pm- 4pm**

**QEII  
Pavilion  
Modbury**

-  **Reduce energy costs**
-  **Renewable energy options**
-  **Learn about retrofit**
-  **Access expert advice**
-  **Improve warmth & comfort**
-  **Grants and funding**
-  **Kids activity table**



**FREE!**  
Drop-in event,  
tea & cake



Could you help support the wonderful work done by the volunteer drivers and befrienders of Modbury Caring?

**Join our 100 Club with a  
£20 per year subscription**

**It's a monthly draw with cash prizes  
of £30 and £20 each month**

Apply via our website: [www.modburycaring.org.uk](http://www.modburycaring.org.uk)  
or pick up a form from the Modbury Parish Office and  
leave the completed form for the attention of  
Michael Young at the Parish Office

Modbury Caring: Charity number 1070237, provides services to patients and residents in  
Modbury and the outlying villages.

**SEASONAL PARKING  
TICKETS AVAILABLE  
— FOR —  
MOUNT FOLLY FARM  
FIELD CAR PARK  
AT BIGBURY-ON-SEA  
AND CHALLABOROUGH  
£50 FOR A 2026  
CALENDAR YEAR**

**PLEASE CONTACT  
INFO@BIGBURYHOLIDAYS.CO.UK  
TO FIND OUT MORE**





*Tailor-made* **travel  
arrangements to  
Africa and Latin  
America.**

35 Church Street, Modbury • 01548 858 272  
[sales@distinctiveamericas.com](mailto:sales@distinctiveamericas.com)  
[www.distinctiveamericas.com](http://www.distinctiveamericas.com)

**DISTINCTIVE  
AFRICA**



**DISTINCTIVE  
AMERICAS**

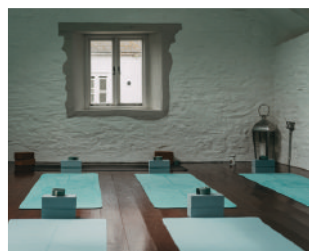


## Modbury Therapy Centre Health and Wellbeing Centre

### Offering Complementary Therapies

Acupuncture, Reflexology, Massage Therapy, Homeopathy, Counselling,  
 Psychotherapy, Nutritional Therapy, Yoga, Pilates, Meditation,  
 Cognitive Behavioural Therapy, EFT, Life Coaching, Sound Healing

[www.modburytherapycentre.co.uk](http://www.modburytherapycentre.co.uk)  
[enquiries@modburytherapycentre.co.uk](mailto:enquiries@modburytherapycentre.co.uk)  
 07973 367517



To advertise your business in the Modbury Messenger, please contact us at  
[modburymessengercic@gmail.com](mailto:modburymessengercic@gmail.com)  
[www.modburymessengercic.co.uk](http://www.modburymessengercic.co.uk)



## Reverse Advent Calendar

In the countdown to Advent, St George's Church encouraged members of the congregation to participate in the Reverse Advent Calendar where, instead of opening a window each day and receiving something, you donated something every day for 24 days in November for Kingsbridge Food Bank. Organised by Heather Farrow, the items were collected at home and then the 24 items were brought to the Team Service on Sunday 30th November so they could be taken en masse to Kingsbridge. The Food Bank is a charity that assists families in crisis by acquiring and distributing emergency food supplies.

The result was an outstanding success with an amazing amount of goodies ranging from the basic essentials to chocolate treats, mince pies and Christmas cake. They were all laid out in the church so that the Rev. Oli Long and the Bishop of Plymouth, Rt. Rev. James Grier, were able to bless the produce before it was taken to Kingsbridge.



Bishop James, Heather Farrow and Rev. Oli Long

1 Tinned soup	2 Pringles or similar	3 Jar of cooking sauce	4 Chutney / Sweet pickle	5 Custard (tin or carton)	6 Box of biscuits
7 Jar of cranberry sauce	8 Pickled onions / beetroot	9 Tinned fish	10 Long life fruit juice	11 Christmas biscuits or cakes	12 Stuffing
13 Crackers for cheese	14 Rice	15 Tea bags	16 Cheese / bread sauce mix	17 Children's selection box	18 Tinned tomatoes
19 UHT long life milk	20 After dinner mints	21 Hot chocolate	22 Breakfast cereal	23 Tinned beans / vegetable	24 Mince pies

St George's has been supporting Kingsbridge Foodbank for a number of years and if anyone wishes to donate any produce, there is always a box at the back of the church and in the Co-op where items may be left for distribution.

Robin Chambers

## COUNTRY MUSIC NIGHT

More live music and dancing is coming your way in 2026.

This time it's Hipslinger, a country music band, who will get your feet moving with a great selection of music, including some line dancing, for which there will be an expert 'caller'.

Feel free to wear your cowboy/girl gear, though it's not compulsory! Did you know that the Stetson family lived in Modbury for several generations before migrating to USA in 1634, where they founded the legendary western hat company which still bears their name?

Proceeds will support Modbury Cubs and Scouts, run by volunteers, but needing extra financial support. Money raised will help towards camping equipment and experiences such as climbing, caving, kayaking and other outdoor pursuits, for which costs are ever increasing.

**COUNTRY MUSIC NIGHT**

In the UK home of the Stetson Family.

**Friday 27<sup>th</sup> Feb 2026**  
@Modbury Memorial Hall. Bar / raffle.

Dust off your cowboy boots and hats and join us for line dancing (with expert tuition) then boogie the night away to live music from SW country music sensations 'Hipslinger'.

**In aid of Modbury Cubs & Scouts**  
Doors @ 7pm / Event starts at 7.45pm

**Tickets £10 available from Modbury Post Office**  
(event suitable for those over 12 yrs)



## MODBURY BRIDGE CLUB

Do you enjoy playing bridge? Maybe you play kitchen bridge or perhaps you've played duplicate bridge in the past, and now feel a little bit 'rusty'. Maybe you are simply looking for a new, or an additional, bridge home where you can play more duplicate bridge and meet new people.

Why not give Modbury Bridge Club a try? We're a friendly bunch and play on a Thursday afternoon in the Mars Pavilion at the QEII Recreational Ground, Chatwell Lane, Modbury PL21 0FS. You probably know the MARS Pavilion if you're local, and you will therefore know that it is a clean modern building with plenty of free parking.

Membership of the Bridge Club is a princely £5 per annum! And table money of £2.50 (or £3.50 if not a member) is a bargain rate for an afternoon of fun and relaxed challenge. If you need any bridge advice or instruction, we have people who can offer that, as well as the free tea/coffee and biscuits. Not to be missed, eh? We also offer free, hosted sessions online for members on Sunday and Wednesday evenings.

If reading this has whetted your appetite, then come along and join us. Check us out online at Modbury Bridge Club or you can email Rodney at [nootig321@gmail.com](mailto:nootig321@gmail.com) if you have questions. Let us know in advance if you need a partner, and please arrive in time to be seated and ready to play at 1pm. The approximate finish time is 4:15 pm.

Hope to see you soon.....

**Anne Ashton**



**Fitness studio & 24/7 Gym**

**BOMBERS**  
PHYSICAL TRAINING

Unit A  
Pearce Gardens  
Modbury  
PL21 0FX

Over 100 5 star reviews

Contact us to book  
your 'No Sweat Intro'

[www.bomberspt.co.uk](http://www.bomberspt.co.uk) [gym@bomberspt.co.uk](mailto:gym@bomberspt.co.uk)



**NEALE'S CAVERN**

**WE DO REPAIRS!**  
**BRING YOUR DEVICE**  
The Premier Gadget Repair Centre  
You Break it.... We FIX it!!!

We are based in  
Modbury - PL21 0PS

Contact us on: 07920 461079

Email:  
[info@nealescavern.com](mailto:info@nealescavern.com)

Bookings can be made from  
our Webpage -  
<https://www.nealescavern.com>

**WE ARE OPEN MON - SAT**  
**10:00AM - 18:00PM**

Neale's Cavern can help you with your faulty phone, device, tablet, or gadget. One of our skilled technicians will quickly repair your phone and have it back to you as soon as possible.

We repair all makes and models of Mobile phone, iPad, Laptop, MacBook and GHD repairs.

We also sell  
Stationery, batteries, Dog treats, Hardware, Electrical, Fire wood and Coal, Paint brushes, Cleaning and Phone/iPad leads & Chargers.



 **Luscombe Maye**  
Since 1873

## The Luscombe Maye Advantage

To find out how much your home is worth, please call or email Eleanor, Sara, Janice or Ryan in the Modbury office.

For more information contact  
[modbury@luscombemaye.com](mailto:modbury@luscombemaye.com) or  
call 01548 830831

[luscombemaye.com](http://luscombemaye.com)  [luscombe maye](https://www.facebook.com/luscombe.maye)  [luscombe\\_maye](https://www.instagram.com/luscombe_maye)

# Highways Maintenance, Flooding, Road Safety and Street Cleansing Update



Readers will possibly recall that, during the late summer and autumn, the Parish Council has been liaising with the two principal authorities – Devon County Council and South Hams District Council – to seek improvements to the maintenance of our roads and to address road safety and flooding concerns.

On 23rd October, the Chair, Vice-Chair and Clerk met with County Councillor, Louise Wainwright, and Neighbourhood Highways Manager, Adam Keay, for a wide-ranging discussion of these and other issues. As a result of the meeting, we are able to offer the following updates:

## Highways Condition

- DCC have undertaken further emergency works to address potholes on the main roads crossing the parish.
- MPC continue to undertake minor pothole repairs on the non-A roads, but cannot keep up with the pace of carriageway deterioration.
- DCC have agreed to prioritise the resurfacing of the Bastards Park Corner to Ayleston Cross road and Church Lane to Wedlands and beyond, although they are not programmed until 2028/9. In the meantime, we are continuing to press them to undertake emergency repairs to the former road and some have now been completed although there is more to be done.
- DCC have not prioritised the Ayleston Cross to Trehele Cross stretch, despite our lobbying, but we will continue to pressure them to do so, because this lane is one of the three worst in the parish.
- We have requested that DCC reconsider our offer, previously rejected, to majority fund the ploughing-out of lanes where debris has collected in the middle of the carriageway, potentially damaging low-slung vehicles.

## Highways Drainage

- DCC have confirmed that clearance of drainage gullies (a significant cause of the recent flooding) is now only undertaken on an annual basis in high-flood-risk locations, and every three years elsewhere. We have requested that Church St, Broad St, Dark Lane, Brownston St, Galpin St and Scalders Lane be considered priority locations.
- Our own drainage team continue to undertake buddle hole and drainage ditch clearance in the rural areas but, again, struggle to keep up with demand.

## Road Safety

- DCC has been asked to prioritise our application for a 20mph speed limit in Barracks Rd, Chatwell Lane as far as the QEll pedestrian entrance and Dark Lane for safety reasons. We await a response.
- We have also asked for a meeting with the street-lighting team to provide street lighting from the Barracks Rd/Dark Lane junction to the QEll pedestrian entrance, even if this has to be funded by the Parish Council. Again a response is awaited.
- DCC have agreed to undertake a safety audit and feasibility study in relation to the pedestrian crossing in Church St, where we have become aware of multiple accident near-misses.
- DCC are unable to help further in relation to the illegal parking at the Co-op corner and we have been advised to take photographs and involve the Traffic Enforcement Team.

We have also lobbied South Hams District Council as the street cleaning authority to seek an improved service that prevents a build up of dead leaves, soil and other detritus in the gutters and around the gullies of the streets of Modbury. This was another contributing factor in the flooding which affected the town centre last year and in late August. As a result, the street sweeping team visited the town during weeks commencing 17 November and 15 December.

Thank you to our County and District councillors, Louise Wainwright and Bernard Taylor, for brokering these discussions on our behalf, which we hope will benefit the residents of Modbury Parish.

**Phil Smith, Modbury Parish Council**



**Tree Surgery & Landscape Management**

**Contact: Andy Walker on 07793 056898**

**[info@coastalgardenservices.co.uk](mailto:info@coastalgardenservices.co.uk)**

**Working in the South Hams for 12+ years**

**Fully insured - NPTC & RHS qualified**



[www.let-it-out.co.uk](http://www.let-it-out.co.uk)

*The flexible approach  
to letting your holiday home*

Gail Critchlow  
07889 628514

Liz Baker-James  
07388 673228



# Modbury Parish Council Meeting

## Tuesday 2nd December 2025, 7:00pm



**MODBURY**  
PARISH COUNCIL

Present were seven councillors, Cllr Bernard Taylor, South Hams DC, and four members of the public. Apologies were received from Cllr Sarah Wyatt and Cllr Louise Wainwright, Devon CC.

### Public Forum

- A member of the public raised a planning issue and it will be further discussed at the next planning meeting.
- A member of the public brought up the lack of lighting and cats-eyes on the Edmeston straight. MPC has raised this safety issue with DCC Highways.

### Report from Bernard Taylor, SHDC Councillor

- Local Government Reorganisation (LGR) consultations continue.
- Community awards proposals will be sought next January for award in March 2026

### Finance:

Note that Cllr Tony Price was elected as Chair of MPC Finance and HR Committee.

### Health & Safety

- MPC are talking to the suppliers and SHDC about structures in the play areas.
- The Memorial Hall play area has now had its internal fence replaced; the new structure has a 25-year warranty.

### Devolution

- LGR has three proposals (from Devon District Councils, DCC and Plymouth/Exeter) put forward on how to divide Devon up into larger unitary councils; these proposals are being considered by central government for a decision early next summer.
- Local Neighbourhood Area Committees; these will act as the level of action and consultation between the main unitary council and the town/parish councils.

### MARS

The creation of a charity to run the Recreation Ground and QEII Pavilion proceeds; this will take over direct responsibility from MPC. The charity will be called the Modbury Recreation and Sports Trust with MPC as sole trustee. The body which oversees the public ownership of the facility, Fields in Trust, has agreed that this can go ahead.

MPC met with assorted stakeholders in Modbury to look at public spaces within the town and who looks after our spaces. A follow-up meeting will confirm details of responsibilities and this can then be updated annually to clarify the situation.

Pothole repairs within the parish continue from our dedicated volunteer team, and so far this financial year our team have already used over 200 buckets of pothole repair material. Note that MPC can only work on minor roads and not the A379.

On January 17<sup>th</sup> MPC are hosting a South Hams meeting on sustainable energy use within the area.

**Date of next meeting: Tuesday 6<sup>th</sup> January 2026 @ 7pm**

**Tony Price**

## Pause for Thought

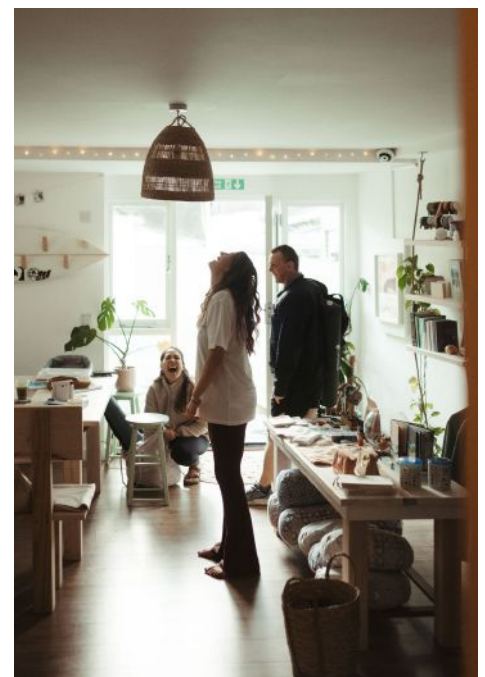
As the pressures of the New Year fade away, I invite you to pause. Take a breath. Inhale 4,3,2,1 and big sigh out. Have you taken on too much? Tried to change too much too soon? New Year's resolutions are great for that moment of reflection, that reminder to recalibrate to who we are, what our values are and to change our course or rewrite what's not working for us. But the New Year also comes with this underlying feeling of we're not enough, that we need to be adding more to our already packed schedules, flying to the most remote destinations and with the current climate, that's not possible for a lot of us right now. But I'm here to remind you that it's not those big changes that will have a lasting impact. It's the spaces in between. It's doing all we are already doing but with more awareness, savouring the coffee, getting outside for wet and windy walks, moving our bodies in the ways that make us happy, laughing with friends and family and being present and treasuring their time. It's noticing the change of seasons, the frost on the cars, the songs of the birds, and not rushing through life but savouring it for all its sweetness that is already there.

What can you notice and appreciate right now?

What's one thing you can take off your to-do list?

Wishing you a month of seeing the beauty that already exists.

Pssst you're doing enough X.



**Becky Hickman & the Wellness Warriors Team**





**KIDS' CHURCH** - Kids' Church meets in Modbury Primary School. Parents, please drop off your Explorers (age 9+) and Discoverers (age 6-8) at the school from 9:15am where they will be met by one of the leaders. After Kids' Church, the youngsters will be taken to St. George's to be with their parents at the end of the service. Climbers (age 0-5) will remain in St. George's, meeting their leader to be taken to the Lower Vestry. If you have any questions regarding Kids' Church, please contact Sara Chapman on [s.chapman@modburyteam.org](mailto:s.chapman@modburyteam.org).

For St George's Parish enquiries, contact Mrs Gill West, Churchwarden 07849253605

	Service	Service Leader
<b>January 4th</b>	Holy Communion and Kids' Church 9:30 am	Rev. John Elliott
<b>January 11th</b>	Holy Communion BCP 8:00 am All-Age Service 9:30 am	Rev. Simon Franklin Helen Pickard
<b>January 18th</b>	Holy Communion and Kids' Church 9:30 am	Rev. Oli Long/Gil Snook
<b>January 25th</b>	Sunday Worship 9:30 am	Joyce Howitt
<b>Wednesday January 28th</b>	Licensing and Installation of Rev. Oli Long as Rector of the Modbury Mission Community 7:00 pm	The Rt. Rev. James Grier, Bishop of Plymouth

## A New Chapter for the Modbury Mission Community: Welcoming a New Rector

The appointment of a new vicar is never a simple affair. In fact, it is one of the Church of England's most carefully regulated processes, shaped by ecclesiastical law, tradition, and Acts of Parliament. It is also deliberately slow, giving parishes the space to reflect on past ministry and to identify their hopes for the future. Only when that discernment is complete is the post advertised, the candidates shortlisted, and the interviews begun; this is an intense process involving the Bishop, the Patrons, the Archdeacon and parish representatives.

Nine months after the departure of the Rev. Matt Rowland, that journey has reached a joyful conclusion. The Modbury Mission Community has appointed its new vicar, and on 28 January, the Bishop of Plymouth will install him as Rector at St George Church. A new year brings a new vicar—quite literally.

**A Familiar Face Steps Forward:** So who has been chosen to lead the community into its next chapter? The Rev Oli Long—yes, *that* Oli Long, the curate who has been serving here for the past two and a half years. After a competitive process, he emerged as the popular choice to become the next Rector.

**From Sports Fields to the Pulpit:** Oli's story begins in Chichester, West Sussex, where he grew up as the second youngest of six children in a close, church-going family. His early years were shaped by Sundays at the local Baptist church—until the call of rugby and other sports began to tug him away, as it does for many teenagers. But the ember of faith never went out, and at 19, he experienced a powerful personal renewal that led to his baptism in the Baptist church and a deep commitment to his Christian faith.

Sport, rather than academia, was always his passion. He toyed with becoming a PE teacher, firefighter, or even joining the Royal Navy, like his grandfather. Instead, he first trained as a watersports instructor and later worked for his father on building sites, discovering a talent for bricklaying that carried him through the next decade.

**A Calling That Would Not Let Go:** Throughout those years, Oli felt a persistent sense of calling—one strongly supported by his wife, Sarah, daughter of a Baptist minister. His church life spanned several denominations, youth work, and a memorable three years with an energetic congregation in Belfast. Later, while helping to establish a new church in Plymouth, he found himself increasingly drawn to the Church of England. A local vicar quietly, persistently suggested he consider ordained ministry. Eventually, he said yes.

From the outset, Oli made an impression. His warmth, humour, deep faith and passionate preaching quickly endeared him to congregations across the community. Though it is unusual in the Church of England for a curate to be appointed directly as Rector in the same place, few were surprised when he emerged as the preferred candidate to succeed his mentor. The family moved into the Modbury vicarage in November and are already becoming part of local life.

**Rooted in Community, Drawn to the South Hams:** A keen sportsman still, Oli keeps fit with daily runs and enjoys squash and surfing. Though much of his ministry has unfolded in urban settings, he is strongly attracted to rural life, the closeness to nature, the rhythm of the seasons, and the way communities take pride in their landscape, villages and way of life. During one conversation, the December wind howled down the chimney and rain hammered the windows of the vicarage, apt reminders, he laughed, of exactly why he loves it here.

He is particularly excited about the opportunities ahead; engaging with people of all ages and backgrounds, supporting young families, working closely with local schools and helping people to come to faith. Above all, he sees his ministry as one of enabling others to uncover their gifts, step into new roles, so that they realise their potential and grow in faith and confidence.

### And a Few Personal Details...

Oli trained at St Mellitus College in Plymouth, where he discovered a delight in theology and enjoyed the interaction with students across the breadth of the Anglican tradition. He was ordained in 2023 and moved to the Modbury Mission Community as curate, settling into the Ringmore vicarage with Sarah and their five children, then aged from a babe-in-arms to twelve.

Oli remains a committed rugby fan (though well aware of Plymouth Albion's unpredictable fortunes). He enjoys a good beer or glass of wine—chosen to complement the meal, he insists—and considers his family his greatest achievement, though he's quick to credit Sarah for that.

### Join the Celebration

Everyone is warmly invited to attend Oli's licensing and installation service at **St George's Church on 28 January 2026 at 7pm**—a moment of celebration, commitment and hopeful new beginnings for the entire Modbury Mission Community.

**St George's Church**

**FIONA'S FANCY FEET**  
DANCE SCHOOL

**CLASSES IN MODBURY  
AND KINGSBRIDGE**

**Scan the QR code**




**CONTACT FIONA ON**  
07800883367  
FIONASFANCYFEET@GMAIL.COM  
WWW.FIONASFANCYFEET.ORG.UK

CELEBRATING  
**10** YEARS

**imakewebsites.**



**NEED A NEW  
WEBSITE?**

**I CAN MAKE IT!**

**Contact Vicky**  
01548 831910  
www.imakewebsites.co.uk

**BIGBURY  
CAMPING  
BARN**




**Shake off the winter blues with an  
uplifting and revitalising spa day,  
available for your exclusive use.**

**Contact Cathy 01548 810079**  
info@bigburyholidays.co.uk  
www.bigburyholidays.co.uk

## MODBURY PARISH COUNCIL

Modbury Parish Council Office, 1 Modbury Court, PL21 0QR  
Tel: 07467134225 email parishclerk@modburyparishcouncil.gov.uk

### Your Councillors are:

Bill Cole	01548 830913	
Chris Field	07836 592854	chrisfield@modburyparishcouncil.gov.uk
Barbara Price (Chair)	07739752095	barbaraprice@modburyparishcouncil.gov.uk
Tony Price	07801837129	tonyprice@modburyparishcouncil.gov.uk
Phil Smith (Vice Chair)	07759282404	philsmith@modburyparishcouncil.gov.uk
Dave Trigger	07808742372	davetrigger@modburyparishcouncil.gov.uk
Ann Turner	01548830606	annturner@modburyparishcouncil.gov.uk
Sarah Wyatt	07794 662903	sarahwyatt@modburyparishcouncil.gov.uk

**How can we help you?** Councillors run drop-in surgeries on Sat. 10:00 - 11:00 am in the Parish Office at 1 Modbury Court. The Parish Clerk is in the Parish Council office on Tues & Wed, 10:30 am – 5:00pm. Call into the office, phone, email or come along to our meetings at 7:00 pm in the Pavilion, QEII Recreation Ground on the first Tuesday of every month and speak in the public forum.

<b>Devon County Councillor (Salcombe Division):</b>	Louise Wainwright	Tel: 07908 525663 louise.wainwright@devon.gov.uk
<b>South Hams District Councillor (Charterlands Ward):</b>	Bernard Taylor	Tel: 01548 830844 Cllr.Bernard.Taylor@southhams.gov.uk



# Life according to Jesus



321 is a course that invites you to see life the way Jesus does. Inspired by Jesus' vision of reality, 321 is designed to help you think about God, the world and yourself through immersive videos and thoughtful illustrations.

19/26 Jan  
02/09 Feb

St Georges,  
Modbury

Relaxed environment to explore the Christian faith

Email: Oli.long@modburyteam.org

## St Monica's Roman Catholic Church, Modbury

No weekly mass at present

## St Austin's Priory Roman Catholic Church, Cadleigh

Mass weekly at 11:30 am  
on Sunday

Phone: 01752 895888

Web: [staustinsivybridge.co.uk](http://staustinsivybridge.co.uk)



## Modbury Branch Royal British Legion



With Christmas and New Yearover, there will be no Social Gathering in January and so the next Meeting of the Modbury and District Branch of the Royal British Legion will be a Business Meeting in The Club on Wednesday 4th February at 7:30pm. All are welcome.

**David Scott**

## Modbury's QUINTESSENTIAL QUIZ Night



Saturday 17<sup>th</sup>  
January 2026  
7pm Start

Join us for Pub Quiz Night, a night of trivia and fun, in aid of Luna's Fund!  
Get your Teams together ( maximum teams of 6. )

The night will also include 'stand up bingo', and a great disco to end the night!

Upstairs in the White Hart Function Room

Tickets £10pp  
includes a hot pasty.



Tickets available  
at the Post Office  
or via QR Code.



Registered with  
FUNDRAISING  
REGULATOR

Luna's Fund  
Registered Charity in England & Wales 1184371

## KINGSBRIDGE COMPASSIONATE CAFE

The Kingsbridge Compassionate Cafe for bereavement support, is run by volunteers under the auspices of St Luke's Hospice. They are not counsellors, but are good listeners - compassionate friends.

We know that coming along to something new - especially something like a Compassionate Cafe - might feel a bit daunting. If you're grieving, caring for someone, living with loss, or simply feeling isolated, walking into a room of people you don't know can feel like a big step.

It is a confidential group and we thank you for not sharing the thoughts and comments made by others. So here's what actually happens. When you arrive, a volunteer will welcome you with a cuppa and a gentle chat - nothing formal, just checking in to help you feel at ease. You can stay one-to-one if you prefer, or join the table where a small group gathers. Sometimes the conversation is light hearted, about the weather, local news, day to day things. Someone might mention a loved one they've lost or share a memory. Tears might be shed and that's OK. Those moments are important and can be shared without judgement. There's no expectation to talk about anything personal. Some people just sit quietly in a space where they feel understood. Others come because it's the only time that week they'll be around people who truly "get it". There's usually three or more of the volunteers - and a mixed group of visitors, ranging from three or four, to as many as ten. Tea, coffee and biscuits are readily available. Conversations shift and settle naturally and the room adapts to what is needed.

No need to book, just come as you are. However, if you would like someone to meet you outside so you don't have to walk in alone, or have any questions, please contact us on [compassionatecafekingsbridge@gmail.com](mailto:compassionatecafekingsbridge@gmail.com) and someone will get back to you. We meet on the second and fourth Saturday of every month from 10.30 until 12 at the Methodist Church at the top of Fore Street in Kingsbridge. You're not alone and you're always welcome!

**Scarlett**

## Ivybridge u3a General Meeting

Monday 19<sup>th</sup> January 2026, 2.00pm at The Watermark Centre

Guest speaker Clive Charlton will talk about "The Remarkable Ernestine Edgcumbe"

Ernestine Edgcumbe (1843-1925) was the daughter of the third Earl of Mount Edgcumbe. She was a spirited, intelligent and much-travelled woman with a wide interest in politics, society and, world affairs. She lived in Cotehele House for many years. Her diaries offer an entertaining insight into her life and times.

The event is open to members and to those no longer in full-time employment who wish to find out more of what u3a has to offer.

**Roy Little**

## It's Wassail Time: A Great Way to Start the Year

Modbury Community Orchard Group welcomes Wassailers old and new to this wonderful midwinter celebration of our magnificent community orchards. If you haven't attended one of our many annual Wassails before, please come along. You will be helping to keep alive a tradition that goes back centuries particularly in Devon and the west country.

### What happens at a Wassail?

The term Wassail comes from old Norse and is a greeting that means "be of good health". The reply to this is "Drink Hael". So, whenever you hear the word 'Wassail' you know how to respond.

The health being toasted at Wassail is for the apple trees, so that they bear a good crop in the autumn to come. To give them a promising start, Wassailers bang pots and saucepans en route to the orchard to drive out any evil sprites and spirits that may be lurking. The proceedings are led by Mother Orchard (AKA Charlotte Rathbone). She oversees a ritual performed by two young people from the school, who are appointed the Lord and Lady of Misrule for the evening. This is another ancient tradition that reflects a time when the social order was turned upside down for a night to encourage a spirit of merriment and mayhem.

### The ceremony

After the singing of traditional Wassail carols and chants, the Lord and Lady of Misrule beat a chosen apple tree with a stick. Traditionally this was to awaken it from its winter hibernation. In reality, the trees stay dormant until around early March. A stick is then used to pierce a piece of toast which is dipped in the orchard's own apple juice before being placed in a fork in the tree as an offering for good health. The apple juice is carried in a special hand-turned oak Wassail cup and the Lady of Misrule pours the remaining juice around the base of the tree in a circle of life gesture.

### Free refreshments to warm you up

The Wassail is not over until we have shared with our Wassailers some mulled apple juice from our own apple trees. A January evening can be a bit chilly, we provide mulled apple juice and hot dogs, served by the Modbury Cubs, are always welcome. All refreshments are provided free of charge. We welcome donations to cover the Modbury Community Orchard Group's costs.

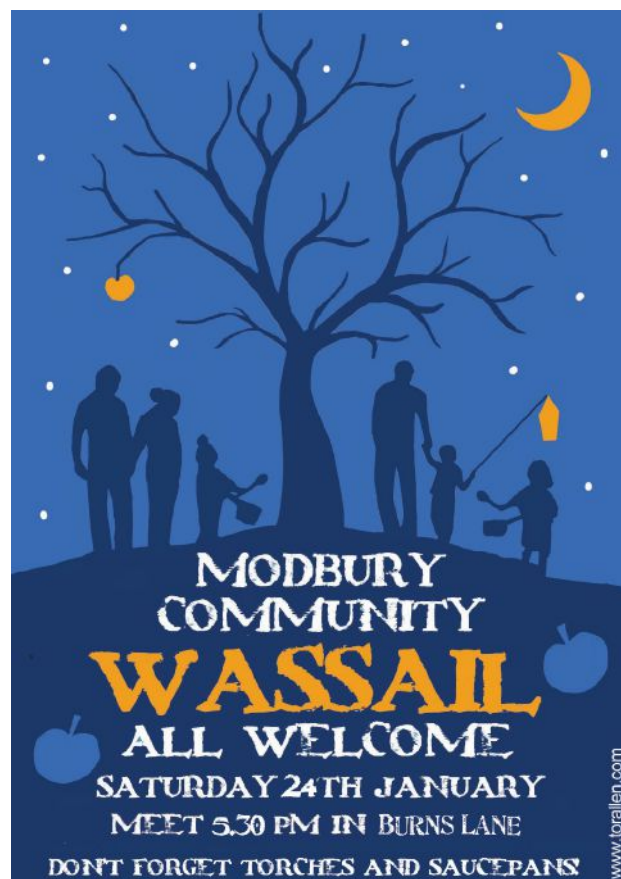
### Where to join the Wassail

Wassailers meet in Burns Lane by the Co-op at 5:30pm. Bring warm clothing and appropriate footwear as it can be a bit wet underfoot. Bring torches or lanterns to help light you way as we process from Burns Lane to the Millennium Meadow Orchard. Along the way, have ready your pots or pans, and sticks to bang them with, so as you enter the candle-lit orchard you scare off any unwanted sprites and spirits that might affect the trees.

### How to look like a seasoned Wassailer

Simply take a suitable hat and decorate it with trails of ivy, ferns and berry twigs foraged from the hedgerows. Add you own eclectic nick knacks or lights, if you prefer. Anything goes. Nothing is too over-the-top.

Come and join your fellow Wassailers and cheer up a drab month of the year.



**Colin Whybrow, Modbury Community Orchard Group**

## walk&talk

Walks will be on 6th, 13th, 20th and 27th January.

The venue and travel arrangements for each of the walks will be discussed at the previous week's walk and decided according to the weather forecast for the walk day.

Walk leader contact details:-

Sue Rogers 01548 831289

Jean Wright 01548 810029

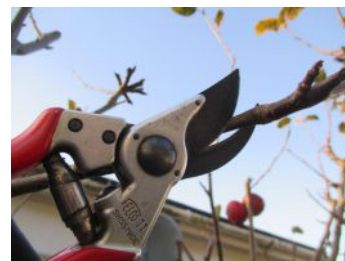
**Sue Rogers**



## Free Apple Tree Pruning Workshop – Saturday February 14<sup>th</sup>

This is an opportunity to sharpen up your secateurs and your pruning skills at the same time.

The Modbury Community Orchard Group is running a pruning workshop on Saturday 14<sup>th</sup> February. Actually, it's our orchard-pruning guru, Charles Staniland, who will be running the workshop for us. His knowledge is immense. If you have your own apple trees you'll find out just how to prune them for improved vigour and cropping.



The workshop is **free of charge** and you will be able to hone your improved pruning skills on some of the trees in the Millennium Meadow's orchard during the session, which will run from 10:00am - 1:00pm, when we will take a pause – please bring your own snack lunch. We will provide apple juice from last autumn's pressing.

### Here's your part of the deal

In return for the free workshop, we ask that you stay on for a couple of hours after the break to help prune a few more of the trees in the orchard. We have not run a workshop for a few seasons... and it shows. Some of the trees, although fruiting well in 2025, are in a bit of a tangle and need to be opened up to let more air and light through them.

We will have a limited number of secateurs, pruning saws and pole pruners, but please bring your own if you have them. Ensure the blades are clean and sharp. We also suggest you bring gardening gloves and some stout footwear as the entire orchard is on a slope.

The Community Orchard Group is always keen to engage children in our activities, but the nature of the pruning task and the use of secateurs and saws by multiple people in a relatively small space means we advise that only competent older children attend and they must be under the supervision and responsibility of the adult accompanying them at all times. We do not have the resources to supervise them.

We will meet at the foot of the Millennium Meadow at 10:00am for a briefing prior to the workshop starting. Please join us for what we hope will be a very satisfying and rewarding workshop session.

So that we have an idea of numbers attending, please contact the Community Orchard group by phone or email to book your place. [cwhybrow@btconnect.com](mailto:cwhybrow@btconnect.com) 07808 582 224.

**Colin Whybrow**

Anna  
Plymouth & South Hams

bluebird  
care®

Inspected and rated  
Outstanding ☆  
Care Quality  
Commission

*Expert care. In the  
comfort of home.*

See how our Live-in Care  
services can help your loved ones  
stay in the place they feel best.

Call us for a friendly chat on

**01752 347 700**



*It's good to  
be home*

Or visit  
[plymouth@  
bluebirdcare.co.uk](mailto:plymouth@bluebirdcare.co.uk)

## MODBURY CRIES - From our Town Crier

OYEZ OYEZ OYEZ

My Lords, Ladies, Gentlemen, Air Force Aviators, Artillery Armourers, Britain's boxed Battalions, Chaplains Clergy, Commonwealth Comrades, Dragoon Dukes, Fusilier Fellows, Guardsmen, Generals, Marine Members, Model Makers, Senior Service Shipmates and War-Game Warriors.

In the August Modbury Messenger edition, many will have read that the Modbury Toy Soldier Shop was moved from Brownston Street across the zebra crossing into Church Street and the very last military-model-soldier Toy Shop in the United Kingdom is now having its formal opening today on the 28<sup>th</sup> day of the eleventh month in the year MMXXV – 2025.

We are here to wish Gerry McAllister well with all his endeavours here in the Heritage Market Town of Modbury in the Parish of St George, the patron saint of England, made famous as being the first town to ban plastic bags on 1<sup>st</sup> day of May in the year 2007 in the year of Our Lord. It is good to have this unique shop here in the centre of our town and we all wish Gerry every possible success here as the newly revamped sign of Mr. McAllister's Amazing Toy Soldier Emporium is at last positioned above this double fronted shop at No 5, here in Church Street, Modbury.

Three cheers for Mr. McAllister's Amazing Toy Soldier Emporium!

**David Scott**

## Eighth Modbury Christmas Craft Fair

The eighth Modbury Christmas Craft Fair took place at the Memorial Hall on the 29th and 30th November. On each of the days we had 22 different makers, which resulted in a wonderful variety of goods available to purchase by customers who came to the fair.

So who were some of the crafters? Richard Bent is a blacksmith who has won many national competitions. Besides the great items he makes, he also teaches blacksmithing. David Ratcliffe from Devon Pens makes incredible pens using wood from old navy boats. Jane Watts from Another Shed Production makes high-quality leather handbags, key rings, wallets, belts and other goods. Wendy Francis and friends were there with all their hand knitted items. The toys they knit are stunning and really make fabulous Christmas presents. All her proceeds are donated to St Luke's Hospice. The amazing illustrator, Lucy Rose, brought the most lovely illustrated books, as well as tea towels and oven gloves. Caroline Barker was selling her beautiful cards, prints and a 2026 calendar (very useful) as were our other local print makers and illustrators, Nigel Grist and Tor Allen. We had three ceramicists/potters together with toy makers, jam makers, basket makers, jewellery makers and Christmas decoration makers.

Not only was the fair a great exhibition of crafts, but there was great camaraderie amongst the makers. A lovely buzz.

We had tea and coffees going, with delicious mince pies made by Pauline Ryder (people were buying them by the half dozen), a fabulous Bakewell Tart made by Sarah Wyatt and a vegan apple cake made by Tim Auburn (amongst other cakes).

I wish to thank Pauline, Sarah and Lynda for their help in making this fair the successful event it was.

**Marina Auburn**



## Holbeton Film Club



### MR. BURTON



January's film is **Mr. Burton** (certificate 12A). Based on a true story, teacher Philip Burton mentored a young, troubled schoolboy named Richard Jenkins with an alcoholic father and deceased mother, in Port Talbot, helping him to transform into the legendary actor Richard Burton.

This is screening on **Saturday 10<sup>th</sup> January 2026** in Holbeton Village Hall. Doors open 7pm. The programme starts at 7:30pm. Tickets on the door are £4 for adults and £2 for accompanied children under 12 (card or cash). Ice creams on sale for £1.

Our programme continues with:

Downton Abbey: The Grand Finale\*, PG

Juror #2, 12A

Wicked, PG

Ocean with David Attenborough, PG

Friday **20<sup>th</sup> February** (***please note the day in the month***)

Saturday 14<sup>th</sup> March

Friday 10<sup>th</sup> April

Saturday 9<sup>th</sup> May

**\*Also please note that this has replaced The Penguin Lessons, which has been deferred**

01752 830274, [harryluson@gmail.com](mailto:harryluson@gmail.com)

<https://holbetonfilmclub.com/>

**Harry Baumer**







## MODBURY LIGHTS

Well, the lights went on and Christmas has come. The town centre was absolutely packed, inside and out, to enjoy the children's lamplight procession with Plymouth Pipe Band - and it didn't even rain!



Herewith some public comments on the evening's events:

*"It really was a fab night!! Amazing atmosphere."*

*"We had a great time what a wonderful evening!"*

*"We just wanted to say the biggest, heartfelt thank you to everyone who came to see us this evening in our shop."*

*"Last night, was probably my favourite Modbury switch-on since we moved to the area six years ago."*

*"Modbury lights night is everything that's great about living and trading here. Mayhem and madness with friendly faces from near and far."*

*"Loved the mince pie, ate it for breakfast."*

Since someone also said "Special thanks to the organisers and marshals" I can name: Phil Smith for organising the elves who erected the lights and trees (Phil A, Phil S, TP, Harry, John, Mark, Martin, Mike, Paul, Ira, Michael, Richard, Colin, Fiona) and marshals (in addition Rob, Mike W, Harriet, Richard T, Gerry, Jennifer, Boony, Alan, Emma R, Jamie, Pete S, Lynda, Tim, Marina, Paul E, Peter L, Margaret); Dressed-up collectors (Malc, Jackie, Fiona, Emma), Peter Lowe for pulling the evening together; all those traders and individuals, and the main sponsor Luscombe Maye, who contributed to the cost of the evening; and Santa for popping down early from the North Pole . I know, I've missed you out - sorry!

**Tony Price**





**Sarah Wyatt**  
Independent Civil Celebrant

Weddings, Namings, Vow Renewals,  
Funerals – Celebration of Life

MAKING MEMORIES WITH BEAUTIFUL CEREMONIES

Tel: 07794662903 Email: [circlecelebrantsarah@gmail.com](mailto:circlecelebrantsarah@gmail.com)  
[www.circlecelebrancy.co.uk](http://www.circlecelebrancy.co.uk)





## Memorial Hall Play Park – New Fence

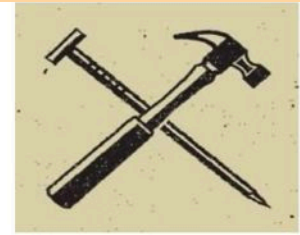
Back in the November Messenger, we advised readers that we were having to close the Memorial Hall play park for a short time to renew the old and dilapidated safety fencing between the upper and lower play areas.

The new fence was installed by our contractor, Leaf it Out (SW) Ltd of Plymouth, during week commencing 24 November and we are delighted with the results. The fence itself was manufactured by Jacksons Fencing, a well-known national company, and comes with a long warranty against rot and instability.

The new fence looks very smart as the accompanying photos confirm.

Thank you to James Gordon of Leaf it Out and Pauline Ryder on behalf of the Memorial Hall Committee for their help in making this a successful project.

**Phil Smith, Modbury Parish Council**



### Craig Kensett

Highly Experienced Carpenter

Home Improvement  
Custom Carpentry  
CIS Site Construction  
Projects Managed

Happy to discuss all types of work

07500 115177

[craigkensett@btinternet.com](mailto:craigkensett@btinternet.com)

## AUNE VALLEY IN MODBURY

6 Church Street, Modbury



Free Local Delivery\*

\*Terms & conditions apply.

10%  
Off  
with this advert\*

Bring this with you to receive 10% off in the shop or café. Terms & Conditions Apply

[www.aunevalleymeat.co.uk](http://www.aunevalleymeat.co.uk)



# FLINT GARDENING SERVICES

*Local, friendly, professional.*

Tom Flint, RHS qualified gardener, has recently moved to Modbury.

Tom offers practical, hands-on advice backed by insurance and years of experience.

With a team of hardworking, knowledgeable gardeners on hand to help, Tom is delighted to offer Modbury residents:

- Weeding
- Pruning
- Hedgecutting and laying
- Lawncare and maintenance
- Chainsaw/tree work (NPTC insured and qualified)

Please call Tom for a friendly, no obligation chat.  
0785 232 6786 email [tpcf.flint@btinternet.com](mailto:tpcf.flint@btinternet.com)



**Including:**

**Stone Walling • Retaining Walls • Groundworks  
Drainage & Irrigation • Driveways  
Patios & Paths • Gates • Fencing & Decking etc**

Family Business Since 1976  
Company No.3942610

**Competitive Quotes Given, Full Insurance**

Gatcombe Mill - Littlehempston - Totnes - TQ9 6LW

**Office:** Tel- 01803 864 871  
**Email:** [enquiries@afbrown-sons.co.uk](mailto:enquiries@afbrown-sons.co.uk)  
**Web:** [www.afbrown-sons.co.uk](http://www.afbrown-sons.co.uk)



Please come and try our new milk and milkshake  
vending machines at Bigbury on Sea

**3 sizes of glass bottles available**

Fresh milk and hand crafted ice cream  
from our organic cows

**Open 24/7 - Please call in**

Milk - Ice Cream - Eggs - Vegetables - Meat

**Straight from the farm @mountfollyfarm**



**Do you or a loved one need a little  
extra help?**

**WE ARE HERE TO HELP**

Carers Direct SW Ltd is local not-for-profit care  
team of dedicated, well trained, friendly, local  
carers.

**We can provide from one hour to 24-hour care.**

Tasks undertaken include personal care, meal  
preparation, prompting medication,  
appointments and social outings.

**Contact us for more information on:**

01548 854358 or Email. [office@carersdirect-sw.co.uk](mailto:office@carersdirect-sw.co.uk)

**You are welcome to pop in and see us at our office:**

**Unit 2N South Hams Business Park, Churchstow,  
Kingsbridge, Devon TQ7 3QH**

**CARERS DIRECT (SW) Ltd**

**Est. independent  
LOCAL ELECTRICIAN**

**Dependent, honest  
and reliable service**



- Complete rewires and new builds
- New 18th edition Consumer Units/Garage Units
- Landlords & Insurance Certificates
- Domestic electrical fault finding
- Specialising in garden, kitchen and floor lighting from planning to certification

All work guaranteed/certificated  
Fully insured, qualified &  
registered with NICEIC



**Call Phil for a free, no obligation quote or callout**

**Tel: 07769 840012**

**Email: [lightworks.electrics@gmail.com](mailto:lightworks.electrics@gmail.com)**



## To Modbury and Beyond

I had just returned from my two-months' stay in Croatia only to be catapulted into space, along with dozens of other Modbury earthlings. The wonderful Modbury Players put on a brilliant singalong show on 14th and 15th November. The show was sold out on both days, and for a good reason.

The singalong was based on the same theme as the 2025 Modbury May Fair, held earlier in the year: Space. Written by Mandy Field, Space was her debut musical show. A summary of the plot: The Starship Enterprise was boldly going in search of new life, but must save Earth – particularly Modbury – from the evil Elon Tusk and the Martians. Meanwhile, Captain Kirk is pining after Princess Leia whilst an early version of Dr Who (was there any doubt it was Tom Baker?) transports himself to offer his views. And of course, Buzz Lightyear tries to send everything into infinity and beyond, whilst the Enterprise crew are trying to keep its dilithium crystals from over-heating. First officer Spock offers advice and gives his double-finger salutation (with the help of some sellotape!).

Whilst the plot unravelled, it was interspersed with space-themed well-known songs such as: Spaceman, Star Trekking, Space Oddity, Life on Mars, Flash etc.

So that the audience could join in, the words were projected via the laser display. It was the first time I saw the words to David Bowie's songs. What doggerel! (apologies to all Bowie fans). Despite this, the audience joined in the singing with great gusto. We also joined in the actions to Superman, waving, sleeping, being macho man, ringing bells, skiing and so on.

All in all it was a performance delivered with much enthusiasm and verve, and we got rid of the Evil Elon and his Martians. Besides delivering the Tesla, what did Elon ever do for us?

Many thanks to the cast and the production team for giving their time so generously to entertain the Modbury Earthlings.

**Marina Auburn**







Visit us at our dedicated Wellness Sanctuary

**Blissful Yoga.  
Workshops & Events.  
Coffee & Shopping.**

[WellnessWarriorsYogaStudio.co.uk](http://WellnessWarriorsYogaStudio.co.uk)

Modbury High Street, 2C Broad Street, Modbury PL21 0PS



# Winter Fuel Store

**KILN DRIED LOGS  
SMOKELESS FUELS  
ECO BRIQUETTES  
KINDLING & FIRELIGHTERS  
CALOR GAS STOCKIST**

**PARKLAND**

**01548 852723**

**SORLEY GREEN**

**07968 222008**

**KINGSBRIDGE**

**DEVON**

**TQ7 4AF**

[info@winterfuelstore.co.uk](mailto:info@winterfuelstore.co.uk)

[www.winterfuelstore.co.uk](http://www.winterfuelstore.co.uk)



Winter  
**Fuel  
store**



**ERMINGTON HOUSE**  
Quality Residential Care



Ermington House

***Quality Care 24 hours a day in an idyllic location***

- 24-hour Person-Centered Care
- Highly trained, caring and attentive staff
- Daily stimulating entertainment and activities
- Home cooked, nutritional and appetizing meals
- Safe and secure environment
- Daily visits by District Nurses
- Regular visits by Chiropodist, Hairdresser, Dentists, Opticians and GP's
- Beautiful personalized en-suite bedrooms
- Respite and Long-term Care

**Ermington House, Ermington Nr Ivybridge, Devon PL21 0LQ**  
**Email: [enquiries@garad-carehomes.co.uk](mailto:enquiries@garad-carehomes.co.uk) | Tel: 01548 830076**  
**[www.ermington-house.co.uk](http://www.ermington-house.co.uk)**



## Fresh Milk Always Available at Mount Folly Farm

Mount Folly Farm has opened up a new vending shed on the farm at Bigbury-on-Sea, selling fresh milk, milkshakes and ice cream from their own dairy as well as their own eggs, meat and vegetables.

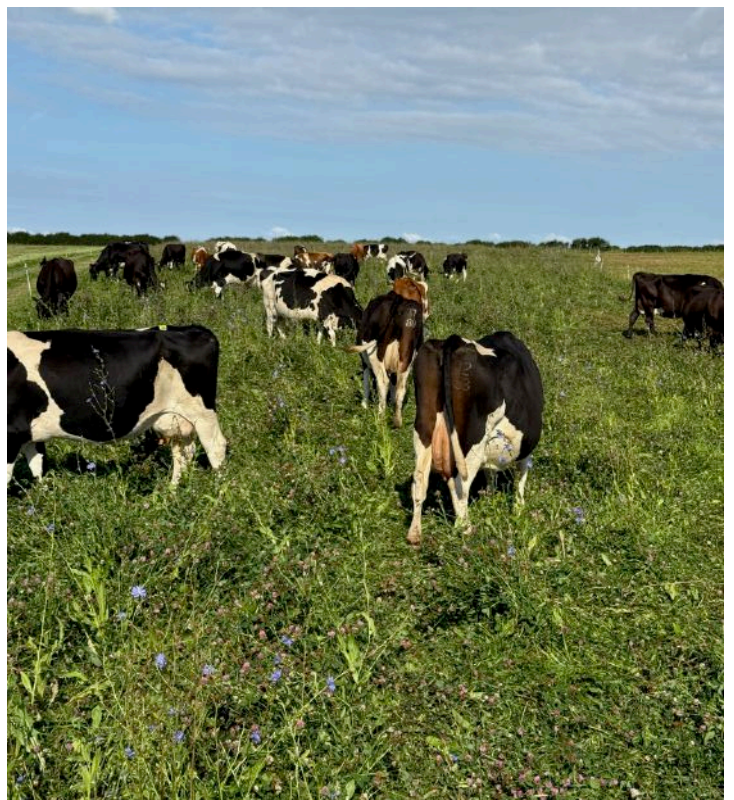
The farm has set up this new dairy venture using a mobile milking parlour. All this is being instigated by Coral (the next generation), coming back to the farm to set up and run this new enterprise. The cows are moved around the farm to graze, and the parlour follows them, so the cows can be outdoors, grazing wherever the grass is growing in the season.

Mount Folly is an organic and very mixed farm with beef suckler cows, sheep, arable crops, chickens for eggs and winter vegetables, most of which are supplied to Riverford Organic for their box delivery scheme. This new farm-shop shed allows the farm to provide organic farm produce to locals and visitors alike. You can drop in whenever you like, as it is self service and open all the time.

There are a few products from other super local suppliers too such as Frothed Coffee, South Devon Chilli Farm jam, chocolate and sauces, Herb Heaven Devon candles & tea, Heron Valley drinks and cider vinegar, Sharpham cheese, Open-Air Dairy Cheddar, South Devon Lavender and cakes from Fern, a member of the family.

So if you're heading to Bigbury to get some fresh air please call in and have a look.

**Cathy Case**





## INTENDED MONTHLY FLAG HOIST AT PALM CROSS GREEN - January

<u>Date</u>	<u>Masthead</u>	<u>Starboard Yard (Plymouth) - West</u>	<u>Port Yard (Modbury) - East</u>	<u>Event</u>
16	Army	CORUNA	1809	Battle of Corunna 1809
25	Scottish Saltire	BURNS	Scottish Lion	Burns Night
26	Australia Flag	AUS3 <sup>rd</sup> subIE	1782 <sup>nd</sup> sub	Australia Day 1787
27	Poppy Flag	HOL2 <sup>nd</sup> subCAST	1945	Holocaust Day 1945

### Modbury Messenger February 2026

The copy date for the February 2026 Modbury Messenger is 10th January Please email all articles, notices of events and paid advertisements to [modburymessengercic@gmail.com](mailto:modburymessengercic@gmail.com).

The Modbury Messenger is published by Modbury Messenger CIC and is printed by ESP Print. The views expressed in the Messenger do not necessarily represent those of Modbury Messenger CIC.

The Editorial Committee reserve the right to précis/abbreviate any copy submitted for inclusion in the Modbury Messenger. Their decision is final. The contents of the Modbury Messenger may not be reproduced in any form without the prior written permission of Modbury Messenger CIC. Guidance for submitting material is available online at <http://modburymessengercic.co.uk/about.html>

**Persons submitting entries with art or photographs not drawn or taken by themselves must confirm they have obtained copyright permission, or agree to pay any copyright fine which is subsequently raised**

[modburymessengercic@gmail.com](mailto:modburymessengercic@gmail.com)



# MODBURY MESSENGER

### COMMERCIAL ADVERTISING RATES MODBURY MESSENGER 2026

SIZE	Size - can be portrait or landscape	1 month (per insertion)	3-11 months (per insertion)	12 months (per insertion)	12 months (Year total)
1/8 page	45mm x 65mm	£30	£26	£16	£192
1/4 page	90mm x 130mm	£60	£50	£30	£360
1/2 page	130mm x 180mm	£108	£86	£50	£600
1 page	180mm x 250mm	£192	£148	£80	£960

The Modbury Messenger is an all colour publication, no preferential rates for black & white advertisements.

To advertise in the Modbury Messenger, contact the Editor, Lynne Barnes, via email on [modburymessengercic@gmail.com](mailto:modburymessengercic@gmail.com) with details of the size of the advert and how many months you wish to advertise for.

### MODBURY MESSENGER CIC

Modbury Messenger CIC is a Community Interest Company and as such is registered by the Registrar of Companies for England & Wales, Northern Ireland or Scotland. A Community Interest Company is a special type of not-for-profit limited company which exists to benefit the community. The purpose of Modbury Messenger CIC is to disseminate information about events, notices and articles of interest to the people of Modbury and it does this by publishing the Modbury Messenger, a printed newsletter, every month with 1000 copies delivered to homes and businesses within the Parish of Modbury. An online copy of the Modbury Messenger is available to neighbouring communities, advertised via social media and on our website [modburymessengercic.co.uk](http://modburymessengercic.co.uk).

Advertisers are charged a fee for advertising in the Modbury Messenger and this covers the cost of producing the Modbury Messenger. The Board of Directors, Company Secretary, Editor, Proofreaders and Distributors are all volunteers.

**Directors of Modbury Messenger CIC:** Diana Lynne Barnes & Bernard Taylor.

**Company Secretary:** George Rosevear FCIS.

**Editorial Committee:** John Bower, Lynne Barnes, Ira Young.

Modbury Messenger CIC has produced the Modbury Messenger as an independent CIC since September 2018. Previously, it was published by Modbury Parish Council.



# THE FLOOR SHOW



Your Local South Hams  
**Carpet & Vinyl Flooring Experts**

7 Church Street, Modbury,  
Devon. PL21 0QW

**01548 830909**

[thefloorshowmodbury@gmail.com](mailto:thefloorshowmodbury@gmail.com)

[www.thefloorshowmodbury.co.uk](http://www.thefloorshowmodbury.co.uk)

## GREENLANDS NURSERY

Higher Wizaller, Modbury, PL21 OSE



**Shrubs and Perennials**

**Godwins Professional**

**Peat Free Compost**

**Planted hanging baskets**

**Holly wreaths at £10 & £12 each**

Deliveries can be arranged

**Local family run business excellent value**

Tel: 01548 550491 or 07534 611587

Email [brendagreenlandsmodbury@yahoo.com](mailto:brendagreenlandsmodbury@yahoo.com)

We also have a good selection of marble based garden ornaments



- Bathroom and kitchen fitting
- Floor and wall tiling
- Leaking toilets/radiators/taps etc
- Radiator replacement and additions
- Shower pumps
- Links with local builder/electrician for larger installations if required

## Chapman & Sons Plumbing Service

**Small jobs welcome**

**Reasonable rates**

**Free quotes**

**Telephone 07468 466380 now  
for a speedy and efficient service.**

  
**MARCHAND PETIT**  
COASTAL, TOWN & COUNTRY

For customers who expect more  
from their estate agents.

Our Modbury team has a wealth of South Devon  
Estate Agency experience, covering the coast and  
countryside.

Whether you're looking to buy or sell, contact our  
friendly and knowledgeable team today.

**SALES | LETTINGS | AUCTIONS**

01548 831163 | [modbury@marchandpetit.co.uk](mailto:modbury@marchandpetit.co.uk)

4 Broad St, Modbury, Ivybridge PL21 0PS

[www.marchandpetit.co.uk](http://www.marchandpetit.co.uk)





HELEN MOORE  
PROPERTY

POWERED BY  
**exp** UK

Independent Estate Agents

Over 100 years combined  
experience

Local. Approachable. Honest.

 01752 962162



MODBURY  
DENTAL PRACTICE

## OUR SERVICES

- Cosmetic Dentistry
- Dental Implants
- Restorative Dentistry
- Hygiene Services
- Orthodontic Aligners
- Same Day Emergencies
- Root Canal Treatment
- Extractions
- Dentures
- Tooth Whitening
- Facial Aesthetics
- Membership Plans

## MODBURY DENTAL PRACTICE

*Tailored dental treatments for the entire family*

### Practice Plans

Our plans allow you to spread the cost of your dental exams and hygienist visits into monthly payments.

### Finance Options

We offer a 0% APR finance so you can spread the cost of your dental treatments in affordable payments.

## NEW PATIENTS WELCOME

4 Broad St, Modbury, Ivybridge PL21 0PS

Tel no: 01548 830811

Mon-Fri | Private appointments only

[www.modburydentalpractice.com](http://www.modburydentalpractice.com)