



Illustration - Paddy Wynder

For the People of Modbury & Brownston

Volume 22, Issue 285 - December 2022

Shops Open Until 8pm

MODBURY
LATE NIGHT CHRISTMAS SHOPPING

Thursdays in December

SUPPORT YOUR LOCAL SHOPS THIS CHRISTMAS!

1st - 22nd

MODBURY TENNIS CLUB

With our splendid newly-surfaced tennis courts at the QEII Recreation Ground, we are now investigating, along with MARS, a significant project to install floodlighting to extend the period of use for tennis, and possibly other activities, later into the evening and especially during the winter months.

It would be really useful if we could gain some information from our community, as a whole, about who would potentially support and use the facility if floodlighting were to become available.

If anyone in your household (adults and children) thinks that they would use the courts in this way, either now or in the future, we would love to hear from you by either: sending an email to info@modburytennisclub.uk simply stating "Floodlighting of courts – yes please" and add any other comments as you wish. If you have no access to e-mail, telephone Lynn Weeks on 830007 with any comment (can leave a message if out).

Thank you

MODBURY TENNIS CLUB COMMITTEE

Looking to make your Christmas extra special?
Then look no further!

Bronze, free-range turkeys traditionally reared and prepared on our family farm for the finest flavour at Christmas.

Collect your turkey direct from the farm (**Kingston**) or at one of our collection points: **Lee Mill, South Brent or Wembury.**
Delivery also available

Order now by contacting The Walters Family:
(01548) 810259 or turkeysfromdevon@gmail.com
Or online: www.turkeysfromdevon.co.uk

Accredited and annually inspected for high welfare and traditional quality by the Traditional Farmfresh Turkey Association

Fitness studio & 24/7 Gym

BOMBERS
PHYSICAL TRAINING

Unit A
Pearse Gardens
Modbury
PL21 0FX

Over 100 5 star reviews

Contact us to book your 'No Sweat Intro'

www.bomberspt.co.uk gym@bomberspt.co.uk



GEORGE H.W. ROSEVEAR
& COMPANY
A DIVISION OF HOLBROOK ASSOCIATES

ACCOUNTANCY, TAXATION AND
COMPANY SECRETARIAL SERVICES

01548 831427

3 MODBURY COURT, 32 CHURCH ST.,
MODBURY, DEVON, PL21 0QR
george@holbrookass.com

Tall Orders Landscaping

All aspects of gardening

- *Hedge trimming / Tree work
- *Grass cutting - Lawns to Paddocks
- *Fencing / Turfing / Stump grinding
- *Weed control / Lawn Scarifying

Logs Supplied

- *Locally sourced hardwood
 - *Delivered in dumpy bags / nets
- Tel . 01548 831139 / 07967258318



VEG PICKERS WANTED!

ORGANIC FARM AT BIGBURY

Mon-Thurs 8am-4.30pm

Fri 8am-3.30pm

Winter harvesting work,

September-April

Planting and weeding
in the summer months



Ring Cathy
01548 810079
07830 138133

MICHAEL HAGGER

Professional
Interior & Exterior Painter
& Decorator

*Friendly and reliable, trained to
City & Guilds Advanced Craft level
with 32 years experience*



Lankwells Farm
Burraton,
Ermington
Telephone:
01752 881438
or **07977445521**

Free estimates & References



South Hams
Wills & Probate

*Your local cost-effective
alternative to solicitors*

- Wills -
- Probate -
- Lasting Powers of Attorney -
- Inheritance Tax Planning -
- Trusts -

Call Vanessa (Chartered Accountant)
on 01548 858806
mail@southhamswills.co.uk
www.southhamswills.co.uk

Barnes Computer Services
bcs
Modbury

**Your one stop shop for all
your computing needs**

Do you need help with your
computer, mobile phone,
iPad or tablet?

Would you like to learn more?

Does your computer need
upgrading?

Contact us for professional
help at a reasonable price.

Chris 07722254064
Lynne 07806559465

bcsmodbury@gmail.com



Sarah Wyatt

Independent Civil Celebrant

Weddings, Namings, Vow Renewals,
Funerals – Celebration of Life

MAKING MEMORIES WITH BEAUTIFUL CEREMONIES

Tel: 07794662903 Email: circlecelebrantsarah@gmail.com

www.circlecelebrancy.co.uk



Coastal
Garden Services

Tree Surgery & Landscape Management

Contact: Andy Walker on 07793 056898

Working in the South Hams for over 10 years

Fully insured to £5million

NPTC & RHS qualified



Windbag the Sailor – A Modern Pantomime

At Modbury Memorial Hall

Wednesday 21st December
7:30pm

Thursday 22nd December
7:30pm

Friday 23rd December 2:30pm
and 7:30pm

love island



Ticket price:
£10 Adults
£5 Children


Tickets sold at The Brownston
Gallery from 21st November

WILKINS
ESTABLISHED 1888
CHIMNEY SWEEP

- TRADITIONAL SWEEPING SERVICE
- NESTS REMOVED
- CAGES, CAPS AND COWLS FITTED
- CCTV SURVEYS
- SWEEPING CERTIFICATES ISSUED
- PROFESSIONAL, CLEAN SERVICE
- FULLY INSURED
- POLICE CHECKED

01752 895949  

wilkinschimneysweep.co.uk/southhams 

MARTIN LEY
PLUMBING & HEATING

- Oil Installations, Servicing & Repairs
- Unvented Cylinders
- Bathrooms & Showers
- General Plumbing


Tel: Modbury 01548 830609
Mobile: 07811 934551

Unwind Hair
Bigbury
Ladies - Gents - Children

Unwind Hair would like to welcome our new, experienced stylist Kirsten.

Please call any time to book your appointment.

We look forward to seeing you.



www.unwindinbigbury.co.uk 01548 810 000
unwindinbigbury@mail.com 07786860440

Designed Space Ltd

Architectural Drawings and Planning Applications

Contact Alayne Harris B.I.D.
0755 191 0874
info@designedspace.co.uk

Based in Modbury

BIGBURY CAMPING BARN




Short stays and weekend breaks.
Group accommodation with flexible indoor space, TQ7 4AP.
Contact Cathy 015 48 810079
info@bigburyholidays.co.uk
www.bigburyholidays.co.uk

ARE YOU PAYING TOO MUCH TAX ?
ARE YOUR ACCOUNTS AND TAX AFFAIRS UP TO DATE ?
ARE YOUR ACCOUNTING SERVICES COMPETITIVE ?

FOR A SERVICE SECOND TO NONE CONTACT

MARTIN E RANWELL, FCA
ELLIOTT & PARTNERS
ACCOUNTANTS AND TAX CONSULTANTS

KINGSWAY, 10 THE PRIORY,
MODBURY PL21 0TL
AND AT 6 MODBURY COURT, 32 CHURCH STREET
T. 01548 830432 M. 07763 526814
e-mail : martinranwell@googlemail.com

EXTENSIVE EXPERIENCE IN BOTH COMMERCE
AND THE PROFESSION
ALSO PROPERTY MANAGEMENT SERVICES

- Bathroom and kitchen fitting
- Floor and wall tiling
- Leaking toilets/radiators/taps etc
- Radiator replacement and additions
- Shower pumps
- Links with local builder/electrician for larger installations if required

Chapman & Sons Plumbing Service

Small jobs welcome
Reasonable rates
Free quotes
Telephone 07468 466380 now
for a speedy and efficient service.

GREENLANDS NURSERY
Higher Wizzler, Modbury, PL21 0SE

Shrubs and Perennials
Holly Wreaths. £8 & £12
Non drop Christmas Trees
£5 per foot
Jack's Magic Compost




Deliveries can be arranged
Local family run business excellent value
Tel: 01548 550491 or 07534 611587
Email brendagreenlandsmodbury@yahoo.com
We also have a good selection of marble based garden ornaments

MODBURY PARISH COUNCIL REPORT



An abbreviated report of the Modbury Parish Council Meeting on Tuesday 1st November 2022, 7:00pm at The Pavilion, QEII Recreation Field. The full minutes will be available on the Parish Notice Board and website in due course.

MODBURY
PARISH COUNCIL

Six members of the Parish Council were present, along with 10 members of the public including three representatives from Bakers Estates who will be developing the Penn Parks area to the west of Modbury, just off Plymouth Road.

The meeting started with a short presentation from Baker Estates concerning a footpath to the proposed new development at Penn Parks. The original plan was for a path through the industrial site but SHDC are against this so an alternative plan was proposed. This would require a new right of way which is being proposed which is conditional on getting approval for the new Penn Park development. This, and the makeup of the path will be discussed at a future meeting.

Public Forum: The Chair and Secretary of the Modbury Traders expressed concerns about the proposed three month road closure of Church Street and Broad Street and the impact this will have on the residents and businesses. The need for the work is understood and the Modbury Traders want to work alongside Modbury Parish Council to get the best solutions. A meeting is being held on the 22nd November with South West Water (SWW) to discuss the situation; and the results of this will be reported back,

Two residents objected to planning application 3479/22/FUL (Provision of poultry building & associated infrastructure). They considered that this third application still did not address concerns documented previously, and they were concerned that work was already taking place.

Devon County Councillor's Report: Rufus Gilbert brought attention to the escalation of the Avian Influenza epidemic. In addition, he has ensured that everyone had seen the latest press release from Devon County Council regarding the financial situation of the Council.

District Councillor's Report: Bernard Taylor said the Council Tax Reduction Scheme is progressing well, but SHDC would like help to ensure everyone is aware of the scheme.

The Barracks Wall fencing is now complete.

Planning

| | | | |
|-------------|------------------|--|-------------|
| 3290/22/LBC | Brownston Street | Listed Building Consent for repair and refurbishment | |
| | | No Objections but concern that this was a retrospective application | |
| 3354/22/TCA | South Traine | Tree work | Supported |
| 3479/22/FUL | Trehele Cross | Provision of poultry building and associated infrastructure | |
| | | This application had been refused in the past, but most concerns had been addressed with the new application. Concerns were expressed concerning possible noise pollution and positioning in relation to the ANOB. | Objected to |

Finance Committee: A request for a grant for £82 from the History Society to update and maintain their web site was approved, but they would have to re-apply for subsequent grants.

The request for £500 from the Charterlands United Walking Football Club will be considered as part of the 2023-2024 budgeting process.

MPC will offer free parking in Modbury on the 10th, 17th and 24th December with MPC reimbursing SHDC the £432 in lost revenue.

Committees: The School and Barracks Road Safety Group: The school is unable to open the access on back street due to lack of resources and safeguarding issues. Concern was raised that with the road closure, the traffic along Barracks Rd will be increased, exacerbating the issues.

Parish Path Partnership: Work by the P3 volunteers has now resumed on the public footpaths in and around Modbury.

Ukraine Support Team: One family has settled in the town and is really happy with the welcome they have received. We have been asked to enquire whether anyone in Modbury would be willing to sponsor the husband's mother who is in her early 60s and currently residing in Rome.

The next Modbury Parish Council meeting will be on Tuesday 6th December at 7pm at the Pavilion, Queen Elizabeth II Recreation Ground. Members of the public are welcome to attend and may speak during the Public Forum; but must remain silent for the remainder of the meeting. Members of the public need to leave if there is a Part 2 of the meeting where confidential and/or commercially sensitive matters are discussed.

Chris Barnes

Modbury WI

At their November meeting, Modbury WI members were entertained by Rosemary Griggs, local historian and author, who gave an account of a Tudor Christmas dressed as Lady Katherine Champenowne. There will be no actual meeting in December, instead a Christmas lunch is booked for members at The Modbury Inn.

If you are interested in finding out more about what we do at Modbury WI, then please contact me for further information at rosiejaneparker@gmail.com. We normally meet on the second Tuesday evening of the month at the QEII Pavilion in Chatwell Lane, Modbury. In January and February, we will be doing things a little differently and the information will be available in the January edition of the Modbury Messenger.

Rosemary Parker



Modbury History Society

The Modbury History Society welcomed Chris Robinson, journalist and Plymouth historian, to its November meeting. Chris talked about early motoring in Plymouth up to the Second World War.

The December meeting is a Christmas treat and will be held at 7.30pm on Friday, 9th December at the QEII Pavilion in Chatwell Lane, Modbury. Gerry Mcallister from Mr McAllister's Amazing Toy Soldier Emporium will set up a special display for us and talk about 'Toy and Model Soldiers – History and Hobby.'

Membership is £20 a year or £5 for a guest at a meeting. Please email me for further information about the society and its programme:

rosiejaneparker@gmail.com

Rosemary Parker

canec

custom home electrical

With over 30 years experience, working closely with our clients, we find efficient solutions for your home

- Design • Installation • Testing
- Intelligent Lighting
- Home Data Networks
- Green Energy

Tel: 07731 689571 / 01548 821500

Email: simon@canec Ltd.com
www.canec Ltd.com

Insured
Compliant
Experienced



Modbury Clubs and Societies

If you would like to tell Modbury what happens at your club or society, then send us an email to

modburymessenger@canec Ltd.com

So if you want to spread the word, invite new members, ask for help, new volunteers or just tell us about an event, send in an article, create a poster or invite us in to see what you do. Send us photographs or even videos (we can put these on our website).

You can send a small piece that we can repeat each month, if we have space. It's all free.

MODBURY PARISH COUNCIL

Modbury Parish Council Office, 2 Galpin Street. PL21 0QA 01548 830222 email parishclerk@modburypc.co.uk

Your Councillors are:

| | | |
|-----------------------|--------------|--|
| Barry Keel | 07795 533704 | barrykeel@modburypc.co.uk |
| Helen Nathanson | | helennathanson@modburypc.co.uk |
| Barbara Price | | barbaraprice@modburypc.co.uk |
| George Rosevear | 01548 831427 | georgerosevear@modburypc.co.uk |
| Phil Smith | 07759282404 | philsmith@modburypc.co.uk |
| Dave Trigger | 07808742372 | davetrigger@modburypc.co.uk |
| Ann Turner | | annturner@modburypc.co.uk |
| Andy Walker | | andrewwalker@modburypc.co.uk |
| Peter Watts (CHAIR) | 07721 918129 | peterwatts@modburypc.co.uk |
| Rob West (VICE-CHAIR) | 01548 830135 | robwest@modburypc.co.uk |
| Jo-Anne Woodcock | 01548 831128 | jowoodcock@modburypc.co.uk |

How can we help you?

Councillors run drop-in surgeries on Saturdays 10 – 11am in the Parish Office at 2 Galpin Street. The Parish Clerk is in the Parish Council office on Tuesdays 10am – 4pm. Call into the office, phone, email or come along to our meetings on the first Tuesday of every month and speak in the public forum.

| | | |
|--|----------------|---|
| Devon County Councillor (Salcombe Division): | Rufus Gilbert | Tel: 01548 856659 rufus.gilbert@devon.gov.uk |
| South Hams District Councillor Charterlands Ward: | Bernard Taylor | Tel: 01548 830844 Cllr.Bernard.Taylor@southhams.aov.uk |



Modbury Mission Community

To know Jesus and make him known



St George's Church

Please check our website for our current opening times

www.modburyteam.org



pray

Welcome to St George's Church, Modbury

We are open every Sunday for public worship and the church is open every day if you wish to visit the building for a time of personal prayer and contemplation.

Everyone is welcome and you can find out more about what is on offer from our website www.modburyteam.org. If you want to speak to the Vicar, call Rev. Matt on 01548 830260 or email matt.rowland@modburyteam.org.

| December | Service | Service Leader |
|--|---|---|
| Sunday 4 th | 9.30am Holy Communion with Kids' Church | Rev Matt Rowland |
| Sunday 11 th | 8.00am Holy Communion BCP 9.30am All Age Service | Rev Matt Rowland Rev Matt Rowland |
| Tuesday 13 th | 6.00pm Pop up Carols and Christingle in Palm Cross Green Estate | Rev Matt Rowland |
| Sunday 18 th | 7.00pm Carol Service | Rev Matt Rowland |
| Christmas Eve Saturday 24 th | 3.30pm Family Nativity 11.00pm Holy Communion | Sara Chapman Rev Matt Rowland – there will be a visiting preacher, Rev James McKinnel Chaplain at Winchester College |

CHRISTIAN COMMENT: Celebrating Christmas

Peter Wilby was editor of the *Independent on Sunday* from 1995 to 1996 and of the *New Statesman* from 1998 to 2005 - and is an atheist. Yet he loves to celebrate the Christmas story:

'Nothing draws me more to religion than Christmas. That is not because I lose my atheist faith, but because I intensely dislike all the commercial baggage and babble that surrounds the festival. So, in a spirit of protest, I shall try to attend at least one carol service and possibly a Midnight Mass, too, as well as listening at 3pm sharp on Christmas Eve to the Radio 4 broadcast of the Festival of Nine Lessons and Carols from King's College, Cambridge.'

All religions have stories at their heart. Christianity, to my mind, has the best: an all-powerful God who chooses to be incarnated as a human, born in the most humble circumstances imaginable. Whether or not we are believers, we should all celebrate that story in the coming days and ponder its meaning.'

This Christmas you are very welcome to join us at any of our Christmas services for whatever reason brings you along. Yet my prayer is that as you hear the Christmas story once again, it would move from being a story to reality. That you would experience the God who gave himself to us at Christmas so we can know Him and find the life we were made for.

Happy Christmas!

Rev. Matt Rowland

SOUTH HAMS MOBILE LIBRARY

Saturday 10th December Poundwell Sq.
09:45 to 12:15

Tuesday No Mobile Library

Ayleston Park 14:45 to 15:30
Higher Green Park (Palm X) 15:35 to 16:35

Wednesday No Mobile Library

California Inn Carpark
09:10 to 09:30



St Monica's Roman Catholic Church, Modbury

Mass weekly at 12 noon on Saturday

St Austin's Priory Roman Catholic Church, Cadleigh

Mass weekly 11.30 am on Sunday

01752 895888

ivybridge@prcdtr.org.uk



ARE YOU LOOKING TO EXTEND OR IMPROVE YOUR HOME?

WOULD YOU LIKE TO KNOW MORE ABOUT PERMITTED DEVELOPMENT?

DO YOU NEED A DESIGNER WHO UNDERSTANDS YOUR NEEDS & BUDGET?



Architectural plans and designs

PERRY DESIGN SOLUTIONS

CONTACT FRANCIS ON 07811 287763
INFO@PERRYDESIGNSOLUTIONS.CO.UK



Modbury Tiddlers Playgroup

Come and say hello!

For families with children 0-4 years

Fridays – 9.15-11.15 at Modbury Memorial Hall

Last Friday of the month – out and about day

Term time only

Sensory play, crafts and a dedicated baby area
Dress up, ride ons, toys and more!
Monthly breastfeeding support with refreshments provided for adults and a healthy snack provided for children



Find us on facebook and instagram for up to date info each week
f Modbury Tiddlers @modbury_tiddlers
mail@modburytiddlers.org.uk



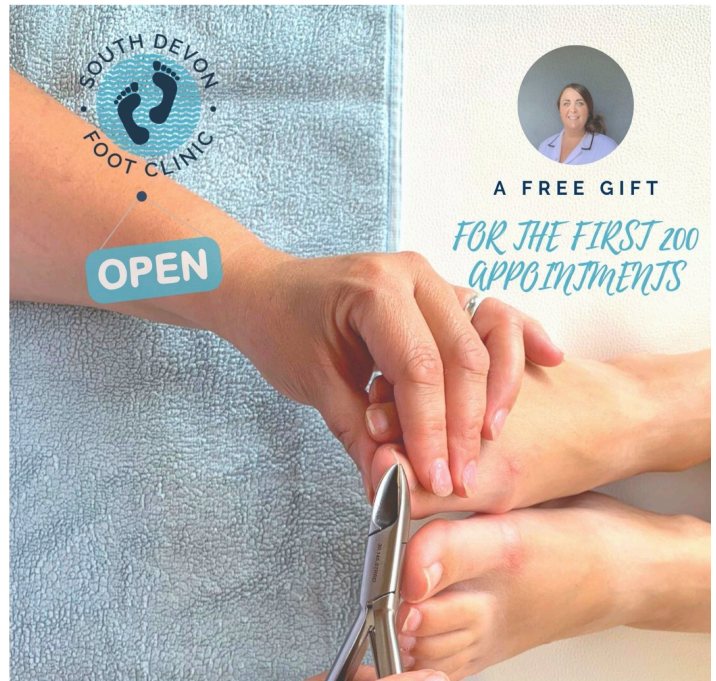
NOAH'S ARK Baby & Toddler Group

Wednesday Mornings
Term Time 9.30-11.00 am

The QE11 Recreation Ground
Chatwell Lane, PL21 0FS

Hot drinks • Home baked cakes • Baby weighing scales
Songs • Musical instruments • Bible story • Craft
Baking activity • Parachute games

Contact: louise_rowland@hotmail.com | 01548 830260



SOUTH DEVON FOOT CLINIC

PODIATRY / CHIROPODY SERVICES

Helping you take the right steps to better foot health...

15 Fore St, Yealmpton, Plymouth PL8 2JN

07827816203

southdevonfootclinic@gmail.com
www.southdevonfootclinic.co.uk



CHRISTMAS LIGHTS - A THANK YOU

The Christmas Lights team say a very sincere thank you to all those involved in the installation and the Lights-on night event.

The display would not be the same without the donation of a large tree by Colin Campbell, and without the loan from Wakehams of a cherry picker to enable us to install the large lit signs. The volunteer installers include those with years of experience and our new volunteers. They all work over two months in the wet and the dry to ensure the town centre looks bright and inviting over the Christmas festivities.

The event would not be possible without the dedicated marshals who control the traffic, some of whom never get to see the event. We thank Richard Mitchell who



despite the closure of Pickles is again supplying, without charge, the electricity for all the lights in the main streets. We also thank Alan Jenkins and Peter Lowe for the electric supply to the tree in Galpin Street and that at Palm Cross, respectively, not forgetting Chris Williamson for the firework.

Thank you, Father Christmas, for again coming to your grotto to greet the children of Modbury. And a thank you to David Scott, the town crier, for being Master of Ceremonies, the Revd Matt Rowland for providing a blessing, and the Christmas Royalty, Amelia Spencer and Daniel White, for attending and switching on the lights. We are grateful to Crewmates, Carousel and the Gospel Singers for voluntarily providing musical entertainment.

Ira Young

HELEN MOORE

POWERED BY
exp™ UK

Independent local estate agent
specialising in the sale of
residential and new homes in
the South Hams and Plymouth

01752 962162

helen.moore@exp.uk.com





What did the Greeks and Romans do for Art?

A talk by Gillian Hovell

January 25th - 2 for 2.30pm

Venue: Methodist Church, 100, Fore St, Kingsbridge, TQ7 1AW

Visitors welcome - for a £10 donation or become a member for £50 per year which includes 10 lectures, a magazine, self-funding outings and a Christmas special.

Zoom link call 01548 532850 for a connection (£8 donation)

Note: no lecture in December as we incorporate that into our Christmas lunch event at the Thurlestone Hotel.

MODBURY MAY FAIR 2023

The May Fair is impacted by the Coronation and the major road works by South West Water. So, the Fair will take place between Thursday 27th April and Monday 8th May 2023. Several events will not take place on their traditional day, e.g. the Market and the Mile, more information later. Before we learnt of the new Bank Holiday on 8th May, we considered organising a town "street" party/picnic/music event open to all at the QE11 Recreation Ground on Coronation Day, Saturday 6th May 2023 after the event.

As to the theme it is "Countries of the Commonwealth", in recognition that King Charles III, is Head of the Commonwealth.

If you can help with the planning, or publicity, please contact me at ira.young@btinternet.com. This ten-day event will only continue if new volunteers come forward to help.
Ira Young

PIG RACING RAISES FUNDS FOR ST LUKE'S HOSPICE



Modbury Friends of St Luke's would like to say thank you so much to all those people who helped us raise £1640 for St Luke's Hospice on the Pig Racing Night. We want to thank all those who sponsored a race and so were able to name the Pigs for that race (some very imaginatively named Pigs). We want to thank all those who gave prizes for the raffle. We want to thank all those who came to watch and bet on their Pigs and had a most crazy evening. We are sorry that the event was so popular that we sold out of tickets before the posters went up! **Noted:** we shall try and have more tickets available next time. But instead of waiting three years for inviting the Pigs back, we shall probably only wait two years now! As with many charities fundraising at present, St Luke's is extremely grateful at for all the funds that are raised for it.

Nicky Shepley

THANKSGIVING CANDLES

Light a candle in memory of your loved ones this Christmas at St George's



Names and donations to:

Gill West (07849253605)

or Emma Romney (07879379191)

before Friday 16th December please

All proceeds in aid of St George's Church

The Modbury Messenger would like to wish all its readers a **Happy Christmas**

MODBURY-BASED MORTGAGE & PROTECTION BROKERS

A family-run business with over 20 years industry experience.

- Mortgages
- Remortgages
- Buy to Let
- Commercial
- Help to Buy
- Bridging Finance
- Life Assurance
- Home Insurance



Straker Financial Services



Book a free, no obligation appointment

Tel: 01548 831 670

www.strakerfinancialservices.co.uk

Authorised and regulated by the Financial Conduct Authority (939746) Your property may be repossessed if you do not keep up repayments on a mortgage or any debt secured on it.

MODBURY COMMUNITY APPLE DAY

MODBURY COMMUNITY APPLE DAY OCTOBER 22nd 2022

The Memorial Hall was the place to be! Barrows, baskets, buckets and bottles all bulging with apples and juice! Thanks so much to all the children and adults who came along to harvest, wash, crush, press and bottle. From trees to apples to juice to fund raising - what a productive and fun morning in the Memorial Hall car park!

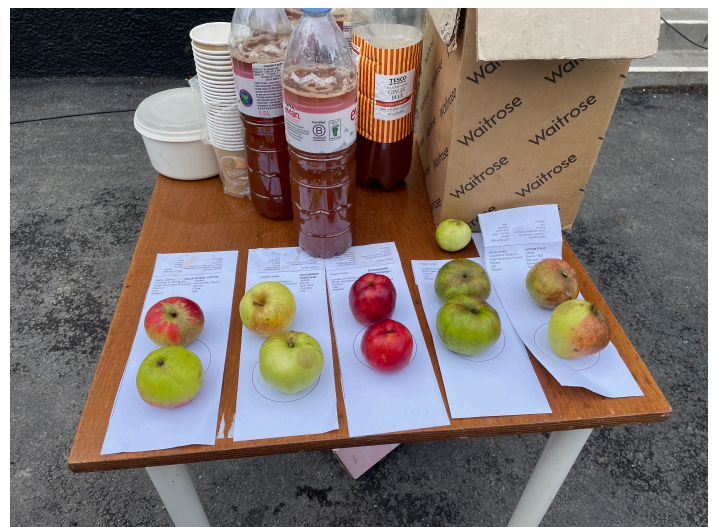
The Parish is a member of Orchard Link and so we are able to hire an apple crusher and apple press to turn apples harvested in the Modbury Millennium Meadow to community apple juice. Lots of reused, clean plastic milk and water bottles had been donated; and these were filled with apple juice from the press. Everyone who visited the event was encouraged to take away a bottle with a donation to St Luke's and future apple events and next year's hire of the press.

Thirty litres of juice were pasteurised in screw top bottles (also donated, thank you). This juice should last for 12 months in your cupboard or larder. Enjoy!

We raised a lot of money, £50 for St Luke's Hospice and £50 for the Community Orchard Group!

We have frozen a dozen bottles of community apple juice so that we can celebrate our 5th **Wassail this winter, on Saturday 14th January in the Millennium Meadow at 5.30pm**. We hope to have our Wassail Royalty Sophie Perry and Oscar Parnell, we have the apple trees, all we need now is you to come along and enjoy!

Charlotte Rathbone, Modbury Community Orchard Group



ALAN MAHER 
ELECTRICAL CONTRACTORS LTD

- *Electrical Installations*
- *Electric Car Charging installations*
- *Intelligent Lighting*
- *Home Entertainment.*
- *Design, Installation and Testing.*
- *Condition Reports and PAT testing*

Phone 01548 811290 / MOB 07966 168 928

e-mail:-alanmaherelectricaltd@gmail.com

health:hub

End Back Pain & Stiffness

WITHOUT Taking Painkillers
Or Seeing The GP

Back pain is the **most common problem** we see
in the clinic..... and it's gardening time!

We have many ways to help those with back pain.
No matter how long you've suffered, there is STILL
something that can be done.

Find out we can help you with our **FREE TASTER SESSION**
or request our **FREE** back pain report,
"12 Steps To Eliminate Back Pain And Stay Pain Free"
Call us and quote "parish magazine Spring 2022"

www.healthhub-kingsbridge.co.uk 01548852355

Physio Massage Pilates Fitness Exercise



Including:

Stone Walling • Retaining Walls • Groundworks
Drainage & Irrigation • Driveways
Patios & Paths • Gates • Fencing & Decking etc

Family Business Since 1976
Company No.3942610

Competitive Quotes Given, Full Insurance

Gatcombe Mill - Littlehempston - Totnes - TQ9 6LW

Office: Tel- 01803 864 871

Email: enquiries@afbrown-sons.co.uk

Web: www.afbrown-sons.co.uk



Luscombe Maye
Since 1873

We offer a **bespoke** and **personal** marketing strategy for your home.

For a free and confidential no obligation market appraisal,
please call or email us now.



Trudi, Sara & Clara

01548 830831

modbury@luscombemaye.com

Stroll and Chat Group

every Wednesday

Poundwell Carpark,
Modbury

11 – 11.30am

then at Cool Beans Café

*Walk at your own risk
All welcome*

Contact Jenny Beavon
07985 759881

Volunteer with us

Be part of our companion volunteer support team



We're looking for volunteers, aged 18 or over, who can give three hours each week to chat to people who have been recently bereaved on the telephone.

Phone: **0800 3047 400** or email: southwesthelper@mariecurie.org.uk

Visit mariecurie.org.uk/volunteering and tap on 'search all roles' to find the perfect role for you.



Walks on the 6th and 20th December will be local walks around Modbury - meeting at Poundwell car park at 9.45am for a 10.00am start.

Our walk on the 13th December will be at Lixton - meeting at Poundwell car park at 9.45 am for a car share. Please speak to a walk leader regarding transport arrangements.

There will be no walk on the 27th December. The walk on the 3rd January will be a local one - meeting at Poundwell car park at 9.45am for a 10.00am start.

Walk Leader contact details:-

Sue Rogers 01548 831289
Jean Wright 01548 810029

Catherine Speight 01548 830195
Ann Brooks 01548 550300

Sue Rogers

walk&talk

Are your feet trying to tell you something?



If your feet are crying out for professional care:



Call me today

for advice & treatment for:
Difficult Nails, Heel Pain, Corns and Hard Skin, Diabetic Foot Care, Verrucae, Cracked Heels, Bio-mechanical Testing, Sport Injuries etc

Home visits or treatment in our Aveton Gifford clinic
Mon-Fri and Eve & Weekend appointments on request

Bernard Hill Podiatrist
Bsc (Hons) MChS



2RightFeet
Podiatry/Chiropody
01548 830 761



Or call **07808 953 538** leave a message and I'll get back to you
www.2rightfeetpodiatry.com

Holbeton Film Club



December's film is **The Duke** (certificate 12A, *infrequent strong language, moderate sex, discrimination*). A comedy drama based on a true story. In 1961, a 60-year-old taxi driver steals Goya's portrait of the Duke of Wellington from the National Gallery in London. He sends ransom notes saying that he will return the painting if the government invests more in care for the elderly.

This is showing on **Friday the 9th December** in Holbeton Village Hall. Doors open 7pm. The programme starts at 7:30pm. Tickets on the door still only £4 (cash only). Ice creams on sale for £1.

Our programme for the coming months is:

Operation Mincemeat, 12A, Sat 14th Jan

Where The Crawdads Sing, 15, Fri 10th Feb

Downton Abbey: a new era, PG, Sat 11th Mar

Fisherman's Friends: one and all, 12A, Fri 14th Apr

Mrs Harris Goes To Paris, PG, Sat 13th May

Tel: 01752 830274 for more details

Harry Baumer



INTENDED MONTHLY FLAG HOIST AT PALM CROSS GREEN - DECEMBER

The flag hoists will only use the International Code of Signal Flags, which can be found at:
[international code of signal flags - Bing](#)

| <u>Date</u> | <u>Masthead</u> | Starboard Yard (Plymouth) - West | Port Yard (Modbury) - East | <u>Event</u> |
|-------------|-----------------------|-------------------------------------|-------------------------------|---------------------------------|
| 09 | Charles I Royal Stand | MODBURY | 1642 | First Battle of Modbury |
| 13 | White Ensign | RPLATE | 1932 nd sub | Battle of the River Plate 1939 |
| 14 | Union Flag | BOSNIA | 192 nd sub5Ans | End of the Bosnia War 1995 |
| 18 | Union Flag | IRAQ | 2013 rd subAns | End of the Iraq War 2011 |
| 28 | Union Flag | AFGH1 st subN | 2014Ans | End of the Afghanistan War 2014 |

Royal British Legion - Modbury Branch



ROYAL BRITISH LEGION

The next meeting of the Modbury and District Branch of the Royal British Legion will take place in The Club on Wednesday 7th December 2022 starting at 7.30pm. New members are always most welcome. As this will be the Christmas meeting, there will be suitable Christmas Fayre and Carols.

David Scott

Modbury Messenger January 2023

Copy Date 5th December

The copy date for the January 2023 Modbury Messenger is 5th December. Please email all articles, notices of events and paid advertisements to modburymessengercic@gmail.com.

The Modbury Messenger is published by Modbury Messenger CIC and is printed by Kingfisher Print. The views expressed in the Messenger do not necessarily represent those of Modbury Messenger CIC.

The Editorial Committee reserve the right to précis/abbreviate any copy submitted for inclusion in the Modbury Messenger. Their decision is final. The contents of the Modbury Messenger may not be reproduced in any form without the prior written permission of Modbury Messenger CIC.

modburymessengercic@gmail.com

CRAFT GROUP

Memorial Hall, Modbury



Every Thursday 2 to 3.30pm
 All abilities welcome

£2

Please contact Wendy on 01548 831219
 for more information.

MODBURY MESSENGER CIC

Modbury Messenger CIC is a Community Interest Company and as such is registered by the Registrar of Companies for England & Wales, Northern Ireland or Scotland. A Community Interest Company is a special type of not-for-profit limited company which exists to benefit the community. The purpose of Modbury Messenger CIC is to disseminate information about events, notices and articles of interest to the people of Modbury and it does this by publishing the Modbury Messenger, a printed newsletter, every month with 1000 copies delivered to homes and businesses within the Parish of Modbury. An online copy of the Modbury Messenger is available to neighbouring communities, advertised via social media and on our website modburymessengercic.co.uk

Advertisers are charged a fee for advertising in the Modbury Messenger and this covers the cost of producing the Modbury Messenger. The Board of Directors, Company Secretary, Editor, Proofreaders and Distributors are all volunteers.

Directors of Modbury Messenger: Christopher Barnes, Diana Lynne Barnes, Burda Gage, Bernard Taylor.
Company Secretary: George Rosevear FCIS.

Editorial Committee: John Bower, Lynne Barnes, Nicky Shepley, Ira Young.

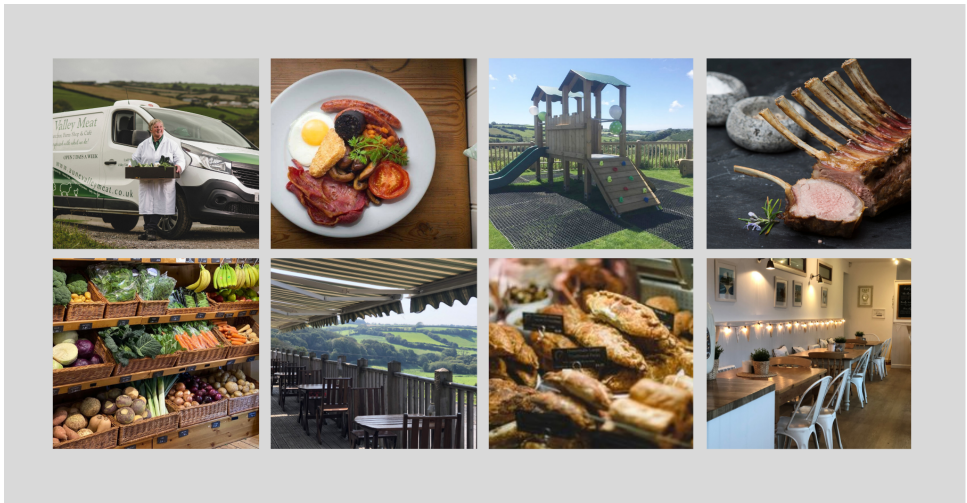
Modbury Messenger CIC has produced the Modbury Messenger as an independent CIC since September 2018. Previously, it was published by Modbury Parish Council.

 **Modbury**
Massage Therapy
Relax, Revive, Rejuvenate

Deep Tissue Massage
 Sports Massage
 Holistic Massage
 Aromatherapy Massage
 Pregnancy Massage
 Waxing

Contact Martha 07990773153
 info@modburymassagetherapy.co.uk
 www.modburymassagetherapy.co.uk

@ Brownston Street, Modbury &
 Wholesome Life Chiropractic, Ashburton



Aune Valley Meat & Valley View Café
 Free Local Delivery
 www.aunevalleymeat.co.uk




Put your feet in safe hands

Full range of podiatry treatments including:

- Nail cutting
- Corns and callus
- Diabetic foot checks
- Ingrowing toenails incl. nail surgery
- Fungal nail treatment
- Verrucae

Jackie Thomas BSc (Hons) MCPod.
 10 Glanvilles Mill
 Ivybridge
 PL21 9PS

 **Ivybridge Podiatry**

01752 426075
 feet@ivybridgepodiatry.com
 www.ivybridgepodiatry.com
 HCPC registered: CH33566

ARCHITECTURAL DESIGN & SERVICES
 contact Jon & Emily Sullivan to discuss your requirements further

- Planning Applications
- Building Regulations
- On Site Supervision

 **arb**
 Architects Registration Board

NEST DESIGN
 25 Galpin Street, Modbury, Devon, PL21 0QA
 www.nestdesignstudio.co.uk 01548 830409




For customers who expect more from their estate agent.

Our team has over 80 years of South Devon estate agency experience.

01548 831163
 modbury@marchandpetit.co.uk

SOUTH HAMS' LEADING ESTATE AGENT

Marchand Petit
 ESTATE AGENTS

Sales
 Lettings
 Auctions



 **Coast & Country Cottages** 

Join the South Devon holiday letting experts

With over 20 years' experience in holiday letting, our locally-based team are proud to offer expert knowledge, bespoke property management options and consistent year-round bookings.

Contact us today to find out about the award-winning support we could offer you.

Find out more | 01548 802179
Order a free Owners Guide | coastandcountry.co.uk

**Est. independent
LOCAL ELECTRICIAN**

**Dependent, honest
and reliable service**



- Complete rewires and new builds
- New 18th edition Consumer Units/Garage Units
- Landlords & Insurance Certificates
- Domestic electrical fault finding
- Specialising in garden, kitchen and floor lighting from planning to certification

All work guaranteed/certificated
Fully insured, qualified &
registered with NICEIC



Call Phil for a free, no obligation quote or callout

Tel: 07769 840012

Email: lightworks.electrics@gmail.com



ERMINGTON HOUSE
Quality Residential Care



Ermington House

CQC overall rating

Good ●

6 January 2021

Quality Care 24 hours a day in an idyllic location

- 24-hour Person-Centered Care
- Highly trained, caring and attentive staff
- Daily stimulating entertainment and activities
- Home cooked, nutritional and appetizing meals
- Safe and secure environment
- Daily visits by District Nurses
- Regular visits by Chiropodist, Hairdresser, Dentists, Opticians and GP's
- Beautiful personalized en-suite bedrooms
- Respite and Long-term Care

Ermington House, Ermington Nr Ivybridge, Devon PL21 0LQ
Email: enquiriesermingtonhouse@outlook.com | Tel: 01548 830076