



illustration - Kate West

MAY FAIR 2026



## Modbury May Fair 2026

MAY FAIR 2026



# Pirates

Full programme inside as a centre four-page pull out

## FALCON ENVIRONMENTAL SERVICES

Local trusted experts in:

- Pest control
- Wildlife management
- Specialist cleaning
- Bird control

We combine our environmentally-friendly approach with proven modern and traditional methods.

Call Us: 01752 929292 | [www.falcones.co.uk](http://www.falcones.co.uk)

Google ★★★★★



[www.let-it-out.co.uk](http://www.let-it-out.co.uk)

The flexible approach to letting your holiday home

Gail Critchlow  
07889 628514

Liz Baker-James  
07388 673228



We are based in Modbury - PL21 0PS

Contact us on: 07920 461079

Email: [info@nealescavern.com](mailto:info@nealescavern.com)

Bookings can be made from our Webpage - <https://www.nealescavern.com>

WE ARE OPEN MON - SAT  
10:00AM - 17:00PM

## WE DO REPAIRS! BRING YOUR DEVICE

The Premier Gadget Repair Centre  
You Break it.... We FIX it!!!

Neale's Cavern can help you with your faulty phone, device, tablet, or gadget. One of our skilled technicians will quickly repair your phone and have it back to you as soon as possible.

We repair all makes and models of Mobile phone, iPad, Laptop, MacBook and GHD repairs.

We also sell Stationery, batteries, Dog treats, Hardware, Electrical, Fire wood and Coal, Paint brushes, Cleaning and Phone/iPad leads & Chargers.

## MICHAEL R HAGGER

### Professional Painter & Decorator

City & Guilds Advanced Craft trained

Over 40 years decorating  
experience, with the last 26 years  
in the wonderful South Hams.

Fully Insured



For a friendly,  
no obligation  
estimate or  
reference

Tel: 07977445521



## MARTIN LEY PLUMBING & HEATING

- Oil Installations,  
Servicing & Repairs
- Unvented Cylinders
- Bathrooms & Showers
- General Plumbing

Tel: Modbury 01548 830609  
Mobile: 07811 934551

## Tall Orders Landscaping

All aspects of gardening

- \*Hedge trimming / Tree work
- \*Grass cutting - Lawns to Paddocks
- \*Fencing / Turfing / Stump grinding
- \*Weed control / Lawn Scarifying

### Logs Supplied

- \*Locally sourced hardwood
  - \*Delivered in dumpy bags / nets
- Tel . 01548 831139 / 07967258318



ARE YOU PAYING TOO MUCH TAX ?  
ARE YOUR ACCOUNTS AND TAX AFFAIRS UP TO DATE ?  
ARE YOUR ACCOUNTING SERVICES COMPETITIVE ?

FOR A SERVICE SECOND TO NONE CONTACT

### MARTIN E RANWELL, FCA ELLIOTT & PARTNERS

ACCOUNTANTS AND TAX CONSULTANTS

KINGSWAY, 10 THE PRIORY,  
MODBURY PL21 0TL  
AND AT 6 MODBURY COURT, 32 CHURCH STREET  
T. 01548 830432 M. 07763 526814

[martinranwell@googlemail.com](mailto:martinranwell@googlemail.com)

EXTENSIVE EXPERIENCE IN BOTH COMMERCE  
AND THE PROFESSION  
ALSO PROPERTY MANAGEMENT SERVICES



## Coastal Computers

- PC & Laptop Repair / Upgrades
- Internet & Email Support
- Device Security & Protection
- Smart Home Devices
- Data Migration & Recovery
- General Guidance

[www.coastal-computers.co.uk](http://www.coastal-computers.co.uk)  
[info@coastal-computers.co.uk](mailto:info@coastal-computers.co.uk)  
07459 766420

## Modbury taxi



Contact  
Tel : 07455393693

### Modbury Private Hire Taxi

Pre booking is required for all local and longer  
distance journeys. This includes daytime,  
evening and airport transfers. Prices are  
agreed on booking.

Please don't hesitate to contact us if you have  
any questions.

07455393693



## Designed Space Ltd

### Architectural Drawings and Planning Applications

Contact Alayne Harris B.I.D.  
0755 191 0874

[info@designedspace.co.uk](mailto:info@designedspace.co.uk)

Based in Modbury



GEORGE H.W. ROSEVEAR  
& COMPANY  
A DIVISION OF HOLBROOK ASSOCIATES

ACCOUNTANCY, TAXATION AND  
COMPANY SECRETARIAL SERVICES

01548 831427

3 MODBURY COURT, 32 CHURCH ST.,  
MODBURY, DEVON, PL21 0QR  
[george@holbrookass.com](mailto:george@holbrookass.com)

## A.R.Hilder

B.Sc est 1985

### Garden design, care & Maintenance specialist

I can care for your borders,  
shrubs, trees, hedges,  
vegetable patch & fruit trees

FORMER VOLUNTEER NATURE RESERVE  
WARDEN AND FORMER HEAD GARDENER TO  
A CORNISH ESTATE WITH OVER 40 YEARS OF  
EXPERIENCE. I CAN HELP TO ENCOURAGE  
MORE WILDLIFE INTO YOUR GARDEN

Call 07762 269436 for free  
initial consultation

# PIRATES! A MUSIC HALL

30th April,  
1st & 2nd May  
7.30pm

Modbury Memorial  
Hall



Table seating,  
arrive early  
Cash bar opens  
at 6.45pm

Programme and  
snacks included  
Fabulous raffle



Tickets £15 at Marchand Petit  
from 6th April

  
MARCHAND PETIT  
COASTAL, TOWN & COUNTRY



*Tailor-made* **travel arrangements to Africa and Latin America.**

35 Church Street, Modbury • 01548 859 272  
sales@distinctiveamericas.com  
www.distinctiveamericas.com



**DISTINCTIVE AFRICA**



**DISTINCTIVE AMERICAS**



## Modbury Therapy Centre *Health and Wellbeing Centre*

**Offering Complementary Therapies**

Acupuncture, Reflexology, Massage Therapy, Homeopathy, Counselling, Psychotherapy, Nutritional Therapy, Yoga, Pilates, Meditation, Cognitive Behavioural Therapy, EFT, Life Coaching, Sound Healing

[www.modburytherapycentre.co.uk](http://www.modburytherapycentre.co.uk)  
[enquiries@modburytherapycentre.co.uk](mailto:enquiries@modburytherapycentre.co.uk)  
**07973 367517**



To advertise your business in the Modbury Messenger, please contact us at  
[modburymessengercic@gmail.com](mailto:modburymessengercic@gmail.com)  
[www.modburymessengercic.co.uk](http://www.modburymessengercic.co.uk)



# THE MODBURY MAY FAIR

**🏴‍☠️ AHOY, ME HEARTIES! SET SAIL FOR A DAY OF FUN AND FOLLY! 🏴‍☠️**

**ON MONDAY 4TH MAY, FROM 10AM 'TIL 2PM, DROP ANCHOR AND JOIN US AT LOWER POUNDWELL FOR A SWASHBUCKLIN' CELEBRATION FIT FOR PIRATES, PRINCES, AND LANDLUBBERS ALIKE!**

**⚓ WHAT TREASURES AWAIT YE? ⚓**

- 👑 THE ROYALTY CROWNING – WATCH AS NEW RULERS BE CROWNED BEFORE THE CREW!**
- 🦆 THE GREAT DUCK RACE – CHEER YER LUCKY DUCK TO VICTORY ON THE HIGH SEAS!**
- 🥞 CREPES – SWEET DELIGHTS TO KEEP YER ENERGY SHIPSHAPE.**
- 🍕 WORLD PIZZA – HOT, HEARTY SLICES WORTHY OF A CAPTAIN.**
- 🌯 COAST 2 COAST – HOG ROAST, HOT DOGS & VEGAN BURGERS FOR EVERY SAILOR ABOARD.**
- ☕ SOUTH COAST COFFEE – A MUG O' FINEST BREW TO WARM YER BONES.**
- 🍦 PETE'S ICE CREAM VAN – FROZEN TREASURE FOR SCALLYWAGS YOUNG AND OLD.**
- 🧜‍♀️ LIZZIE FLUID FACES – TRANSFORM INTO A FEARSOME PIRATE OR MYSTICAL MERMAID!**
- 🌟 HOLLY FRANCIS HAIR – GLITTER BRAIDS TO MAKE YE SPARKLE LIKE BURIED GOLD.**
- 🥕 CRUNCHY CARROT – LEAP, BOUNCE, AND DANCE LIKE TRUE SCALLYWAGS AS THE TUNES PLAY AND THE DECK COMES ALIVE!**
- 🎪 MAY POLE DANCING – TRADITIONAL FUN WITH MERRY PIRATES**
- 🎯 FAIR GAMES – TEST YER SKILL AND WIN BRAGGIN' RIGHTS ACROSS THE SEVEN SEAS.**

**🏴‍☠️ BRING THE WHOLE CREW, DON YER FINEST PIRATE GARB, AND PREPARE FOR A DAY OF LAUGHTER, LOOT, AND LEGENDARY FUN.**

**ALL HANDS ON DECK – WE'LL SEE YE THERE! 🏴‍☠️**



## Modbury Fruit & Produce Show to showcase opportunities at the May Fair Market!

The Modbury Fruit & Produce Show Committee will be appearing at the Modbury May Fair Market on Saturday 9<sup>th</sup> May 2026. Be sure to join us and say hello!

There will be fantastic opportunities to see what the show is all about and to encourage those from Modbury and the surrounding area to get involved!

There will be examples of how to prepare and present fruit and vegetables, from Angela Peters, Handicraft from Pauline Ryder, Floral Art from Margaret Middleton, Children's & Young Adult's entries courtesy of Maisy Allen, Cookery from Angela Hickman, Art examples from Aurora Gamblin and Photography examples displayed by Teri Jeynes-Williams for market goers to enjoy and ask any questions you may have!



Look out for the Modbury Fruit & Produce Show flag in the market area and be sure to pick yourself up a programme to see what you can enter in this year's show, which will take place on Saturday 25<sup>th</sup> July 2026.

It's easy to enter and is a bit of fun, so why not try something new.

We are always on the lookout for volunteers of all ages, to help us on our fundraising events, and on show day with stewarding, refreshments, raffles and supporting our great show which is now going into it's 120<sup>th</sup> year!

If you would be interested, or perhaps would consider supporting the show, do let the committee know or contact Pauline Ryder, Show Secretary, on 07920 760146. It's a great way to meet new people, or to just do something a little different! We look forward to seeing you there.

**Teri Jeynes-Williams, Modbury Show Committee**



 **Luscombe Maye**  
Since 1873

## The Luscombe Maye Advantage

To find out how much your home is worth, please call or email Eleanor, Sara, Janice or Ryan in the Modbury office.

For more information contact  
[modbury@luscombemaye.com](mailto:modbury@luscombemaye.com) or  
call 01548 830831

[luscombemaye.com](http://luscombemaye.com)  [luscombe maye](https://www.facebook.com/luscombe_maye)  [luscombe\\_maye](https://www.instagram.com/luscombe_maye)

# Willow Workshop in Modbury



On Saturday 28th February, a willow workshop was held at the Scout Hut in the QEII Recreation Field. The object of the workshop was to make a plant support. Seven Modburians attended the event which lasted four hours.

We started the workshop by choosing the willow stakes (about 7-8 foot in height) that were going to form the obelisk. These stakes had to be trimmed and then lodged into a former a wooden base) to ensure that a round structure was obtained. The attendees were then shown how to weave around this structure in order to create the plant support. Using five foot willow weavers, we paired around the stakes until we reached the top of our obelisk.

By the end of our session, all attendees left with a beautiful plant support and were given perennial sweet pea seeds for their obelisk. The seeds were kindly donated by LoE.

In view of the fact that the workshop was oversubscribed, it has been decided that another workshop will be held on 11th July.

The cost of the workshop will be £25, which needs to be paid when you book the course.

Please note that these workshops are fund raisers for our environmental group ModWAG.

More details of who to contact for the next workshop will be posted on the next edition of our Modbury Messenger.

**Marina Auburn**





**MODBURY CARING**

SUPPORTING OUR COMMUNITY

**Could you help support the wonderful work done by the volunteer drivers and befrienders of Modbury Caring?**

**Join our 100 Club with a £20 per year subscription**

**It's a monthly draw with cash prizes of £30 and £20 each month**

Apply via our website: [www.modburycaring.org.uk](http://www.modburycaring.org.uk)  
or pick up a form from the Modbury Parish Office and leave the completed form for the attention of Michael Young at the Parish Office

Modbury Caring: Charity number 1070237, provides services to patients and residents in Modbury and the outlying villages.



# Modbury Parish Council Meeting

Tuesday 3rd March 2026, 7:00pm MARS Pavilion

## Bloor Homes



Following the SHDC decision to grant outline planning permission on the Bloor Homes proposal, in contravention of MPC's approved Neighbourhood Plan, we have:

- 1) Met with Tozers who are prepared to advise and act on our behalf if necessary. We have more time than we originally thought to seek judicial review of the decision.
- 2) Written twice to the Chair of Planning at SHDC, Cllr Mark Long, to object to the process and decision and have had replies to both, rejecting our assertions. He confirms that consent is subject to the satisfactory agreement on S106 contributions. These are the subject of ongoing negotiations during which time the Parish Council may make further representations which the planning authority are obliged to consider.
- 3) We will now consider asking Tozers for formal legal advice about how best to respond and will then decide whether or not to go for judicial review.
- 4) We are also considering a parallel approach to the Local Government Ombudsman to complain of maladministration by SHDC.
- 5) We propose to hold a public meeting before the end of this month, subject to the view and approval of councillors.
- 6) Since one of the main objections to the development relates to Highways and road safety, we may wish to seek professional advice and a desk-top study of the road safety aspects of the proposal.
- 7) There is a petition circulating in the community objecting to the Bloor Homes proposals.
- 8) There will have to be another application from Bloor Homes for detailed consent before any development can take place.

**Date of next meeting: Tuesday 7<sup>th</sup> April 2026 @ 7pm**

**Tony Price**

## walk&talk

Walks will be on 7th, 14th, 21st and 28th April.

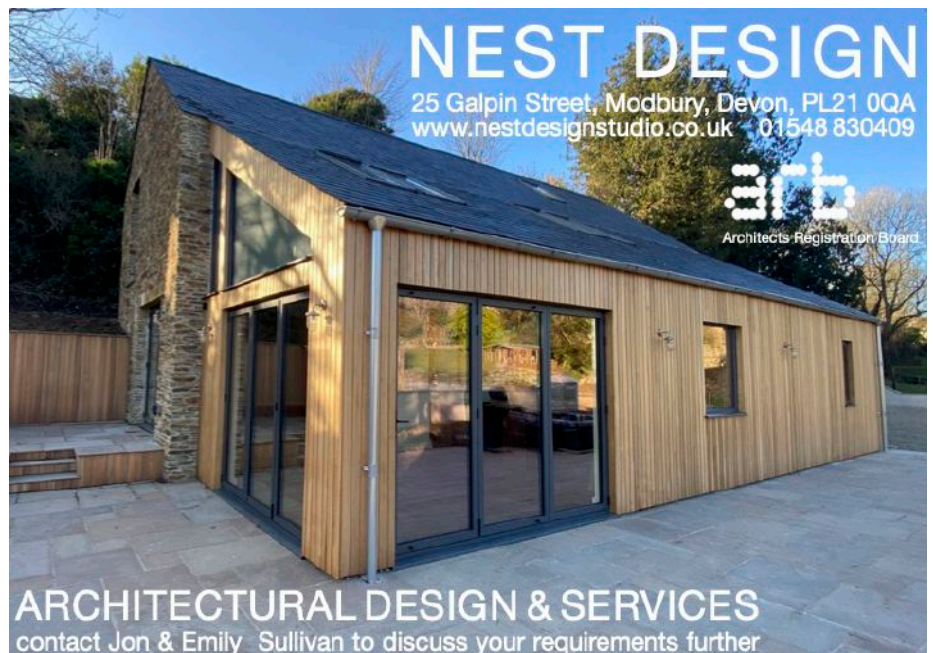
The venue and travel arrangements for each of the walks will be discussed at the previous week's walk and decided according to the weather forecast for the walk day.

Walk leader contact details:-

Sue Rogers 01548 831289

Jean Wright 01548 810029

**Sue Rogers**



**To advertise your business in the Modbury Messenger, please contact us at**

**[modburymessengercic@gmail.com](mailto:modburymessengercic@gmail.com)**

**[www.modburymessengercic.co.uk](http://www.modburymessengercic.co.uk)**

**See p. 30 for details of advert sizes and prices**

**The Modbury Messenger is a not-for-profit community interest company run by volunteers for the benefit of those living and working within the parish of Modbury.**

## Modbury Wildlife Action Group Spring Update

It's been a long, horrible winter, but at last birds are singing and plants are coming to life again. We have hedgehogs in our garden, already finishing a bowl of food every night, so they are out and about, getting ready for the breeding season. We give them dry hedgehog pellets or cat food and clean water every night. Of course, as it gets warmer, they will find more insects, slugs and snails to eat and they are really good for natural pest control, as well as being very cute.



ModWAG members have also emerged from hibernation (I wish!) and are busy planning the year ahead so here is some of our news:

- Marina Auburn ran a successful **willow weaving workshop** for us in February, and you will read her full account on p7 in this copy of the Messenger. Participants made garden obelisks on which to grow perennial sweet peas from donated seeds.
- Our two **Duke of Edinburgh young volunteers**, Angus and Jasmine, have worked willingly on many of our projects whether that be weeding, planting, pruning or packing seeds. They have learned a lot about bats, birds and moths using our monitoring equipment, and have been a great support to us, so big thanks to them both. We are always delighted to welcome new members of any age, and if you would like to volunteer, give us your ideas, or support in any way, do get in touch ([carolinebower@btinternet.com](mailto:carolinebower@btinternet.com)). Any teenagers interested in using the opportunity for their D of E service might like to chat to Angus or Jasmine about their year with ModWAG.



- Last year, we re-planted much of the native hedge beside the toddlers' playpark at Palm Cross. This was because many of the original hedge plants had died. It usually takes about 3 years to establish a good, thick hedge, as opposed to a tall, spindly one, and during that time we need to prune it in the late winter/early spring to encourage it to thicken and branch out near the base. Hence you will see this hedge has had a significant 'haircut' and it will be all the better for it in the long run.
- We have decided to defer our next Naturefest until 2027 and instead will run a series of smaller **events through the summer about bats, birds and moths**, which should have wide appeal. Watch this space for more details

- Our (SHORT!) **AGM is open to the public on Tuesday April 21<sup>st</sup> in the QEII Pavilion** at 7.20pm This will be followed at 7.45 pm by a **film 'Return of the Beavers'** which gives a fascinating insight into the life of beavers and benefits they bring to waterway environments. Thanks to Ermington Environmental Group for loaning us the film. All welcome, and we would love to see you there for the evening. Tea, coffee and biscuits will be served, the film viewing is free, and it lasts about 50 minutes.

Fitness studio & 24/7 Gym

**BOMBERS**  
PHYSICAL TRAINING

Unit A  
Pearse Gardens  
Modbury  
PL21 0FX

Over 100 5 star reviews

Contact us to book your 'No Sweat Intro'

[www.bomberspt.co.uk](http://www.bomberspt.co.uk) [gym@bomberspt.co.uk](mailto:gym@bomberspt.co.uk)

Caroline Bower

# NOAH'S ARK

Baby and Toddler group

Varied fun activities

Refreshments

Toys

Songs

Bible story

Chat



Every Wednesday in term time

9.30 – 11.00am

QE2 Recreation Ground (PL21 0FS)

£2 per family

Contact: [s.chapman@modburyteam.org](mailto:s.chapman@modburyteam.org)

# Modbury Tiddlers Playgroup

## Come and say hello!

For families with children 0-4 years

**Fridays – 9.15-11.15 at Modbury Memorial Hall**

Last Friday of the month – out and about day

Term time only

Sensory play, crafts and a dedicated baby area  
Dress up, ride ons, toys and more!  
Refreshments provided for adults and a healthy snack provided for children



Find us on facebook and instagram for up to date info each week

f Modbury Tiddlers @modbury\_tiddlers  
mail@modburytiddlers.org.uk



Tree surgery & landscape management

Contact us on 07793 056898

Tree surgery

Shrub pruning

Grass cutting

Hedge reductions

Fence construction

Garden projects

Planting

Regular maintenance

Working with commercial & domestic clients

in the South Hams since 2012

Fully insured to £5 million

NPTC & RHS qualified

[info@coastalgardenservices.co.uk](mailto:info@coastalgardenservices.co.uk)

[www.coastalgardenservices.co.uk](http://www.coastalgardenservices.co.uk)

SC

Stanborough  
Chorus

## SPRING CONCERT 2026

**Haydn** – Maria Theresa Mass

**Bernstein** – Chichester Psalms

**Dvorak** – String Quartet “The American”

**Saturday 18th April At 7.30pm**

St George's Church, Modbury

Conductor – **Trefor Farrow**

Orchestra Leader – **Karin Leishman**

With Soloists **Helen Haviland, Rebecca Squire, Mark Hounsell and John Hobbs**

And Featuring

Counter-Tenor **Oliver Doney**

Harpist **Elizabeth Jane Baldry**

Organ **Andrew Millington**

Percussion **Michelle Hiley**

**TICKETS:** £18 / UNDER-18s free

Available online, at KIC,

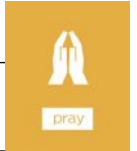
Modbury Post office and from

all choir members!



SCAN THE  
QR CODE  
TO BUY  
TICKETS

CHARITY NO: 1084313



**KIDS' CHURCH** - Kids' Church meets in Modbury Primary School. Parents, please drop off your Explorers (age 9+) and Discoverers (age 6-8) at the school from 9:15 am where they will be met by one of the leaders. After Kids' Church, the youngsters will be taken to St. George's to be with their parents at the end of the service. Climbers (age 0-5) will remain in St. George's, meeting their leader to be taken to the Lower Vestry. If you have any questions regarding Kids' Church, please contact Sara Chapman on [s.chapman@modburyteam.org](mailto:s.chapman@modburyteam.org).

For St George's Parish enquiries, contact Rev. Oli Long, Vicar 01548 732344.

	Service	Service Leader
April 2nd Maundy Thursday	Holy Communion 7.00 pm	Rev. Oli Long
April 3rd Good Friday	Family walk with Kids' Activities 10.30 am - meet at St. George's Church.	TBC
	Reflections around the Cross 2.00 pm	Joyce Howitt
April 5th Easter Sunday	Holy Communion 9.30 am	Rev. Oli Long
April 12th	Holy Communion BCP 8.00 am	Rev. Oli Long
	All-Age Service 9.30 am	Rev. Oli Long
April 19th	Holy Communion 9.30 am	Rev. John Elliott
April 26th	Sunday Worship 9.30 am	Joyce Howitt
	Rooted - a service of contemporary Worship 6.00 pm	Rev. Oli Long

### CHRISTIAN COMMENT: EASTER REFLECTIONS

At Easter, Christians celebrate Jesus Christ's death and resurrection, through which He offers freely to everyone, forgiveness for their wrongs and new life, a second chance, as it were.

At Easter, the *empty* tomb rings with an irony that says *fullness* of life is found there.

From a young age, I have always understood that having '*more*' is equated with success. *More* friends, *more* money, *more* qualifications, *more* possessions, *more* property and so on, is a sign of success. There is a lot of encouragement to '*live life to the full*', needs to be *more* self-aware, *more* educated.

On the other hand, to have *empty* cupboards, an *empty* wallet, or an *empty* fuel tank, is a terrible thing.

We may not like to admit it, but the way that we have been wired in the world that we inhabit makes this a never completed pursuit of gain.

Indeed, religious systems have operated like this too; you must do *more*, attend *more*, give *more*...

All in all, this wearies us and frustrates us. The stark contrast of the *empty* tomb and the piercing irony is that the tomb that was once *full* of death now lies *empty* and open as the gateway to true *fullness* of life.

It is no accident that the people that the risen Christ first met were in a garden. It echoes the narrative of generosity from the first days of creation in the garden of Eden when perfection and abundance reigned, and fellowship between divinity and humanity was unhindered.

Today, the scandalous Giver stands risen and victorious with the *empty* tomb behind Him, announcing that the way of true *plenty* is found with Him.

I would love to see and chat with you at any of our services around the Mission Community this season.

**Oli Long**

**St Monica's Roman Catholic Church,  
Modbury**

No weekly mass at present

**St Austin's Priory Roman Catholic Church,  
Cadleigh**

Mass weekly at 11:30 am  
on Sunday

**Phone: 01752 895888**

**Web: [staustinsivybridge.co.uk](http://staustinsivybridge.co.uk)**



## A Grand Idea for St George's!

St George's has for centuries been a special place for worship and since its stunning refurbishment, it has also become an increasingly popular space for hosting concerts, both grand and intimate. The Stanborough Chorus found a happy home at St George's even before the refurbishment and was proud to contribute to the funding of the work. But, like the church community, we are forward-looking and always willing to consider new horizons, which is why, when the opportunity arose via a kind benefactor to help buy a grand piano for St George's, it seemed too good to miss. What an addition to the musical resources of the church and visiting musicians!

The piano in question is a classy Grotrian-Steinweg, in excellent condition, but it needs new hammers and these don't come cheap! So, we're going to raise the money and here are some of our ideas. We've already submitted a bid to a charitable trust and our music impresario, using his extensive list of contacts, has lined up a range of Sunday afternoon concerts from professional artists prepared to offer their services. These include Abbey Brass and the brilliant pianist, Duncan Honeybourne. Meanwhile the Stanborough will rustle up the cream teas, organise the raffle and generally look after you, the audience, and hope that you'll respond generously. I'm sure you will! In fact, you will have an early opportunity to help at our next brilliant concert on Saturday 18<sup>th</sup> April when there will be a retiring collection to help with the funding programme. Please put that date in your diary and we'll see you there. Look out for updates – and, of course, look out for the very grand piano!

SC

Stanborough  
Chorus

PS You may spot a rather grand piano sometime soon in St George's. This is not THE grand piano, but one on loan from our benefactor whilst we are raising the funds and the new hammers are being fitted. Now that's what I call generosity!

Andrew Kinder

## Modbury May Fair Programme available online at [www.modburymessengercic.co.uk](http://www.modburymessengercic.co.uk)

### MODBURY PARISH COUNCIL

Modbury Parish Council Office, 1 Modbury Court, PL21 0QR  
Tel: 07467134225 email [parishclerk@modburyparishcouncil.gov.uk](mailto:parishclerk@modburyparishcouncil.gov.uk)



#### Your Councillors are:

Bill Cole	01548 830913	
Chris Field	07836 592854	<a href="mailto:chrisfield@modburyparishcouncil.gov.uk">chrisfield@modburyparishcouncil.gov.uk</a>
Barbara Price (Chair)	07739752095	<a href="mailto:barbaraprice@modburyparishcouncil.gov.uk">barbaraprice@modburyparishcouncil.gov.uk</a>
Tony Price	07801837129	<a href="mailto:tonyprice@modburyparishcouncil.gov.uk">tonyprice@modburyparishcouncil.gov.uk</a>
Phil Smith (Vice Chair)	07759282404	<a href="mailto:philsmith@modburyparishcouncil.gov.uk">philsmith@modburyparishcouncil.gov.uk</a>
Dave Trigger	07808742372	<a href="mailto:davetrigger@modburyparishcouncil.gov.uk">davetrigger@modburyparishcouncil.gov.uk</a>
Ann Turner	01548830606	<a href="mailto:annturner@modburyparishcouncil.gov.uk">annturner@modburyparishcouncil.gov.uk</a>
Sarah Wyatt	07794 662903	<a href="mailto:sarahwyatt@modburyparishcouncil.gov.uk">sarahwyatt@modburyparishcouncil.gov.uk</a>

**How can we help you?** Councillors run drop-in surgeries on Sat. 10:00 - 11:00 am in the Parish Office at 1 Modbury Court. The Parish Clerk is in the Parish Council office on Tues & Wed, 10:30 am – 5:00pm. Call into the office, phone, email or come along to our meetings at 7:00 pm in the Pavilion, QEII Recreation Ground on the first Tuesday of every month and speak in the public forum.

<b>Devon County Councillor (Salcombe Division):</b>	Louise Wainwright	Tel: 07908 525663 <a href="mailto:louise.wainwright@devon.gov.uk">louise.wainwright@devon.gov.uk</a>
<b>South Hams District Councillor (Charterlands Ward):</b>	Bernard Taylor	Tel: 01548 830844 <a href="mailto:Cllr.Bernard.Taylor@southhams.gov.uk">Cllr.Bernard.Taylor@southhams.gov.uk</a>

# MODBURY MAY FAIR

## CARNIVAL

SATURDAY 9<sup>TH</sup> MAY, 4PM

AHOY, FAMILIES!

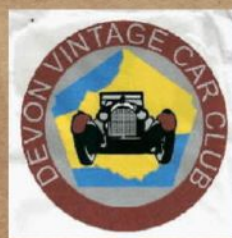
GATHER YOUR CREW, DRESS LIKE PIRATES, AND JOIN  
OUR CARNIVAL ADVENTURE!

MARCH TOGETHER OR SAIL IN STYLE ON A FLOAT—  
EVERY FAMILY CAN BE PART OF THE FUN.

THE MORE COSTUMES, THE MERRIER!

THIS YEAR, WE'RE REALLY HOPING TO SEE MORE  
ADULTS GETTING INVOLVED—FANCY DRESS IS WARMLY  
ENCOURAGED FOR EVERYONE JOINING THE CARNIVAL  
PROCESSION!

SPECIAL GUESTS  
THE NOSS WAILERS  
CROOKED TEMPO SAMBA BAND



SPONSORED AND ENTRY FORMS FROM MARCHAND PETIT

## PAUSE FOR THOUGHT

You are vibrant and blossoming. Wherever you are right now, look around you. Flowers are in bloom, birds are singing, and the bees are buzzing. You are nature, and all the vibrancy that you see all around you is a reflection of your inner landscape. Spring looks good on you.

I offer you our monthly reminder to take a deep breath and our mindfulness moment. So do it with me, lift your shoulders to your ears on the inhale and drop them on the exhale with a big sigh. You have made it through 100% of your hardest days, and April is here to remind us that light is winning. We have passed the spring equinox (March 20th), so now our daylight hours are increasing, and temperatures are on the rise. (Whoopee!). How would you like to bring Spring into your days? Could you make flower arrangements from garden blooms? Or maybe enjoy your first coffee or tea outdoors - nothing fancy, but can we carve out some time to acknowledge the seasonal shift all around us.

I look forward to seeing you skipping up and down the high street.

Big hugs,

**Becky Hickman and the Wellness Warriors Team**

### Open Gardens

#### Modbury Town Improvement Charity

#### Invite you to open your garden up to the public for one day only

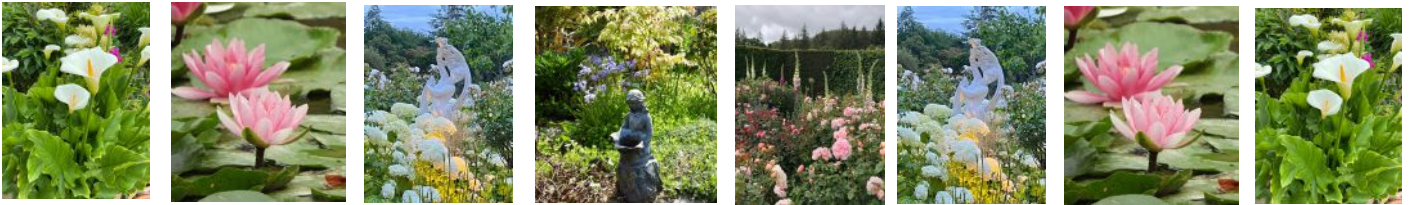
People love to mooch around the gardens of Modbury, seeing the town from a different perspective and admiring your hard work. If you would like to open your garden - it doesn't have to be a Gardener's World masterpiece - it could be full of lovely garden art, have a pond, be a wildflower or wild nature haven, we'd be delighted to hear from you.

**This is a fundraising event on Sunday 7<sup>th</sup> June 2:00 pm-5:00 pm**

**Please send your contact details to**

[sarahannwyatt@yahoo.co.uk](mailto:sarahannwyatt@yahoo.co.uk)

**call for more information 07794662903**



Advertise your club/society/event in the  
Modbury Messenger  
[www.modburymessengercic@gmail.com](mailto:www.modburymessengercic@gmail.com)



**Sarah Wyatt**  
Independent Civil Celebrant

Weddings, Namings, Vow Renewals,  
Funerals – Celebration of Life  
MAKING MEMORIES WITH BEAUTIFUL CEREMONIES

Tel: 07794662903 Email: [circlecelebrantsarah@gmail.com](mailto:circlecelebrantsarah@gmail.com)  
[www.circlecelebrancy.co.uk](http://www.circlecelebrancy.co.uk)

# BELL RINGING COMPETITION



**SATURDAY 9 MAY**

## ST LAWRENCE'S CHURCH, BIGBURY

COME AND LISTEN TO SOME OF THE  
COUNTY'S BEST BELL RINGERS  
BETWEEN 2 – 6 PM

**REFRESHMENTS SERVED**

It's that time again ... for

## Modbury's Marvellous Makeover

18th & 19th April 2026, 10:00 am - 4:00 pm

Please join us as we are so proud of our town and want to spruce it up for the summer

We need help with ...

Weeding, cleaning, planting, window cleaning, sign cleaning, flag flying around our town.

We also need help with painting and tidivating Modbury.

If there are groups who would like to do specific tasks, please contact us in advance, otherwise we will allocate tasks on the day.

Please contact:

Duncan Currall

dc.enterprises@hotmail.co.uk

or

Sian Walker-McAllister

sian.walker-mcallister@outlook.com

On 18/19 April we will meet outside the Modbury Parish Council Offices in Church Street, Modbury where there will be ample supplies of cleaning equipment and hi-vis gilets.



**MODBURY**  
PARISH COUNCIL



## Ivybridge u3a General Meeting

Monday 20th April 2026

2.00pm at the Watermark Centre

**Scones, Secrets and Sleuths :  
a Devon Writer's Life in Mystery**

Author, Suzy Bussell, invites you into her world of cosy mystery writing where crime scenes and ordinary people uncover extraordinary secrets. Suzy will share stories behind her Jane Austen Mysteries and Exeter Mysteries. She will reveal how Devon's landscapes spark her imagination and inspire her creation of detectives that readers love.

The event is open to members and to those no longer in full-time employment who wish to find out more of what u3a has to offer.

**Roy Little**



## FIONA'S FANCY FEET DANCE SCHOOL

**CLASSES IN MODBURY  
AND KINGSBRIDGE**

Scan the QR code



CONTACT FIONA ON

07800883367

FIONASFANCYFEET@GMAIL.COM

WWW.FIONASFANCYFEET.ORG.UK



## BIGBURY CAMPING BARN



Shake off the winter blues with an uplifting and revitalising spa day, available for your exclusive use.

Contact Cathy 01548 810079  
info@bigburyholidays.co.uk  
www.bigburyholidays.co.uk

## MODBURY TENNIS CLUB

April 2026 to March 2027 Memberships

New Memberships and renewals are invited for the year commencing 1<sup>st</sup> April.

Join your local tennis club & have access to the all-weather courts 52 weeks a year right on your doorstep.

Family	£60.00 pa
Single	£40.00 pa
Junior & student (over 12 yrs)	£25.00 pa
Child (under 12 yrs)	£ 5.00 pa

- Coaching available for all age groups;
- Friendly Club Sessions Thursday afternoons & Sunday mornings (free to members);
- or just play whenever you wish to.

Full details & Application Form available at [www.clubspark.lta.org.uk/ModburyTennisClub](http://www.clubspark.lta.org.uk/ModburyTennisClub)

Or, contact: [info@modburytennisclub.uk](mailto:info@modburytennisclub.uk)

Or, Chairman 07968 777141

AND INTRODUCING **THREE FREE TASTER SESSIONS** ... we're calling it **"HIT & HOPERS"**

For those of you that haven't played for a while, or simply want to give tennis a try.

We can provide racquets and balls if you don't have your own.

You **don't have to be a Member**, just come along to any 3 of the following dates:

Thursday evenings 6:00 - 7.00pm : 23<sup>rd</sup> & 30<sup>th</sup> April & 7<sup>th</sup> May

Friday mornings 10:00 - 11.00am : 24<sup>th</sup> April, 1<sup>st</sup> & 8<sup>th</sup> May



## Modbury Branch Royal British Legion

The next Meeting of the Modbury and District Branch of the Royal British Legion will be our Business Meeting on Wednesday 1<sup>st</sup> April at 7.30pm. All are welcome.

*David Scott*



## Modbury History Society

The next meeting of the Modbury History Society will be on 14<sup>th</sup> April when Hazel Jones will talk on "Jane Austen's DevonConnections."

In May, there will be a talk about "Modbury's Civil War" by Philip Photiou on May 21<sup>st</sup>, 2026, at Wembury Village Hall.

The History Society usually meets at the Pavilion in the QEII Recreation Ground where there is ample parking. The current series of eight lectures started in September. Membership of the society is £20 per annum, but guests are welcome to attend individual meetings for a fee of £5.

The Modbury Heritage website is a comprehensive database with information about the town including historic photographs, a walking guide and parish records of use to family historians.

[www.modbury-heritage.co.uk](http://www.modbury-heritage.co.uk)

For further information please contact

*Rosemary Parker*

## Holbeton Film Club



April's film is **Wicked** (certificate PG). **Part 1** of a two-part film adaptation, follows the unlikely friendship between Elphaba, a misunderstood, powerful young woman with green skin, and Glinda, an ambitious, popular girl. Set at Shiz University in Oz, they navigate rivalries and romance before confronting the corrupt Wizard of Oz.

This is screening on **Friday the 10<sup>th</sup> April 2026** in Holbeton Village Hall. **Doors open 3pm. The film starts at 3:30pm.** Tickets on the door are £2 for children under 12 and £4 for adults (*card or cash*). Ice creams are on sale for £1. The film lasts 2 hours 40 minutes so should be finished around 6:10pm.

Our programme continues with:

Ocean with David Attenborough, PG  
Sing Sing, 15  
Ballad of Wallis Island, 12A

Saturday 9<sup>th</sup> May  
Friday 12<sup>th</sup> June  
Saturday 11<sup>th</sup> July

01752 830274, [harryluson@gmail.com](mailto:harryluson@gmail.com) <https://holbetonfilmclub.com/>

*Harry Baumer*





# MODBURY MAY FAIR 2026

## 30th April - 11th May



## MODBURY TAKES TO THE HIGH SEAS!

A Royal Charter to hold an annual nine-day Fair was granted to Modbury in 1329 by King Edward III. The Charter was read by the Portreeve on May 3rd, eve of the old St. George's Day, to announce the start of the Fair and allowed that the people had the right to free trade and to sell liquor without a licence. This freedom was symbolized by the Glove, which, on a pole with flowers, was first hung on the Market Hall, then the Bell Inn on Broad Street. The Town Crier reads the Charter and the Glove is hung there on the same building every year.

Modbury's own Town Crier, David Scott, will officiate and herald events throughout the Fair.

## Thursday 30th April - Saturday 2nd May

### **Pirates! A Music Hall - 7.30pm** **Modbury Memorial Hall**

May Fair casts off early with an exciting and fun-packed variety show in music hall form. There will be sketches, monologues, singalong sea shanties and pirate songs. and excerpts from The Pirates of Penzance. In true music-hall style there will be a chairman and a small orchestra to enhance the entertainment.

Seating will be at tables, small snacks are provided and drinks available throughout. The raffle will have wonderful prizes so bring some cash!

Tickets will be on sale at Marchand Petit in Broad Street.



## Saturday 2nd May



### **Registration for Monday's Events - 10am-1pm** **At the Mewstone shop in the Old Bank, 13 Broad Street**

#### **Modbury Mile Fun Run registration**

Secure your place and collect your number for the run on Monday afternoon - see next page for details. Entry fee £2 pp for all. You can also register at Modbury School and on the day.

#### **Duck Race - Buy your duck for £1**

or in various shops all week or on the day in the Lower Poundwell Car Park.

Prizes for 1st, 2nd and 3rd places

The race is on Monday - see next page for details.

Be aware that access to the stream and duck race, which is in the Meadow, is via a stone stile, and is unsuitable for wheelchairs and pushchairs.

***Any questions about May Fair 2026?***  
***Please email [pipainsworth@btinternet.com](mailto:pipainsworth@btinternet.com)***

## Sunday 3rd May

### **May Fair Treasure Hunt – start from 1pm-2.30pm**

A treasure hunt for adults and another for children in a gentle, enjoyable stroll around town.

Collect your forms after 1pm in the Upper Poundwell courtyard.

Fee £1 for adults and 50p for children. Return forms by 4.00pm to the Church.

### **Afternoon Teas by St George's - from 3.00pm in St George's Church**

Indulge with a traditional Devon tea (squash and gluten-free cake available).



## Monday 4th May



### **Crowning Ceremony with entertainment for all - 10am-2pm Lower Poundwell Car Park**

Old-fashioned **fairground games** through the morning; Crunchy Carrot bouncy castle plus; Lizzie Fluid Faces; Holly Francis Hair for glitter braids. **Live Music and Maypole Dancing!**

**10.00am-12.00pm** **buy your ducks** for the duck race

**10.30am** **Crowning of the May Fair Royalty,**

Queen Maisie Palmer and King Charlie Walker, attended by Princess Martha Smith

Reading of the Charter by the Town Crier and Hanging of the May Fair Glove.

Announcement of May Fair Community Grants.

**10.45am-12.00pm** **Mile Fun Run registration** – Book in & collect your number, entry fee £2

**Food Galore:** World Pizza; South Coast Coffee; Hog Roast, Hot Dogs & Vegan Burgers;  
Pete's Ice Cream; Modbury Twinners Crepes

### **Duck Race - 12.30pm**

Prizes for 1st, 2nd and 3rd places

Buy your duck for £1 from local shops or on the day in the Lower Poundwell Car Park

Be aware that access to the stream and duck race, which is in the Meadow,  
is via a stone stile, and is unsuitable for wheelchairs and pushchairs.

### **The Modbury Mile Fun Run - 2.15pm**

A fun event for all the community starting and finishing at the bottom of Galpin Street.

Adults and teenagers compete in the first race, children in the second  
(minimum age 5y, children under 8y must be accompanied by an adult).

With 14 categories from school *Key Stage 1* to *over 50 years*.

**there is something for everyone.**

Trophies for the winning runners in each age/gender category

**PLUS medals** for *all runners* and gold/silver/bronze for the top 3 in each category

**PLUS prizes** for the best-dressed adult & junior runner in line with this year's theme (pirates).

There will be no official timing ... **because it's fun!**

The Modbury Mile is sponsored by **Luscombe Maye Estate Agents**



### **Quiz at the Exeter Inn – 8.00pm**

£2pp entry, plus £10 for a meal (food served beforehand from 7.00pm).

Maximum team size is 6, no minimum.

Contact the Exeter Inn on 01548 831225 to book a table in advance.

Cash prize for the winner and the usual superb raffle prizes.



## Wednesday 6th May

### **Dog Show – 6.30pm – Memorial Hall Courtesy of South Moor Vets**

**Categories:** Best Puppy (under 18 months); Golden Oldie (over 7 years); Best Rescue; Best Crossbreed; Best Pedigree; Best Fancy Dress; Waggiest Tail; Child's Best Friend.  
Best In Show: all class winners will automatically be entered.

**Entry is £1 per Dog per class**

Best Pet Portrait Art Competition - entries are FREE and winners will be displayed at South Moor Vets after the show

Contact South Moor Vets for more info and to register your Dog for this year's show.

**You must pre-register, otherwise you may not be able to enter on the day!**

South Moor Vets 01548 830210 ; modbury@southmoorvets.co.uk

### **Acoustic Music Night at the White Hart – 8.30pm**

Bring along your guitar or other acoustic instrument or just your voice and join in with the tunes and singing. Or come along to listen.



## Thursday 7th May



### **Cub Scout Beetle Drive – QE2 Pavilion – 6pm-7.45pm**

1st Modbury Cub Scouts invite you to join in a fun-filled evening.

Prompt start at 6.00pm. £2 entry fee.

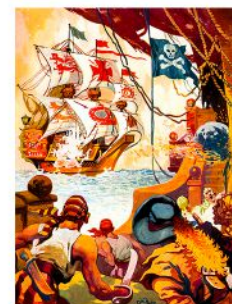
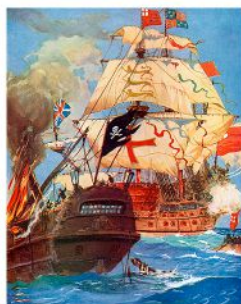
KS1 children need to be accompanied.

### **Modbury Gospel Singers – St George's Church - 7.30pm start**

Modbury Gospel Singers will be entertaining you with their Sound of Gospel Music

**Free entry.** Doors open at 7pm.

Bring your wallets for the cash bar and donations to Modbury May Fair, and your hearts for a fun night of music for all ages.



## Friday 8th May

### **Exeter Inn Senior Residents Lunch: 12 pm**

£12.50 for two courses; book your place by calling 01548 831225

### **Bingo at the Memorial Hall - 7.15pm**

Organised by Modbury Brownies. Doors open 6.45pm. A simple, fun game of chance for all the family. Bring your own bingo dabbers and buy your games at the door.

Prizes to be won. Refreshments available.

# Saturday 9th May

## **May Fair Market in Upper Poundwell Car Park 9.00am – 1.00pm**

**Opened by our Royalty, Modbury's annual street market with a superb array of crafts, goods, produce, games, and ever-popular plant stall.**

**1st Modbury Scouts will be serving bacon rolls!**

*To book a stall email [pipainsworth@btinternet.com](mailto:pipainsworth@btinternet.com)*

*If you can help to put up (6-7pm Friday) and/or take down (1-2pm Sat.) the market stalls please contact Tony Price - 07801 837129 [tp@lordprice.com](mailto:tp@lordprice.com)*

## **Art @ The Hart 9.00am – 1.00pm**

Beautiful artwork on display and for sale upstairs at the White Hart. Watercolours, oil paintings, paper art, prints, photography, gifts and much more. All created by local artists.



## **Shop Window Competition Judging – 10.00am**



## **Carnival Procession - 4.00pm - 5.00pm**

Judging from 3.15pm, this will start from the Memorial Hall and thence down Church Street, with the wonderful Crooked Tempo Samba Band and the Noss Wailers, returning via Brownston Street and Dark Lane.

Entry forms from Marchand Petit to be returned, to them, no later than the 30th April.

**Display of Vintage cars & tractors 2.00pm to 3.30pm by Long Park.**

**The vehicles will then join the parade at 4pm.**

*If you are not a member of the car club, but wish to include your car, please email [mike.oakins@gmail.com](mailto:mike.oakins@gmail.com)*



**A swashbuckling' celebration for pirates, crew and landlubbers all**

**Fancy dress - the more costumes the merrier**

*The Carnival sponsors are Marchand Petit Estate Agents*

## **CEILIDH - 7.00pm - 11.00pm at the Memorial Hall**

Do come and enjoy our fabulous evening of fun and dancing, with instructions by our wonderful callers Rod and Jac Denley-Jones.

£15 to include food; licensed bar (not BYO)

**Tickets available from Ringrose in Broad Street**

# Sunday 10th May

## **May Fair Service at St George's - 9.30am**

The May Fair King and Queen will be joining us and we invite everyone in the community to come along and give thanks for the Modbury Fair, and the week of fun we will all have had.

Everyone is welcome at this all-age service; please stay to enjoy refreshments afterwards.

## **Modbury History Walk – 1.30pm**

Join Tony Price (and Alfie) for a one-hour (or so) stroll around the centre of town with an insight into its long and fascinating 1,000 year (and more!) history.

Numbers have to be limited, so please email [tp@lordprice.com](mailto:tp@lordprice.com) to book a slot.

**The Modbury May Fair has its own Facebook page:**

**search on FB for Modbury May Fair**

**and join the group for details and updates.**

# Modbury and South Hams Creative Writing Group

The Modbury and South Hams Creative Writing Group meet every month to read and discuss our work.



Below is a submission which one of our members brought to our last meeting. The theme was 'Rhythm'. The piece below is about how music is central to the writer's memories of the past.

We are keen to welcome new members, so if you enjoy creative writing, why not join us. We meet on the first Saturday of the month at the Queen Elizabeth II Pavilion in Modbury at 10.00am.

[www.facebook.com/modburyc creativewritinggroup](http://www.facebook.com/modburyc creativewritinggroup) . Or call 07767 393802.

## Random Memories of Music and Childhood

Our family are not musicians and certainly none of us are singers, and when I say family I do not mean the children we went on to have or the grandchildren or the husbands or wives, some of whom are really good singers. No, I refer to my parents and my brothers and me.

My grandmother had been a pianist and had taught my uncle how to play but had point blank refused to teach my father as it had been so painful to get my uncle to practice that she could not bring herself to teach Dad. He never forgave her and I think he would have been deeply appreciative of the gift if she had. Although who knows, perhaps he would have given up. It is very easy when you never start to say you would have been brilliant. Wasn't it Lady Catherine de Burgh in 'Pride and Prejudice' who said that she would have been the finest piano player in the world if she had ever learnt to play. Isn't that true of all of us!

Yet even though we could not hold a tune between us, we loved music. Very different types of music, especially when we were young, but in the end, it is all music. Both of my parents had a leaning towards the more classical and operatic, and a soft spot for musical cinema and theatre. Dad had a brief dalliance with the teddy boy style in the fifties, but his love of ballroom dancing saved him from going too far down that road. I do have a picture of him in his Edwardian jacket and amazing quiff. He also had a gold tooth which he thought of as the height of fashion. Marrying my mother, a Welsh girl from the valleys, cured him of all such nonsense!

My mother was not a dancer but my father, as I said, loved ballroom dancing and so all three of us were packed off to dancing classes early in the sixties just as the Beatles and the Rolling Stones were coming to prominence. According to my father when we went out as teenagers, those who couldn't do a ballroom dance would be sitting on the sidelines, although even he, eventually, was partial to a good twist and shout.

I have to say I loved learning the distinctive styles from Waltz to Cha Cha Cha and have always regretted not keeping it up over the years. Maybe if I had, I could have been waltzing around the Blackpool Tower ballroom in a dress with a thousand hand sewn sequins. Sadly, it was not to be. My brothers discovered girls and the Rolling Stones so they would no longer partner me. I had discovered the Beatles and Star Trek, so the ballroom was relegated to the past.

To my father, none of this was music. "Lot of noise" he would say, or "Can't understand a word." I hear myself now saying this about some of the music I hear and realise that my father did not die, but lives on in me. Such a shame he did not live long enough to see me loving classical and opera music as much as he did. Although I can't recall the names of every classical piece he played each Sunday, as my mother prepared the roast, certain melodies instantly evoke the scent of roast beef and Yorkshire pudding. That's when I recognise those tunes as ones from those cherished mornings.

Our principal method for listening to music when I was a child was the radio. Sitting on the sideboard in the corner of our lounge, the radio took up a great deal of space. I can well remember my grandmother sitting in her chair, ear almost glued to the radio, listening intently to the cricket every summer, and the Sunday evenings after we had been washed and scrubbed in the hottest bath my father could manage without actually scalding us, sitting eating our tea listening to 'Sing Something Simple' and going to bed with the ringing screams from 'Quatermass and the Pit' or 'The Blob' reverberating in our ears.

The excitement in the early sixties, when the radio was relegated to a has-been when we got our first record player one Christmas, was palpable. My mother openly asked everyone for advice on what to buy, so it was no surprise we were getting it; she also checked if we minded having just one gift that year. Of course, we all said yes. I can't remember now if not having other presents was a disappointment, so it obviously didn't scar us for life.

Luckily for us, my brother had bought my Mum a record. Sadly, no one else had had this forethought so Downtown by Petula Clark played so much over that holiday that even to this day, some 60 years later, I cannot listen to it. Of course, as soon as the shops were open again a family trip to the record store was a must and over the years an assorted collection of records made their way to our house. Dad's best find was an operatic assortment of 78s by the great Caruso. He loved those records, but I have no idea where they are now. We used to take great delight in changing the speed at which they were played. He was never amused.

**Continued overleaf**

## Modbury and South Hams Creative Writing Group (cont.)

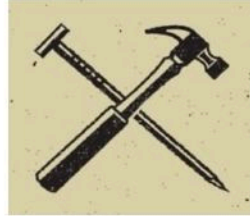
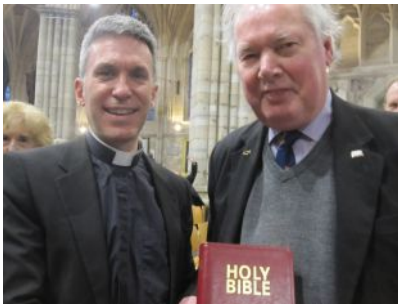
As the years went on music continued to be interwoven into the fabric of our family. Some tone-deaf music teacher even managed to put me into the school choir for one gloriously memorable term. The least said about the solo she got me to sing the better. For our family, I am sure like many others, music continues to conjure up old memories and make new ones as we move forward into the future. New advances in technology give us better and better tools, through which we can appreciate the old as well as the new. But we should perhaps consign the karaoke machine to history.

*Barbara Price*

### NEW DEAN OF WINCHESTER CATHEDRAL

On Sunday 1st March, St David's Day, I was able to represent the Modbury Mission Community at the Exeter Cathedral Choral Evensong to bid farewell to the Canon Treasurer Rev. Chris Palmer who was leaving Devon after 7.5 years to become the Dean of Winchester Cathedral. (Photo shows me presenting a Holy Bible to the new Dean.)

*David Scott*



### Craig Kensett

Highly Experienced Carpenter

Home Improvement  
Custom Carpentry  
CIS Site Construction  
Projects Managed

Happy to discuss all types of work

07500 115177

[craigkensett@btinternet.com](mailto:craigkensett@btinternet.com)

## Need a new website?

**imakewebsites.**

Clear pricing. No jargon.

Local support.

**Call Vicky on 01548 831910**



[www.imakewebsites.co.uk](http://www.imakewebsites.co.uk)

# AUNE VALLEY IN MODBURY

6 Church Street, Modbury



**Free Local Delivery\***

\*Terms & conditions apply.

**10% Off**  
with this advert\*

Bring this with you to receive 10% off in the shop or café. Terms & Conditions Apply

[www.aunevalleymeat.co.uk](http://www.aunevalleymeat.co.uk)



# History Corner

Did you know that one of the most influential women of the 16<sup>th</sup> Century was a Modbury girl? Kat Ashley, whose name might mean more to you as Katherine Champernowne, or even as Nursie from Black Adder!

Kat was born in c.1502, so about the same age as Anne Boleyn, second queen to Henry VIII and, crucially for this tale, who was the mother of Elizabeth, Good Queen Bess.

Kat was probably the daughter of Sir Philip Champernowne, Lord of the Manor of Modbury and a big cheese in Tudor England. To be fair, we can't be certain and she might have been the daughter of Sir John Champernowne, or even some other Champernowne entirely, but we'll go with Sir Phillip as that really is the most likely, especially as he was the best placed at court.

In 1536 Katherine Champernowne, on the recommendation of Thomas Cromwell, was made gentlewoman-in-waiting to the baby Princess Elizabeth, daughter of Henry VIII's queen number two, Anne Boleyn. After the birth of Prince Edward to the next queen along, Jane Seymour, Kat became little Bess' governess. Sources state that she accustomed the little girl to the "elaborate code of politeness and respect to her elders".



Kat's warmth and affection for Elizabeth surpassed that normally expected from governesses as she created a strong bond with her young charge which would last a lifetime, possible even the mother that Elizabeth never had. In addition, she taught her charge pursuits such as needlework, embroidery, dancing, and riding. Evidently, Katherine had been unusually well educated for she schooled the precocious princess in mathematics, geography, astronomy, history, French, Italian, Flemish, and Spanish. Elizabeth herself praised Katherine's early devotion to her studies by stating that Kat took "great labour and pain in bringing of me up in learning and honesty".

In 1545, Kat married John Ashley, Elizabeth's senior gentleman attendant and Anne Boleyn's cousin. When Henry died in 1547, the new King Edward VI's uncles, Edward and Thomas Seymour, jockeyed to take control, Thomas married royal widow Catherine Parr and they took in Elizabeth to their new house in Chelsea along with Kat as her "Chief Gentlewoman".

Then it got tricky: Thomas Seymour started flirting with the teenage princess and hung around her bedroom acting most improperly, so Elizabeth and her household escaped to Hatfield House. When Catherine Parr died in childbirth, in September 1548, Thomas renewed his attentions with intent to marry Elizabeth, but his political machinations led to his downfall. Kat was arrested and taken to the Tower, but was found to have been true to her mistress and was released just before Thomas was executed.

With Mary on the throne, she tried to separate Kat from Elizabeth and even had her in Fleet Prison for three months, but she stuck by her mistress and when Elizabeth became Queen, Kat was appointed First Lady of the Bedchamber, the most prestigious position in the royal household and a crucially influential advisor and gatekeeper, with access to the monarch day and night.

Kat Ashley died on the 18th of July 1565, aged about 63, sending the Queen into a period of inconsolable grief. Kat's life, spent at the side of Elizabeth I, is a testament to loyalty, devotion and the unbreakable friendship and love that these two women shared.

**Tony Price**

---

For those interested in the history of Modbury, There will be a talk about "Modbury's Civil War" by Philip Photiou on May 21st, 2026, at Wembury Village Hall. Further details in next month's Modbury Messenger.

# FLINT GARDENING SERVICES

*Local, friendly, professional.*

Tom Flint, RHS qualified gardener, has recently moved to Modbury.

Tom offers practical, hands-on advice backed by insurance and years of experience.

With a team of hardworking, knowledgeable gardeners on hand to help, Tom is delighted to offer Modbury residents:

- Weeding
- Pruning
- Hedgecutting and laying
- Lawncare and maintenance
- Chainsaw/tree work (NPTC insured and qualified)

Please call Tom for a friendly, no obligation chat.  
0785 232 6786 email [tpcf.flint@btinternet.com](mailto:tpcf.flint@btinternet.com)

**MODBURY MAY FAIR ROAD CLOSURES ROAD TRAFFIC REGULATION ACT 1984,  
SECTION 16A THE COUNTY OF DEVON TEMPORARY PROHIBITION OF THROUGH TRAFFIC**

No person shall cause or permit any vehicle to proceed on the sections of Affected Roads except for access to land or premises on or adjacent to those length of roads.

NOTICE is hereby given that Devon County Council has been approached to make the above titled order live as per the dates below. It is planned that this will be invoked as follows:

**Monday 4<sup>th</sup> May 14:00h - 15:00h**

Town Centre (Palm Cross Green - Galpin St), Brownston Street, Dark Lane, Barracks Road closed to all traffic -  
Modbury Mile Fun Run Road Races 14:00h -15:00h

**Saturday 9<sup>th</sup> May 07:00h - 14:30h**

Poundwell Street Closed 07:00h – 14:30h From Post Office – Bottom of Short stay car park.  
Access to Poundwell from 07:00h on Saturday via Church Lane & Bunker Hill only

**Saturday 9<sup>th</sup> May 15:00h – 17:00h Carnival Parade**

A379 Town Centre (Palm Cross Green - Galpin St) 16:00h -16:30h Brownston Street, 16:00h – 17:00h, Dark Lane,  
16:00h – 17:00h, Barracks Road 15:00h – 16:30h

**CAR PARK CLOSURES**

APPLICATION HAS BEEN MADE TO SOUTH HAMS DISTRICT COUNCIL TO CLOSE THE CAR PARKS AS FOLLOWS: -

**Monday 4<sup>th</sup> May 2024**

Poundwell Lower Long Stay Car Park closed for May Fair Opening Ceremony closed from 06:00h  
on 4<sup>th</sup> May until 1400h

**Friday 8<sup>th</sup> May - Saturday 9<sup>th</sup> 2024**

Poundwell Short Stay Car Park closed for May Fair Market from 18:00h on 8<sup>th</sup> May until 15:00h on 9<sup>th</sup> May



Visit us at our dedicated Wellness Sanctuary

**Blissful Yoga.  
Workshops & Events.  
Coffee & Shopping.**

WellnessWarriorsYogaStudio.co.uk

Modbury High Street, 2C Broad Street, Modbury PL21 0PS  
Saturdays at Bigbury Beach from April – September



**KILN DRIED LOGS  
SMOKELESS FUELS  
ECO BRIQUETTES  
KINDLING & FIRELIGHTERS  
CALOR GAS STOCKIST**

**PARKLAND 01548 852723  
SORLEY GREEN 07968 222008  
KINGSBRIDGE  
DEVON  
TQ7 4AF info@winterfuelstore.co.uk  
www.winterfuelstore.co.uk**



## Shop at the Top Revamp

On Saturday 14 February, St Valentine Day, I, as Modbury Town Crier, was able to do the formal reopening of the revamped Shop at the Top, after refurbishment following last August's floods.

OYEZ OYEZ OYEZ

There is a reopening of a well established shop here in Modbury Town, which had to move after some devastating floods in August 2025 and this is having an official reopening today at 10:30am, 11-12 Broad Street.

Come and support Mandy and this new chapter for The Shop at the Top.

Clothing Connoisseurs, Cushion Cuddlers, Fashion Fanciers, Footwear Fiends, Furniture Fanciers, Homeware Holders, Interior Idealists, Lighting Lovers, my Lords, Ladies and Gentlemen. Today the well-known business at The Shop at the Top is having its official reopening here in Broad Street, in Modbury Town on this 14<sup>th</sup> day in the 2<sup>nd</sup> month of February in the year MMXXVI, 2026! – St Valentine's Day!

Mandy is reopening her revamped shop after its makeover. We certainly do all wish Mandy every success as she reopens The Shop at the Top. Let's have a countdown for the formal reopening 5-4-3-2-1.



OYEZ OYEZ OYEZ.

God save the King

**David Scott**

8 - 11<sup>th</sup> APRIL 2026

**Jerusalem**

by JEZ BUTTERWORTH

"The greatest British play of the century" The Telegraph

**MOTHECOMBE GARDENS**

wildwill.co.uk

**WILD WILL**  
THEATRECOMPANY

5 Star performance

An amateur production by arrangement with Nick Hern Books. Directed by Rob Heyland.

## Stanborough Chorus

40<sup>th</sup> Anniversary Season

**HAYDN – MARIA THERESA MASS**

and

**BERNSTEIN – CHICHESTER PSALMS**

Saturday 18<sup>th</sup> April @ 7:30pm, St George's Church Modbury

Conductor Trefor Farrow

ORCHESTRA LEADER – KARIN LEISHMAN

SOPRANO – HELEN HAVILAND

ALTO – REBECCA SQUIRE

TENOR – MARK HOUNSELL

BASS – JOHN HOBBS

COUNTER-TENOR – OLIVER DONEY

HARP – ELIZABETH JANE BALDRY

Tickets £18/ under-18s free: available from all choir members;

Kingsbridge Information Centre, Modbury Post Office

and online: stanboroughchorus.com



**A.F. Brown**  
 & Sons Ltd  
*Landscaping and General Building*

**Including:**

**Stone Walling • Retaining Walls • Groundworks  
 Drainage & Irrigation • Driveways  
 Patios & Paths • Gates • Fencing & Decking etc**

Family Business Since 1976  
 Company No.3942610

**Competitive Quotes Given, Full Insurance**

Gatcombe Mill - Littlehempston - Totnes - TQ9 6LW

**Office:** Tel- 01803 864 871  
**Email:** enquiries@afbrown-sons.co.uk  
**Web:** www.afbrown-sons.co.uk

**Fitness studio & 24/7 Gym**

**BOMBERS**  
 PHYSICAL TRAINING

Unit A  
 Pearse Gardens  
 Modbury  
 PL21 0FX

Over 100 5 star reviews

Contact us to book  
 your 'No Sweat Intro'

www.bomberspt.co.uk gym@bomberspt.co.uk

**Sarah Wyatt**  
 Independent Civil Celebrant

Weddings, Namings, Vow Renewals,  
 Funerals – Celebration of Life

MAKING MEMORIES WITH BEAUTIFUL CEREMONIES

Tel: 07794662903 Email: circlecelebrantsarah@gmail.com  
 www.circlecelebrancy.co.uk

**Carers Direct (SW) Ltd**  
 Bringing Care To Your Home

**Do you or a loved one need a little extra help?**

**WE ARE HERE TO HELP**

Carers Direct SW Ltd is local not-for-profit care team of dedicated, well trained, friendly, local carers.

We can provide from one hour to 24-hour care.

Tasks undertaken include personal care, meal preparation, prompting medication, appointments and social outings.

Contact us for more information on:  
 01548 854358 or Email. [office@carersdirect-sw.co.uk](mailto:office@carersdirect-sw.co.uk)

You are welcome to pop in and see us at our office:  
 Unit 2N South Hams Business Park, Churchstow,  
 Kingsbridge, Devon TQ7 3QH

**CARERS DIRECT (SW) Ltd**

**Est. independent LOCAL ELECTRICIAN**

**Honest and reliable service**

**LightWorks**  
 Domestic Electrician

- Complete rewires and new builds
- New 18th edition Consumer Units/Garage Units
- Landlords & Insurance Certificates
- Domestic electrical fault finding
- Specialising in garden, kitchen and floor lighting from planning to certification

All work guaranteed/certificated  
 Fully insured, qualified & registered with NICEIC

Call Phil for a free, no obligation quote or callout  
**Tel: 07769 840012**  
 Email: [lightworks.electrics@gmail.com](mailto:lightworks.electrics@gmail.com)

# Rossini: Petite Messe Solennelle

Saturday 25th April at 7:00pm, St George's Church, Modbury

Brent Singers: Matthew Searles *director*  
 Rebecca Hardwick *soprano*  
 Michael Graham *tenor*

Ben Horden *piano*  
 Sophie-Dominique Waddie *alto*  
 Julian Rippon *bass*

Edward Dean *harmonium*

Bursting with all the drama of the theatrical stage, Rossini's *Petite Messe solennelle* is where church meets opera house, transporting us into the lavishly decorated salons of nineteenth century Paris. Rossini's career largely took him to the opera house, and this, the last of his serious works – from the collection *Péchés de vieillesse* (Sins of old age) – was intended to serve as something as a passport to what lies beyond earthly life. Despite setting the rather serious text of the Ordinary of the Mass, Rossini remains theatrical to the end and the work comprises extraordinary musical variety, from the desolation of the 'Crucifixus' to the ecstasy of the 'Et resurrexit' with amorous duets, mischievous trios, and thrilling fugues between.

Tickets £15, under-12s free Tickets are available to purchase from [brentsingers.org.uk](http://brentsingers.org.uk)

Megan Courtman



**SATURDAY 25  
 APRIL 2026, 7PM**  
**ST GEORGE'S CHURCH  
 MODBURY**

TICKETS £15  
 UNDER 12S FREE  
 AVAILABLE FROM  
[WWW.BRENTSINGERS.ORG.UK](http://WWW.BRENTSINGERS.ORG.UK)

Gioachino  
*Rossini*  
**PETITE MESSE  
 SOLENNELLE**

**BRENT SINGERS**  
 MATTHEW SEARLES CONDUCTOR

SOPRANO REBECCA HARDWICK  
 ALTO SOPHIE-DOMINIQUE WADDIE  
 TENOR MICHAEL GRAHAM  
 BASS JULIAN RIPPON

PIANO BEN HORDEN  
 HARMONIUM EDWARD DEAN

BRENT SINGERS IS A REGISTERED CHARITY NO. 1164901



**HELP BEAT POVERTY VOLUNTEER HERE**

**MAKE A REAL IMPACT EVERY SINGLE SHIFT**

**JOIN YOUR LOCAL FRIENDLY SHOP TEAM**

**CHANGE**

**BE PART OF SOMETHING BIGGER BE PART OF KINGSBRIDGE OXFAMILY**

**For more details pop into the Kingsbridge shop or visit [oxfam.org.uk/join-the-team](http://oxfam.org.uk/join-the-team)**

## ALL SAINTS CHURCH HOLBETON WOODCARVINGS

### Their History and Meaning



Come and see J D Sedding's superb 19<sup>th</sup> century Arts and Crafts woodcarvings including ones you will not have seen in detail. There are dragons and demons, flora and fauna. Discover their history and symbolism with **3 illustrated talks starting at 10am in Holbeton Village Hall on Friday 17th April**. See them in detail, portrayed on the large screen. Learn about their history and symbolism.

If you wish to have lunch at the Mildmay Colours Inn, we suggest that you book in advance (01752 830555). Or bring your own picnic to eat in the church.



In the afternoon, come and discover the carvings first hand. We will have a few torches and binoculars to help, or bring your own.

**Tickets available through Eventbrite at £12.50 per person.** The proceeds will go towards the church's restoration.

Harry Baumer

## ADDITIONAL FLAGS IN FEBRUARY AND MARCH

Observers may have noticed that there were additional flag hoists in both February and March and this was because the Modbury Chief Yeoman almost forgot to promulgate the start and ending of the Winter Olympic and Disability games which took place in Milan and Cortina, Italy.

David Scott



## INTENDED MONTHLY FLAG HOIST AT PALM CROSS GREEN - March

Date	Masthead	Starboard Yard (Plymouth) - West	Port Yard (Modbury) - East	Event
01	RAF Ensign	FOUND	1918	RAF founded 1918
02	White Ensign	COPNHG	1801 <sup>st</sup> sub	Battle of Copenhagen 1801
03	Union Flag	Falklands Flag	Ans1982	Start of the Falklands War 1982
04	NATO Flag	FOUND	1942 <sup>nd</sup> sub	NATO founded 1949
05	Army	KOHIMA	Ans1943 <sup>rd</sup> sub	Start of the Kohima Battle 1944
06	Union Flag	BOSNIA	Ans193 <sup>rd</sup> sub2	Start of the Bosnian War 1992
22	Plymouth Flag	BLITZ	Ans1942 <sup>nd</sup> sub	Start of Plymouth Blitz 1941
23	England Flag	St George Cross	GEORGE	England Patron Saint
24	Exeter Flag	BLITZ	Ans1942	Start of Exeter Blitz 1942
25	Poppy	ANZ1 <sup>st</sup> subC	Ans192 <sup>nd</sup> sub5	ANZAC Day 1915
28	UK/USA	OPTIGR	1943 <sup>rd</sup> sub	Operation Tiger (Slapton) 1944



Expert care. In the comfort of home.

See how our Live-in Care services can help your loved ones stay in the place they feel best.

Call us for a friendly chat on

**01752 347 700**



It's good to be home

Or visit  
plymouth@bluebirdcare.co.uk



Please come and try our new milk and milkshake vending machines at Bigbury on Sea

3 sizes of glass bottles available

Fresh milk and hand crafted ice cream from our organic cows

Open 24/7 - Please call in

Milk - Ice Cream - Eggs - Vegetables - Meat

Straight from the farm @mountfollyfarm



# MODBURY MESSENGER

## COMMERCIAL ADVERTISING RATES MODBURY MESSENGER 2026

SIZE	Size - can be portrait or landscape	1 month (per insertion)	3-11 months (per insertion)	12 months (per insertion)	12 months (Year total)
1/8 page	45mm x 65mm	£30	£26	£16	£192
1/4 page	90mm x 130mm	£60	£50	£30	£360
1/2 page	130mm x 180mm	£108	£86	£50	£600
1 page	180mm x 250mm	£192	£148	£80	£960

The Modbury Messenger is an all colour publication, no preferential rates for black & white advertisements.

To advertise in the Modbury Messenger, contact the Editor, Lynne Barnes, via email on [modburymessengercic@gmail.com](mailto:modburymessengercic@gmail.com) with details of the size of the advert and how many months you wish to advertise for.

### Modbury Messenger May 2026

The copy date for the May 2026 Modbury Messenger is **10th April**. Please email all articles, notices of events and paid advertisements to [modburymessengercic@gmail.com](mailto:modburymessengercic@gmail.com).

The Modbury Messenger is published by Modbury Messenger CIC and is printed by ESP Print. The views expressed in the Messenger do not necessarily represent those of Modbury Messenger CIC.

The Editorial Committee reserve the right to précis/abbreviate any copy submitted for inclusion in the Modbury Messenger. Their decision is final. The contents of the Modbury Messenger may not be reproduced in any form without the prior written permission of Modbury Messenger CIC. Guidance for submitting material is available online at <http://modburymessengercic.co.uk/about.html>

**Persons submitting entries with art or photographs not drawn or taken by themselves must confirm they have obtained copyright permission, or agree to pay any copyright fine which is subsequently raised**

[modburymessengercic@gmail.com](mailto:modburymessengercic@gmail.com)

### MODBURY MESSENGER CIC

Modbury Messenger CIC is a Community Interest Company and as such is registered by the Registrar of Companies for England & Wales, Northern Ireland or Scotland. A Community Interest Company is a special type of not-for-profit limited company which exists to benefit the community. The purpose of Modbury Messenger CIC is to disseminate information about events, notices and articles of interest to the people of Modbury and it does this by publishing the Modbury Messenger, a printed newsletter, every month with 1000 copies delivered to homes and businesses within the Parish of Modbury. An online copy of the Modbury Messenger is available to neighbouring communities, advertised via social media and on our website [modburymessengercic.co.uk](http://modburymessengercic.co.uk).

Advertisers are charged a fee for advertising in the Modbury Messenger and this covers the cost of producing the Modbury Messenger. The Board of Directors, Company Secretary, Editor, Proofreaders and Distributors are all volunteers.

**Directors of Modbury Messenger CIC:** Diana Lynne Barnes & Bernard Taylor.

**Company Secretary:** George Rosevear FCIS.

**Editorial Committee:** John Bower, Lynne Barnes, Ira Young.

Modbury Messenger CIC has produced the Modbury Messenger as an independent CIC since September 2018. Previously, it was published by Modbury Parish Council.

# THE FLOOR SHOW



Your Local South Hams  
**Carpet & Vinyl Flooring Experts**

7 Church Street, Modbury,  
Devon. PL21 0QW

**01548 830909**

[thefloorshowmodbury@gmail.com](mailto:thefloorshowmodbury@gmail.com)

[www.thefloorshowmodbury.co.uk](http://www.thefloorshowmodbury.co.uk)

## GREENLANDS NURSERY

Higher Wizaller, Modbury, PL21 OSE



Shrubs and Perennials

Godwins Professional

Peat Free Compost

Planted hanging baskets

Holly wreaths at £10 & £12 each

Deliveries can be arranged

**Local family run business excellent value**

Tel: 01548 550491 or 07534 611587

Email [brendagreenlandsmodbury@yahoo.com](mailto:brendagreenlandsmodbury@yahoo.com)

We also have a good selection of marble based garden ornaments



- Bathroom and kitchen fitting
- Floor and wall tiling
- Leaking toilets/radiators/taps etc
- Radiator replacement and additions
- Shower pumps
- Links with local builder/electrician for larger installations if required

## Chapman & Sons Plumbing Service



Small jobs welcome  
Reasonable rates  
Free quotes

Telephone 07468 466380 now  
for a speedy and efficient service.



**MARCHANT PETIT**

COASTAL, TOWN & COUNTRY

For customers who expect more  
from their estate agents.

Our Modbury team, led by Helen Harris and Debbie Cole,  
has a wealth of South Devon Estate Agency experience,  
covering the coast and countryside.

Whether you're looking to buy or sell, contact our  
friendly and knowledgeable team today.

**SALES | LETTINGS | AUCTIONS**

01548 831163 | [modbury@marchandpetit.co.uk](mailto:modbury@marchandpetit.co.uk)

4 Broad St, Modbury, Ivybridge PL21 0PS

[www.marchandpetit.co.uk](http://www.marchandpetit.co.uk)



HELEN MOORE  
PROPERTY

POWERED BY  
**exp** UK

Independent Estate Agents

Over 100 years combined  
experience

Local. Approachable. Honest.

 01752 962162



MODBURY  
DENTAL PRACTICE

## OUR SERVICES

- Cosmetic Dentistry
- Root Canal Treatment
- Dental Implants
- Extractions
- Restorative Dentistry
- Dentures
- Hygiene Services
- Tooth Whitening
- Orthodontic Aligners
- Facial Aesthetics
- Same Day Emergencies
- Membership Plans

## MODBURY DENTAL PRACTICE

*Tailored dental treatments for the entire family*

### Practice Plans

Our plans allow you to spread the cost of your dental exams and hygienist visits into monthly payments.

### Finance Options

We offer a 0% APR finance so you can spread the cost of your dental treatments in affordable payments.

## NEW PATIENTS WELCOME

4 Broad St, Modbury, Ivybridge PL21 0PS

Tel no: 01548 830811

Mon-Fri | Private appointments only

[www.modburydentalpractice.com](http://www.modburydentalpractice.com)